

# The Benefits of Transforming your IT event management into Autonomous Operations with HPE Ops Bridge

January 31, 2017

Today's Speaker:



**Harald Burose**  
Product Manager  
SW Hewlett Packard Enterprise



**Hewlett Packard  
Enterprise**



v i v i t

YOUR INDEPENDENT SOFTWARE USER COMMUNITY

**The webinar will begin shortly.**

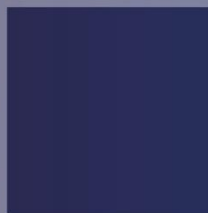
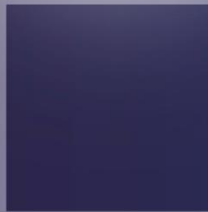


vivit

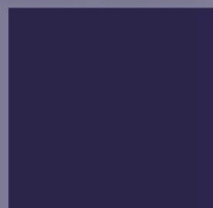
Discover the independent HPE software user community where you can **share, collaborate, exchange, and grow**



COMMUNITY



**The Benefits of Transforming your IT event into Autonomous Operations Management with HPE Ops Bridge**



# Welcome Members

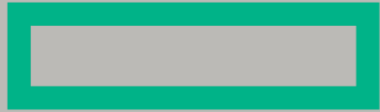
Vivit and HPE welcome you to our Post Discover Summit 2017



<http://www.vivit-worldwide.org/default.asp?page=LondonSummit2017>



**Brought to You By**



# **Hewlett Packard Enterprise**

YOUR INDEPENDENT HPE SOFTWARE USER COMMUNITY



# Hosted By



**Rocky Pisto**  
VP of Sales  
PCi  
LUG and SIG Leader

YOUR INDEPENDENT HPE SOFTWARE USER COMMUNITY



# Today's Speaker



**Harald Burose**  
Product Manager  
SW Hewlett Packard Enterprise

YOUR INDEPENDENT HPE SOFTWARE USER COMMUNITY



# Webinar Housekeeping



A screenshot of a webinar interface. The main presentation pane shows a slide titled "Building the DevOps Tool Chain" dated "January 17, 2017". The slide features the Vivit logo and the text "Discover the independent HPE software user community where you can share, collaborate, exchange, and grow". The slide is divided into sections for "ADVOCACY", "COMMUNITY", and "EDUCATION". On the left, there are three side panels: "LOGO/PICTURE" with the Vivit logo, "Q&amp;A" with a text input field and an "Ask" button, and "DOWNLOAD FILES" with a table showing "No file Found". At the bottom of the interface, there is a status bar with the text: "Dial-In #: VoIP or 415-926-7795 or International Numbers Conference ID: 0866-2702 User ID: 280895".

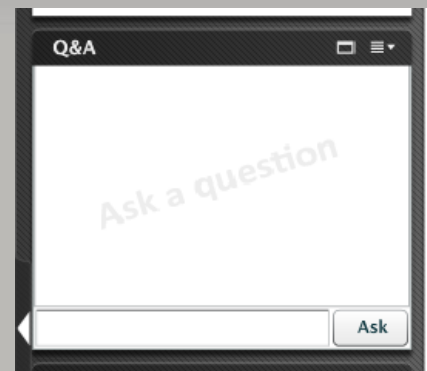
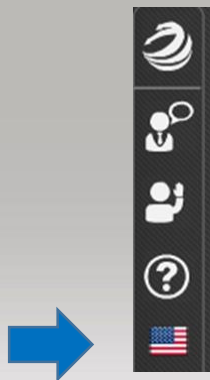
- This “LIVE” session is being recorded
- Recordings are available to all Vivit members
- To enlarge the presentation screen, click on the rectangle in the upper right hand corner of the Presentation pane

YOUR INDEPENDENT HPE SOFTWARE USER COMMUNITY



# Webinar Control Panel

- Session Q&A:  
Please type questions in the Q&A pane and click on “Ask”
- Choose the language in which you would like to ask your questions





# IT must empower the business to move faster

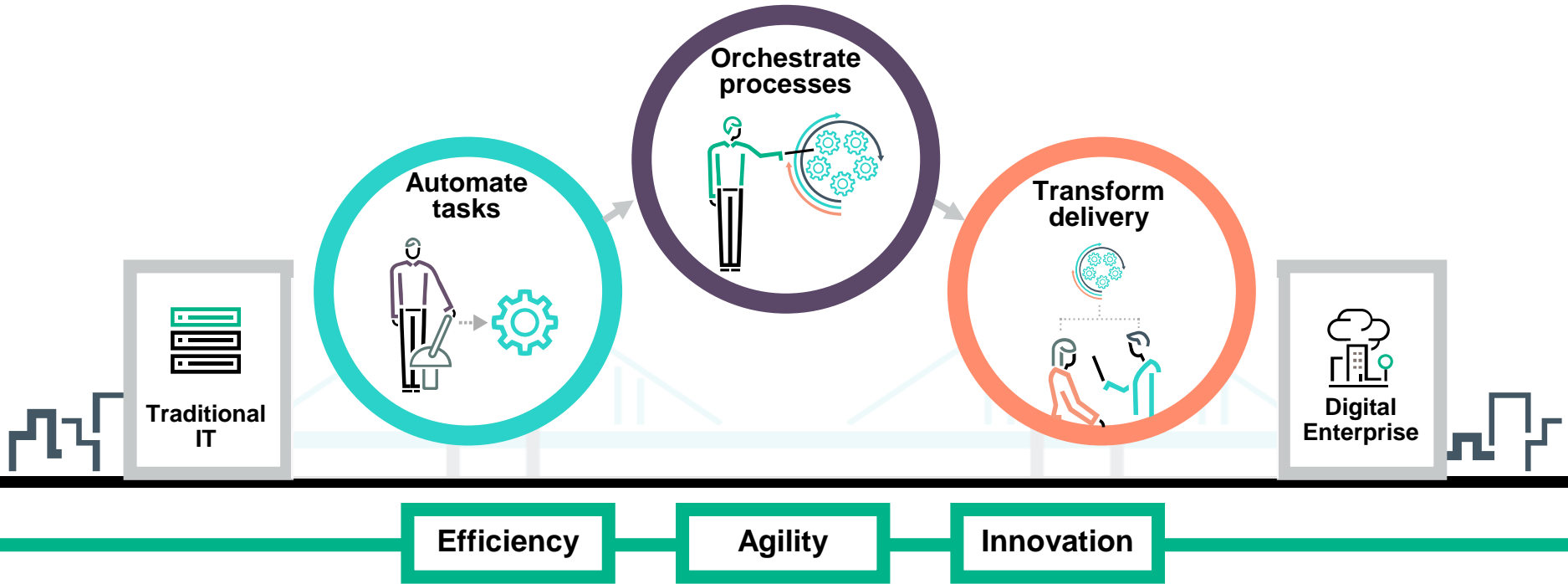


Realize  
**efficiency**

Drive  
**agility**

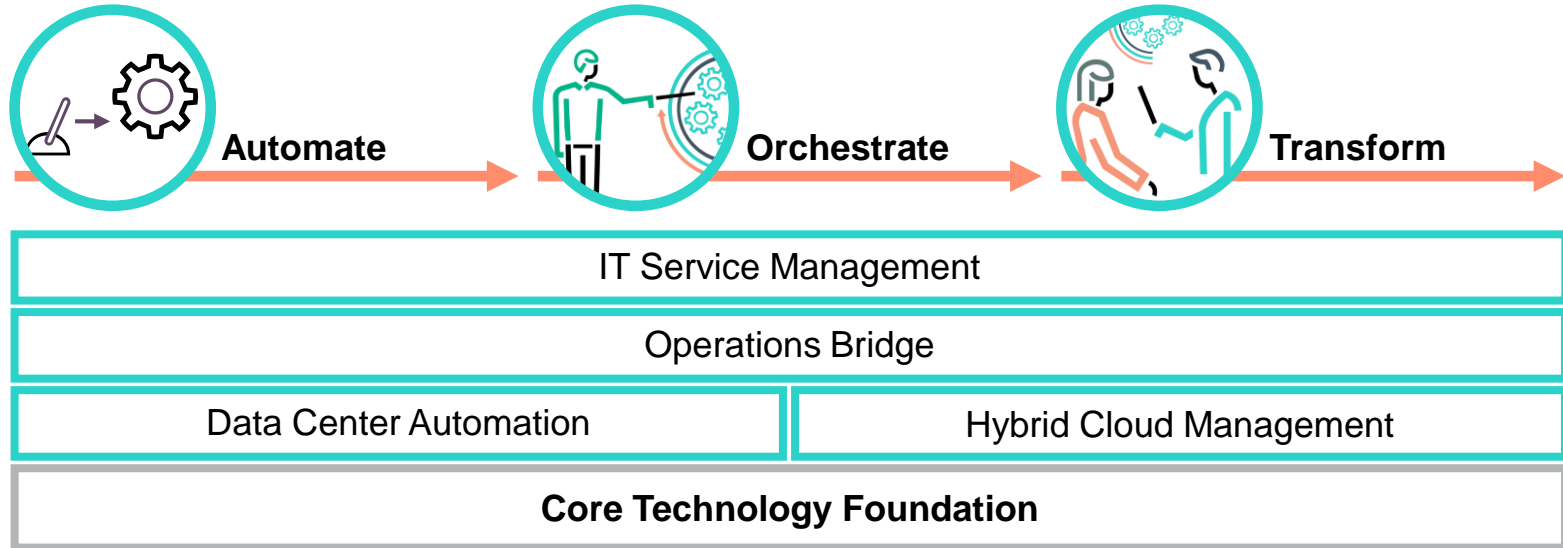
Accelerate  
**innovation**

# Key outcomes enabled by IT Operations



# IT Operations Management

Simplified to accelerate innovation



# Agenda



- Industry trends
- HPE's Solution
- Product news
- Demo

# Outside forces are disrupting businesses and government

## The idea economy

Turning ideas into new products or services has never been easier



## New, disruptive business models

No business, industry or government is safe



## Internet of Things, explosion of devices

Cloud is redefining how applications and devices are connecting & providing new value



# Inside forces are pushing you to evolve IT



**Technology** is  
business strategy



**DevOps** driving  
culture shifts



**Expanding IT**  
expectations rapidly

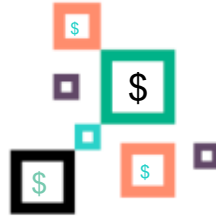


**Shadow IT** is  
everywhere

# Yet problems remains identical



**Ensure**  
business  
Continuity



**Optimize** cost  
of delivery



**Accelerate**  
delivery

# HPE Operations Bridge

Operations through a business lens



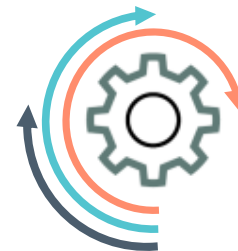
Provide Real time biz  
insight into IT



Consolidate all data in  
a central place



Use Machine Learning  
and Big Data



Autonomous  
Adoption via automation



# Operations Bridge Suite

Visualize from NOC to board

## Simple and colorful

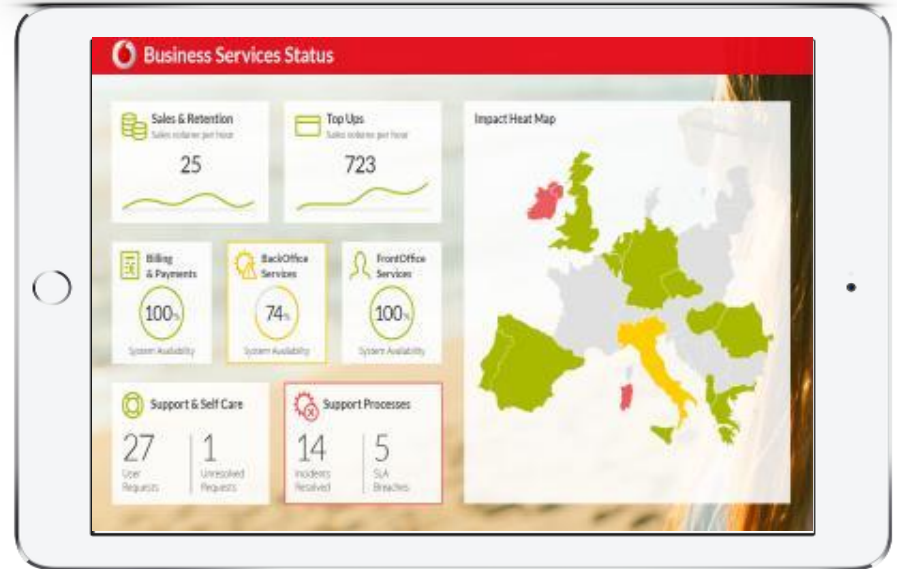
Design using standard office tools  
And Plugin your own graphics

## Flexible and secure

Show status, metrics, RSS, and  
video streams, built-in robust security

## Anywhere, anytime, any device

Access information in real time  
from popular browsers on any device



# Operations Bridge Suite

Central monitoring solution

## Single pane of glass

Sense the state of your IT Environment from Metal to App

## Dynamic models

Visualize event impact in the context of Application and infrastructure run-time models

## Automate resolution

Take actions on events, automate routine workflows centrally



## Performance mgmt.

Unified cloud scale performance with real time visibility

## Event correlation

event reduction to focus on the right issues using multiple Correlation techniques

## Integrations

Extensive integrations with 3<sup>rd</sup> party monitoring and service mgmt. solutions

# OpsBridge Suite

Built on Big Data paradigms



## Optimize

Big data capacity planning and optimization with advanced what-if modeling



## Report

Big data model driven reporting and forecasting with more than 250+ Out of box reports



## Sense

Out of box big data sensors, agents, connectors and integrations to provide real time insight into your hybrid IT infrastructure



## Analyze

Big data analytics leveraging multiple data types for troubleshooting, search, prediction, anomaly detection and alerting



# OpsBridge Suite

Adapt environment and your monitoring

## Automatic discovery

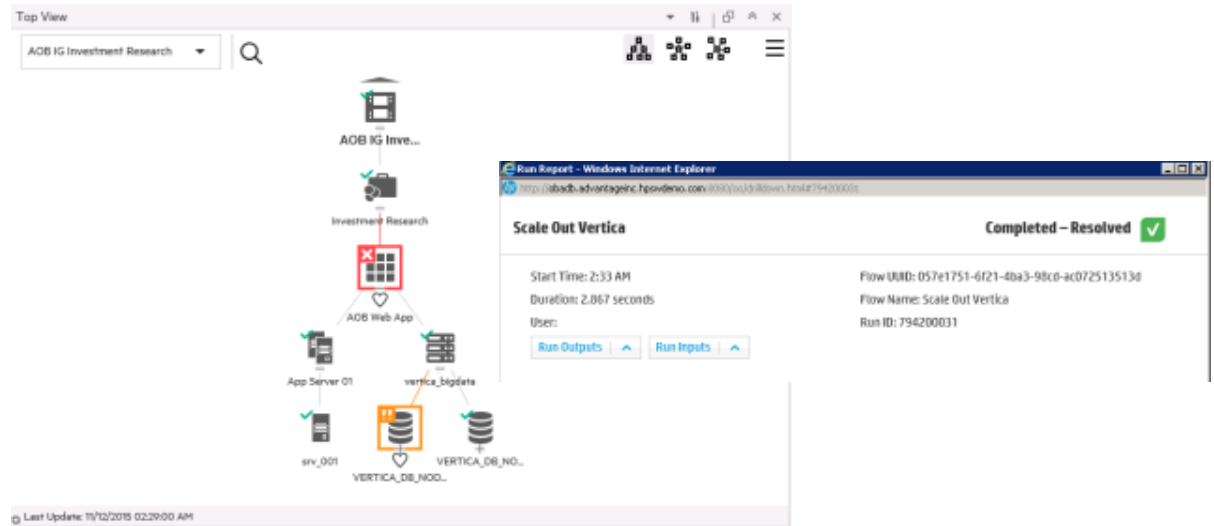
Gain a real time understanding of application service models

## Automatic monitoring

Adjust monitoring and sensing policies based on your changing environment

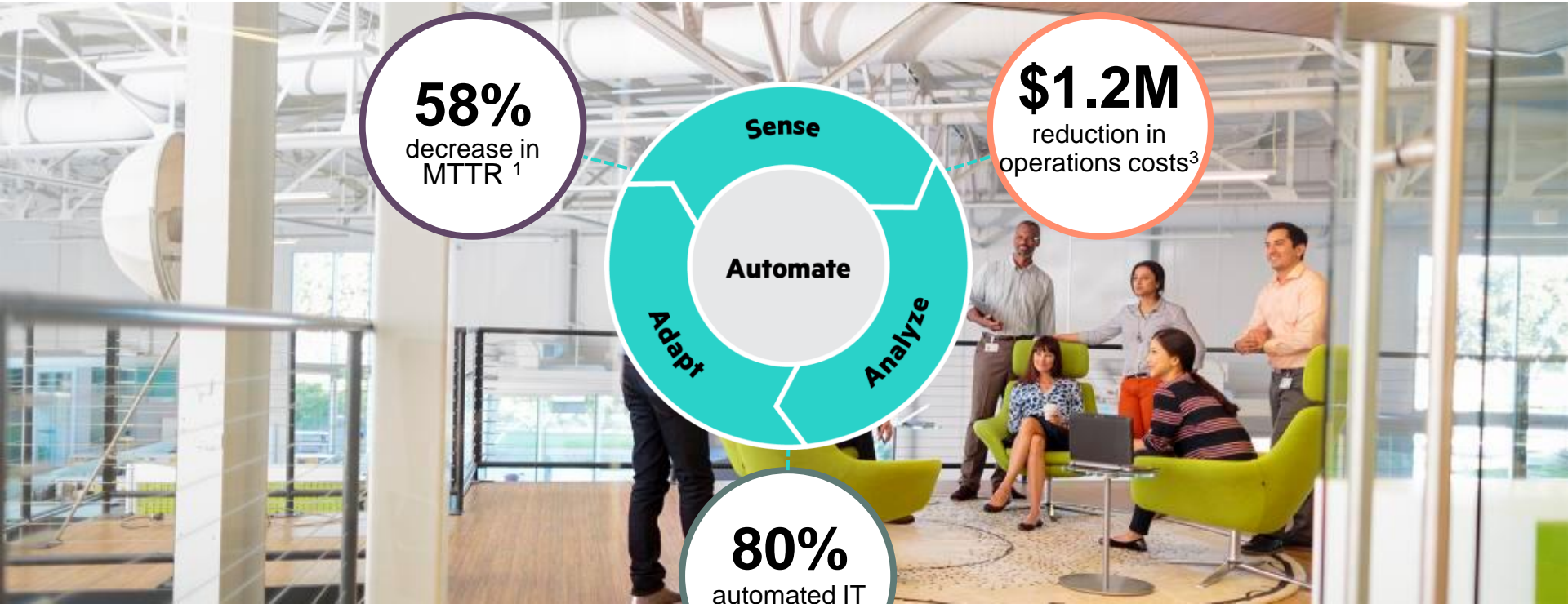
## Automatic remediation

Drive automated remediation actions to aim for a total lights out operations



# HPE Operations Bridge Suite

Customer measured benefits



**58%**  
decrease in  
MTTR<sup>1</sup>

**\$1.2M**  
reduction in  
operations costs<sup>3</sup>

**Automate**

**Adapt**

**Analyze**

**80%**  
automated IT  
processes<sup>2</sup>

# What's new



# Autonomous Operations through a business lens

Who is really in control



## On-board artificial intelligence

Intelligent driver assistance  
Preventive crash assistance  
Incidence avoidance

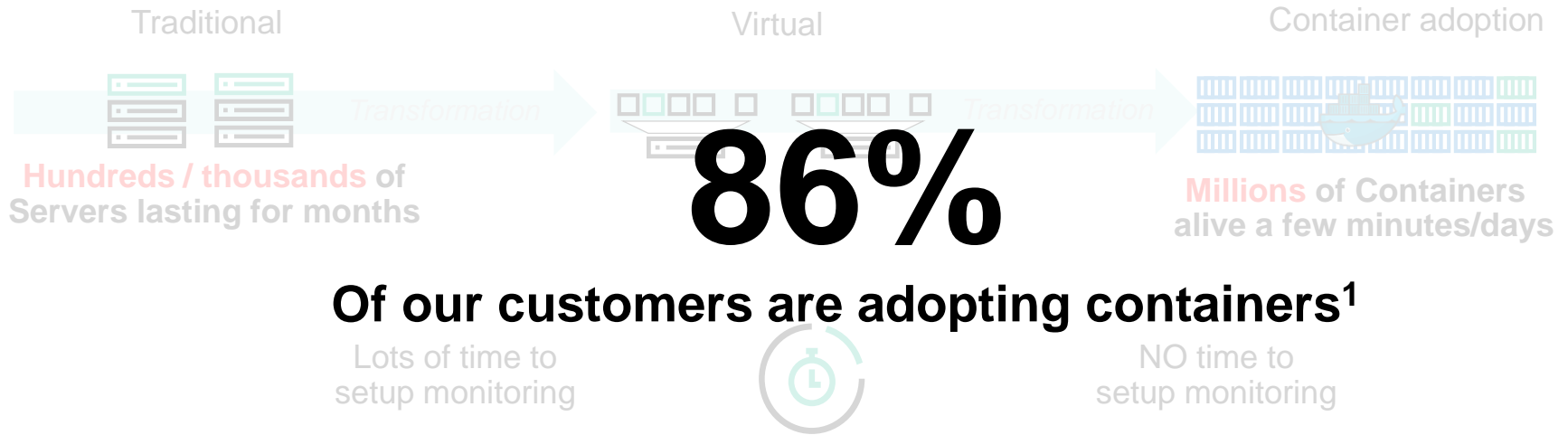
## Sense

Analyze

Adapt

# What's new with Operations Bridge – The container story

Business risk increased through lack of monitored infrastructure

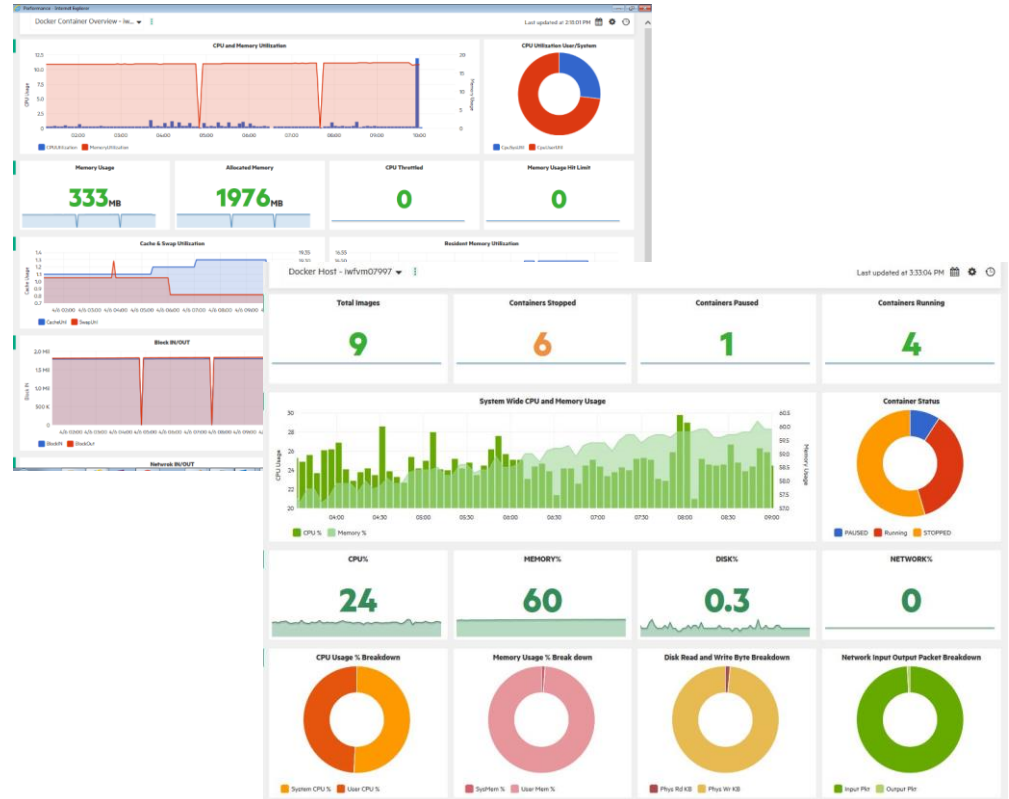


**Of our customers are adopting containers<sup>1</sup>**



# Docker Monitoring with OMi Management Pack

- Automated discovery and monitoring of the docker containers including hosts and clusters
- Monitor the container, host and workload performance/availability KPIs & log entries
- Visualize the performance of the Docker container, host and clusters in state of art dashboard
- Automated discovery and monitoring of key apps / container
- Calculated overall uptime and performance of compute instances over time



# Cloud Monitoring with Operations Bridge

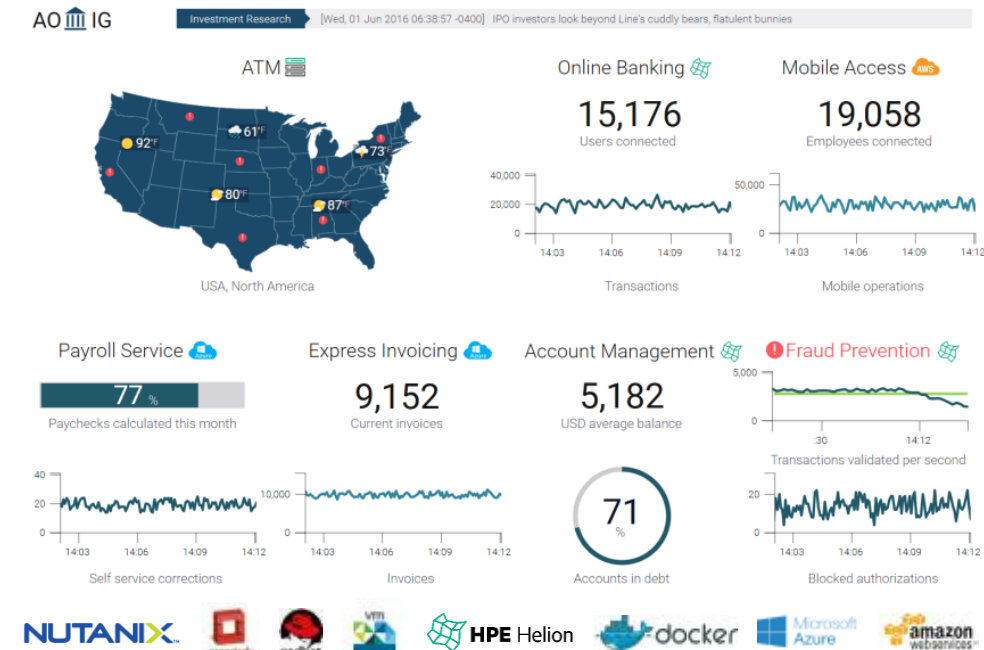
Single view from metal to cloud workloads

Automate monitoring<sup>1</sup>,  
discovery and remediation<sup>2</sup>

Coverage from hyperconverged  
infrastructure to public cloud

Metal to App visibility for your  
container infrastructure<sup>3</sup>

Ops Bridge available on Docker  
and AWS Market place with BYOL



- 1) Drive Monitoring parameters from std cloud provisioning platforms
- 2) Built in actions for std cloud stacks (Azure, Docker, ...)
- 3) Mongo DB & SQL Lite in Container discovery



# Autonomous Analytics to drive the Operations Bridge

Zero configuration anomaly detection for your business service



## Detect Anomaly

Automatically detects anomalies across logs, events & metrics

Anomaly event in OpsB mapped to service



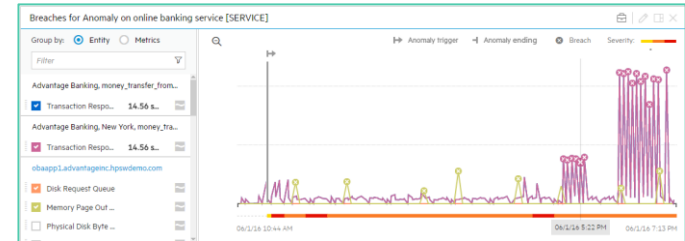
Detect



## Investigate Anomaly

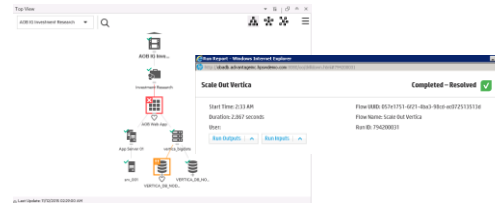
Anomaly inspection directly opened from the anomaly event in OpsBridge

Investigate



## Prevent issue via automation

OpsB Automation used to drive prevent issue



Prevent

# Smart Search with Operations Bridge Analytics 3.0

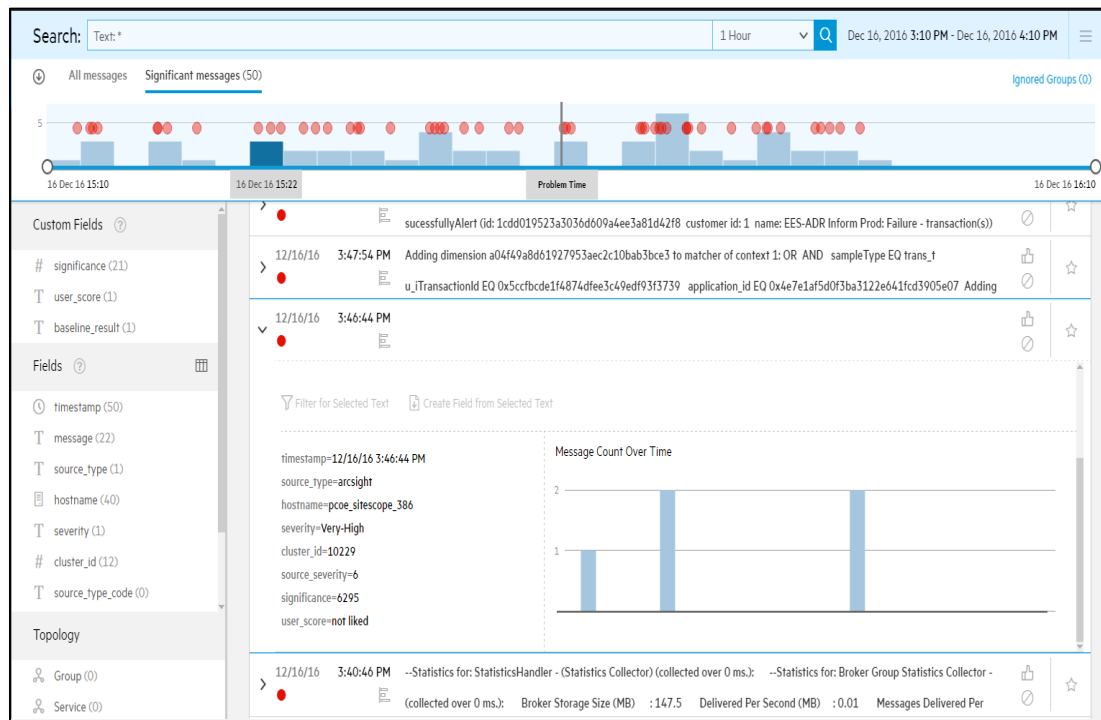
## Combine Search with power of machine learning

### Search across all data

Easy-to-use interactive search operators and dynamic statistics

### Integrated Analytics

Overlay anomaly detection results  
Identify significant messages faster



# Operations Bridge delivered at required scale

Elastic scale with the cloud workloads



## AutoScale BVD based on usage

Scale with biz driven ad hoc mobile use

Allow easy scale up and down



MA<sup>1</sup> Nodes

## Distribute configuration management

Central Config for the Enterprise

Distributed enforcement system with 15k nodes each



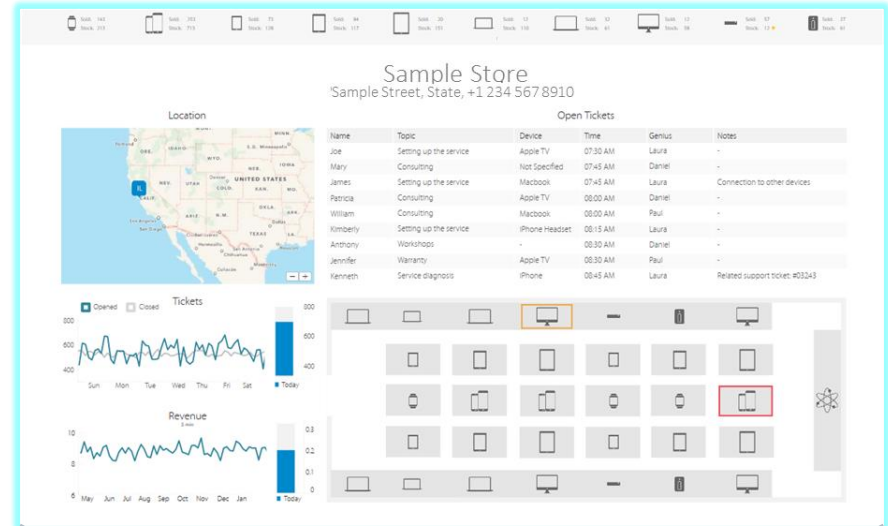
Event/sec

## Parallelize event processing

Process multiple events at the same time

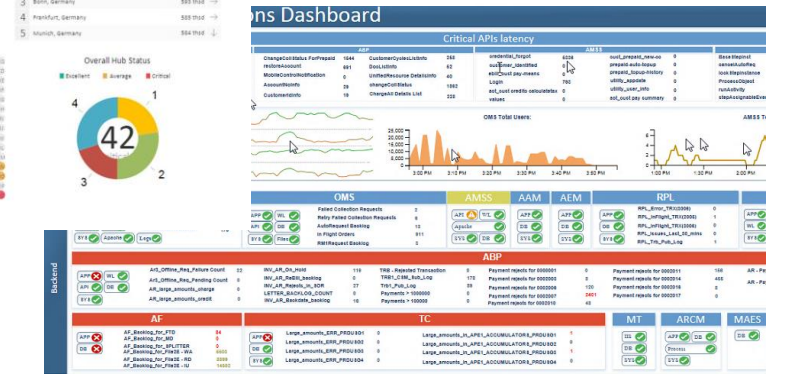
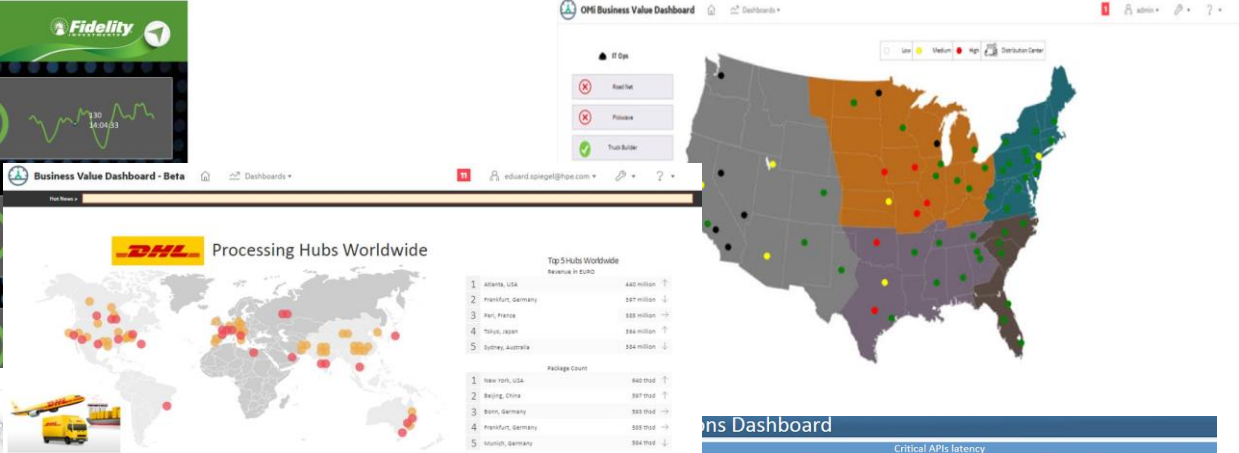
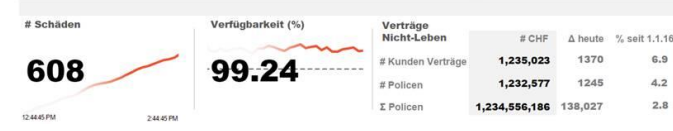
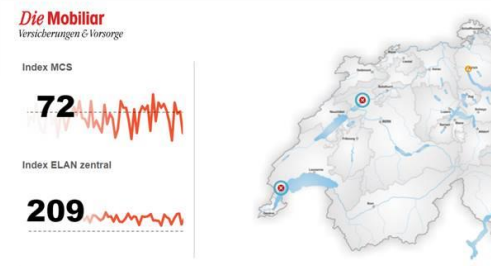
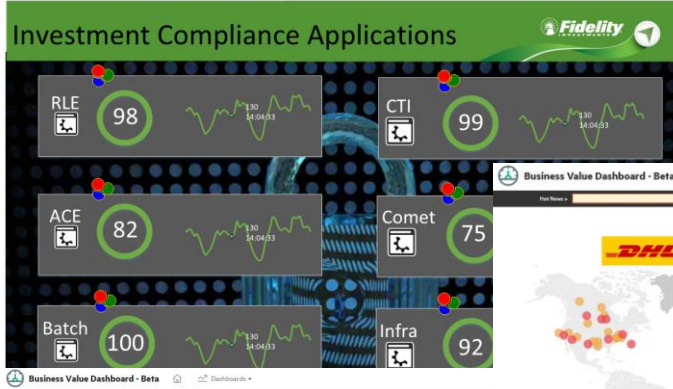
Sustain higher event optimization

Aim for elastic event throughput based on load



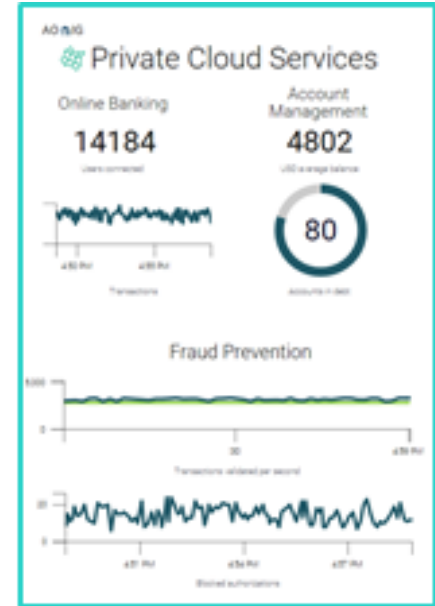


# Operations Bridge Dashboard – Community on HPLN



# Operations Bridge dashboard on your mobile device

Try for yourself





# Extending Business Value Dashboard Partner ecosystem

Adding SaaS & CLIP<sup>1</sup> integrations via partners



## CLIP Connector & Samples

Extend BVD connectors to SNOW & BMC

Provide sample dashboards for ticket statistics

Find content on [hpln.hpe.com](http://hpln.hpe.com)

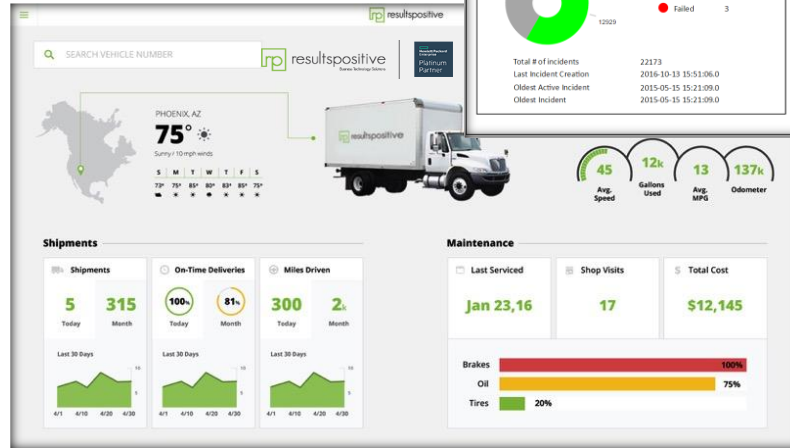
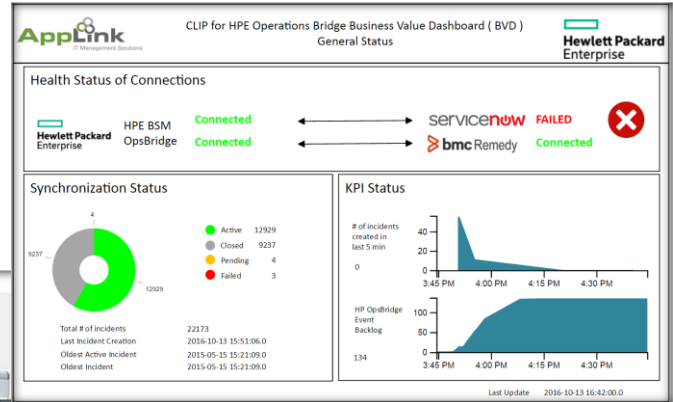


## SaaS Offer

Standalone BVD as SaaS offering

Provide design & implementation help

<http://resultspositive.com/business-value-dashboard/>



# Extend out of the box BVD connectors

## Aggregating Cloud Optimizer using BVD



### Consolidation

Data from multiple instances in one BVD

Cloud Optimizer script to consolidate data

Total capacity, utilization, capacity usage numbers, plus remaining capacity trend



### Drill-down

Drill down to a single Cloud Optimizer instance

Launch another BVD or the C. Opt GUI

Get details for compute and storage

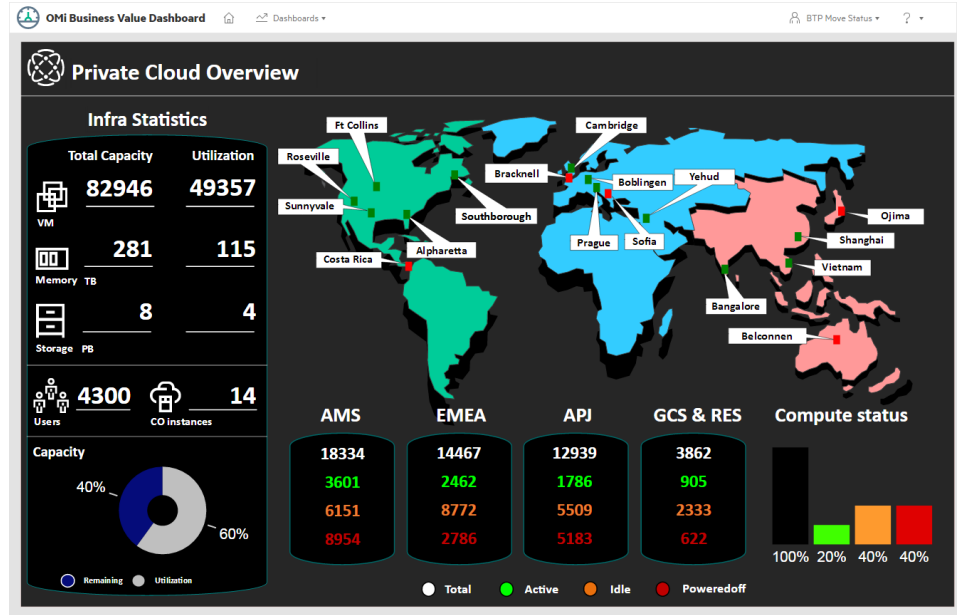


### Exec level Dashboard

Get regional and organizational status

Allow real time access to current status

i.e. identify wastage / idle time



Screenshot of live (production) BVD dashboard used by IT team for managing 50000+ VMs

# Full coverage system collector – Operations Agent



## 'Push' option for OpsBridge Ultimate

- Fully automated agent installation
- Multiple agent versions selection
- Utilizing OpsB Ultimate OO capabilities



## Cloud and container readiness

- hLinux (Helion)
- AWS Linux
- Docker container\*



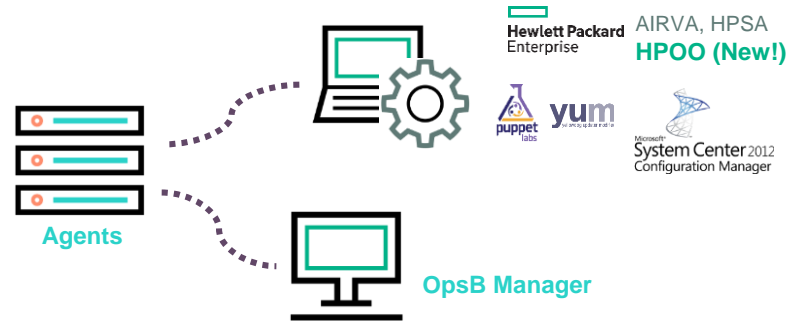
## Expand Platform Coverage

Fully functional zLinux agent

- Monitoring, performance, remediation
- On guest Redhat & SuSE VMs



Windows 2016, RHEL 6.8, 7.2, OEL 6.7, 6.8, 7.2,  
SuSE 11.4, 12, Solaris 11.3, Ubuntu 15.1, 16.04,  
CentOS 6.8, 7.2



# Manage your industrial IoT with Operations Bridge

Sense, analyze and adapt your IoT environment



## Sense IT & non IT data

Support industry standards APIs  
(OPC-UA, OPC-DA/XML, Mail interceptor)  
Out of the box vertical specific content (Wind)



## Analyze data in real time

Correlate from different data sources  
Custom business specific dashboards



## Adapt your devices securely

Control devices centrally via secure commur

## Business Value Dashboards show what's happening as it

### BVD - Windpark Manager



# Adopting new concepts with Operations Bridge

## Next Gen Detect to Correct Process – Chat Ops



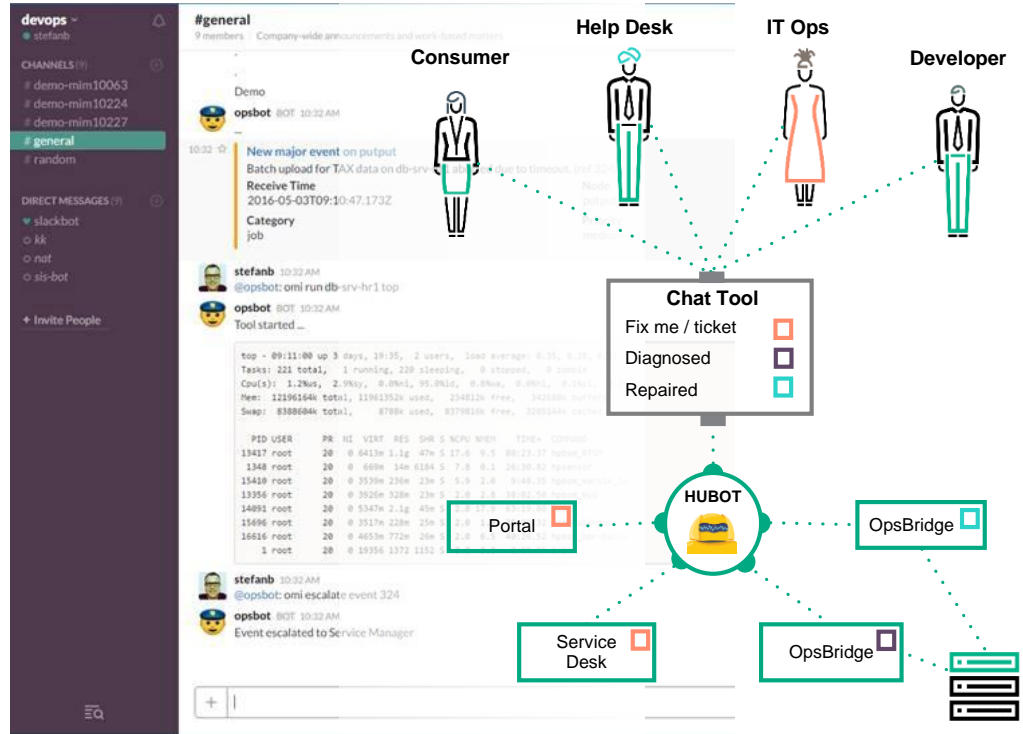
**Collaborate**  
with SMEs, teams and systems



**Utilize Knowledge**  
Preserve as a knowledge base  
Use for future analytics



**Automate**  
Interact with systems via bots  
OpsB bot available among others



# Operations Bridge drives efficiency across IT

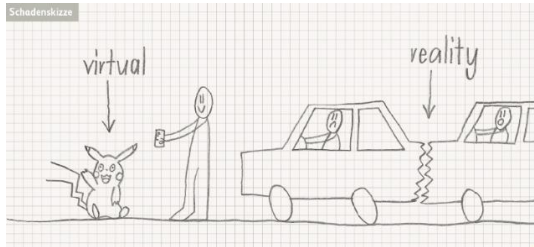
**33%**

Incident reduction

MTTR reduced by

**58%**

**Swiss Mobiliar**  
Insurance & Pensions



**750**

Man-hours  
savings/mon

Automated

**80%**

of their IT processes

**Fidelity**  
INVESTMENTS



**118%**

efficiency Improvement  
In 5 months

“The combination of OpsBridge,  
BVD and Appulse is unique on  
the market”

**Luke Bradley**

**vodafone**  
GERMANY



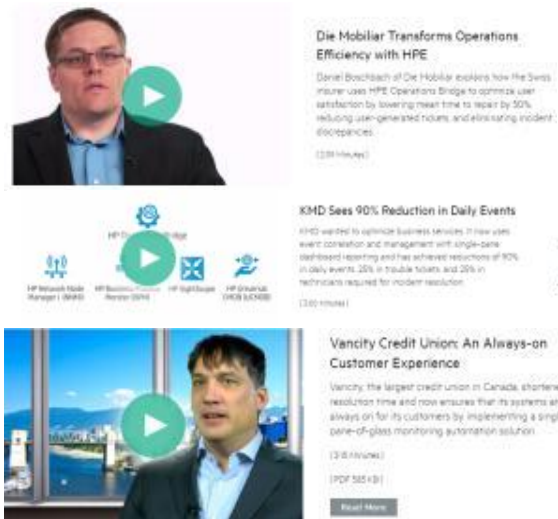
# Find out more

## Videos and demos



## BVD Live DEMO

## Customer use cases



## Web presence





**Hewlett Packard**  
Enterprise

**Thank you**

[Harald.burose@hpe.com](mailto:Harald.burose@hpe.com)

[ianb@hpe.com](mailto:ianb@hpe.com)



# Join our ITOM Post Discover Summit Webinars over the next two days...

## ITOM SESSIONS:

### [Big Data Service Desk: The Saga so far](#)

**1 February 2017**

5:00 AM - 6:00 AM EST (GMT-5:00), 11:00 - 12:00 CET (GMT+1:00), 15:00 – 16:00 IST (GMT+5:30)

Hemit (Helse Midt-Norge IT) has been running HPE Service Manager with Smart Analytics for almost two years to simplify ticket submissions and to enable fast and proactive problem management. They will share their experiences and ideas for the future.

### [Cloud Next: The next generation of cloud management software from HPE](#)

**2 February 2017**

6:30 AM - 7:30 AM EST (GMT-5:00), 12:30 - 13:30 CET (GMT+1:00), 17:00 – 18:00 IST (GMT+5:30) Bringing together hybrid and multi-cloud management, world class orchestration, application release automation, cloud compliance and an intelligent cloud service portal to help you accelerate operations responsiveness and achieve cloud freedom.

### [Master any cloud with Hybrid Cloud Management from HPE](#)

**2 February 2017**

8:00 AM - 9:00 AM EST (GMT-5:00), 14:00 - 15:00 CET (GMT+1:00), 18:30 – 19:30 IST (GMT+5:30)

Learn about the advantages that Hybrid Cloud Management can provide to you and your organization.

YOUR INDEPENDENT HPE SOFTWARE USER COMMUNITY

[REGISTER NOW!](#)



v i v i t

# Join our ADM Post Discover Summit Webinars over the next two days...

## ADM Sessions

### [Agile Delivery in a Continuously Regulated Environment](#)

**1 February 2017**

6:30 AM - 7:30 AM EST (GMT-5:00), 12:30 - 13:30 CET (GMT+1:00), 17:00 – 18:00 IST (GMT+5:30) Hear how Almac Information Services implemented HPE Agile Manager and delivered their project in 9 months as opposed to 2 years.

### [Enabling the shift towards Agile and DevOps capabilities](#)

**1 February 2017**

8:00 AM - 9:00 AM EST (GMT-5:00), 14:00 - 15:00 CET (GMT+1:00), 18:30 – 19:30 IST (GMT+5:30)

Learn about a proven methodology we've built to help you and your IT teams unleash the value in your existing investment.

### [Supporting the idea Economy in the World of Finance – IntelliQA with HPE Mobile Center](#)

**2 February 2017**

5:00 AM - 6:00 AM EST (GMT-5:00), 11:00 - 12:00 CET (GMT+1:00), 15:00 – 16:00 IST (GMT+5:30)

Discover how IntelliQA is delivering high-quality experiences to customers and accelerating time to market in the world of finance.

YOUR INDEPENDENT HPE SOFTWARE USER COMMUNITY

[REGISTER NOW!](#)



v i v i t

# Save the Dates: 16-19 May 2017



## EMEA Software Customer Forums 2017

16-19 May 2017  
Dublin

SAVE THE DATE



**Hewlett Packard**  
Enterprise

[Learn More](#)



vivit

# Thank You

- Complete the short survey and opt-in for more information from Hewlett Packard Enterprise.

<http://www8.hp.com/us/en/software-solutions/operations-bridge-event-correlation/index.html>

[www.vivit-worldwide.org](http://www.vivit-worldwide.org)



**Hewlett Packard  
Enterprise**

YOUR INDEPENDENT HPE SOFTWARE USER COMMUNITY



v i v i t



**Thank You**  
vivit-worldwide.org

