



YOUR INDEPENDENT HPE SOFTWARE COMMUNITY



How to Deliver Amazing Apps Fast in the Idea Economy: a DevOps Transformation

October 27, 2016

Brought to you by



**Hewlett Packard
Enterprise**



Hosted By



Mihai Grigorescu
Accenture High Velocity Application Development Lead
Accenture
TQA SIG Leader
Chicago Chapter Leader



Today's Speakers



Raffi Margaliot
Senior Vice President and General Manager
Application Delivery Management
Hewlett Packard Enterprise



Tali Levi Joseph
Vice President, Research & Development
Application Delivery Management,
Hewlett Packard Enterprise



Housekeeping

- This “LIVE” session is being recorded
Recordings are available to all Vivit members
- Session Q&A:
Please type questions in the Questions Pane



Webinar Control Panel

Toggle View Window between Full screen/window mode.

Questions



How to Deliver Amazing Apps Fast in the Idea Economy: a DevOps Transformation

Raffi Margaliot, SVP and GM Application Delivery Management, HPE Software
Tal Levi Joseph, Vice President, Research and Development, Application Delivery Management, HPE Software

HPE Software – Spin merge Announcement

The Combined Company

One of the world's largest pure-play software companies, with solutions designed to address the challenges customers are facing across key areas such as IT operations, security, information management, big data analytics, cloud, open source and development.



Kevin Loosemore
Executive Chairman



Mike Phillips
Chief Financial Officer

 **~\$4.5 billion**
in annual revenue**

- Over 50,000 customers
- Global reach
- Over 60% of revenue from recurring streams

Board of Directors*

- An HPE senior executive will serve on the board
- HPE will nominate 50% of independent directors

Select HPE Software assets include:

Big Data

IDOL



HPE Haven
OnDemand

IT Operations
Management

Service Anywhere

Cloud Orchestration

Data Center Automation

Application
Delivery
Management

ALM

AppPulse

Enterprise
Security



ATALLA



Information
Management &
Governance

Digital Safe

Data Protector

*After transaction closes

** Trailing twelve months as of April 30, 2016 for HPE's Software segment and Micro Focus including Serena Software for the full year

* Please refer to appendix for a detailed list of the HPE Software products tied to this transaction.



The digitization of everything creates a
unique opportunity for IT

The new world of application
delivery requires change across all
fronts



You have to balance speed and quality

A 5 year journey

FROM

8 products

Major release every 18-24 months

Build to QA every 2-4 weeks

Automation runs on demand for
specific areas



TO

15+ products

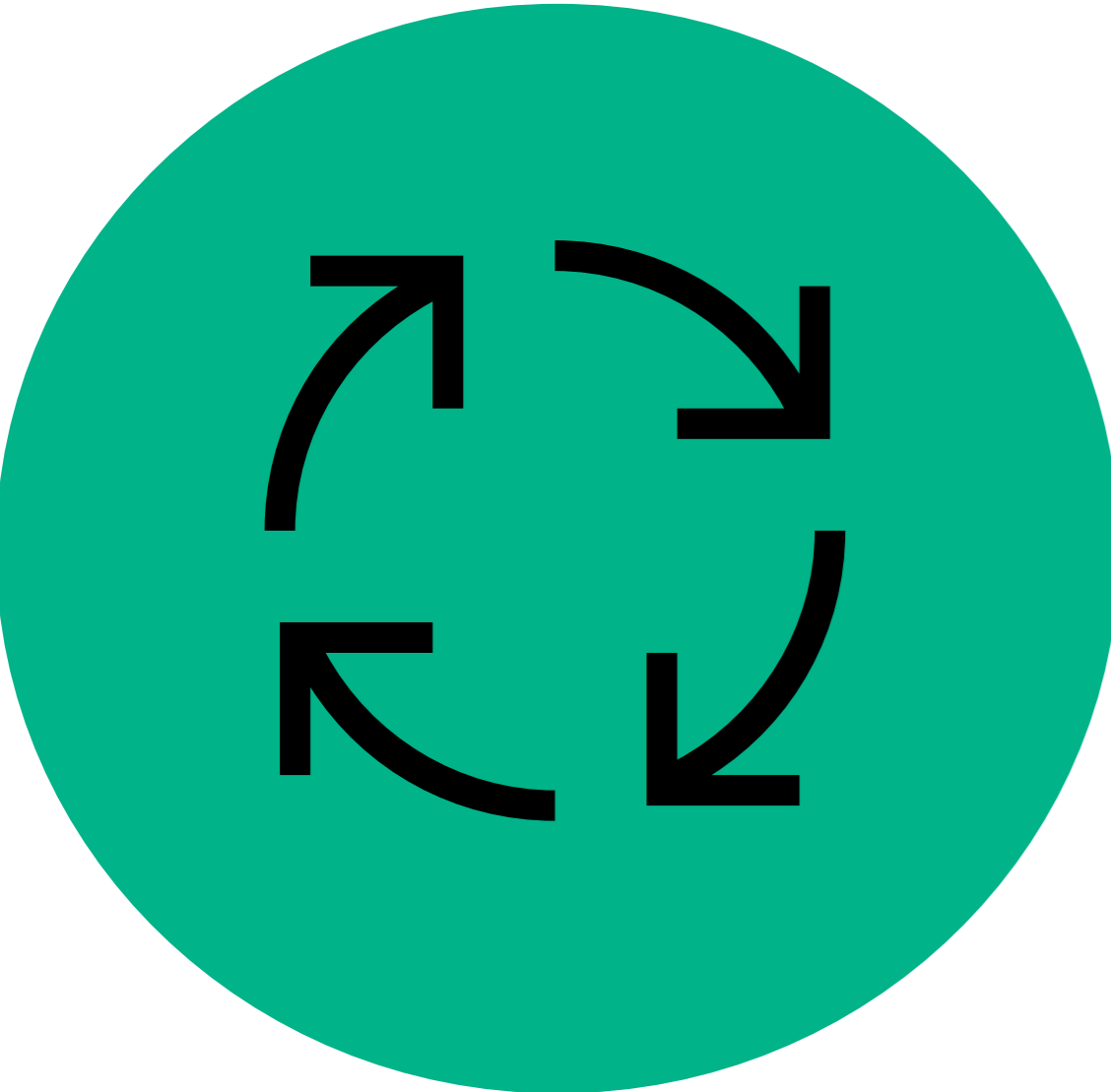
On-Prem release every quarter &
SaaS release every 4-8 weeks

Daily/hourly and continuous
builds to QA

Continuous automation in DevOps
pipeline

Transforming app delivery means you have to transform....

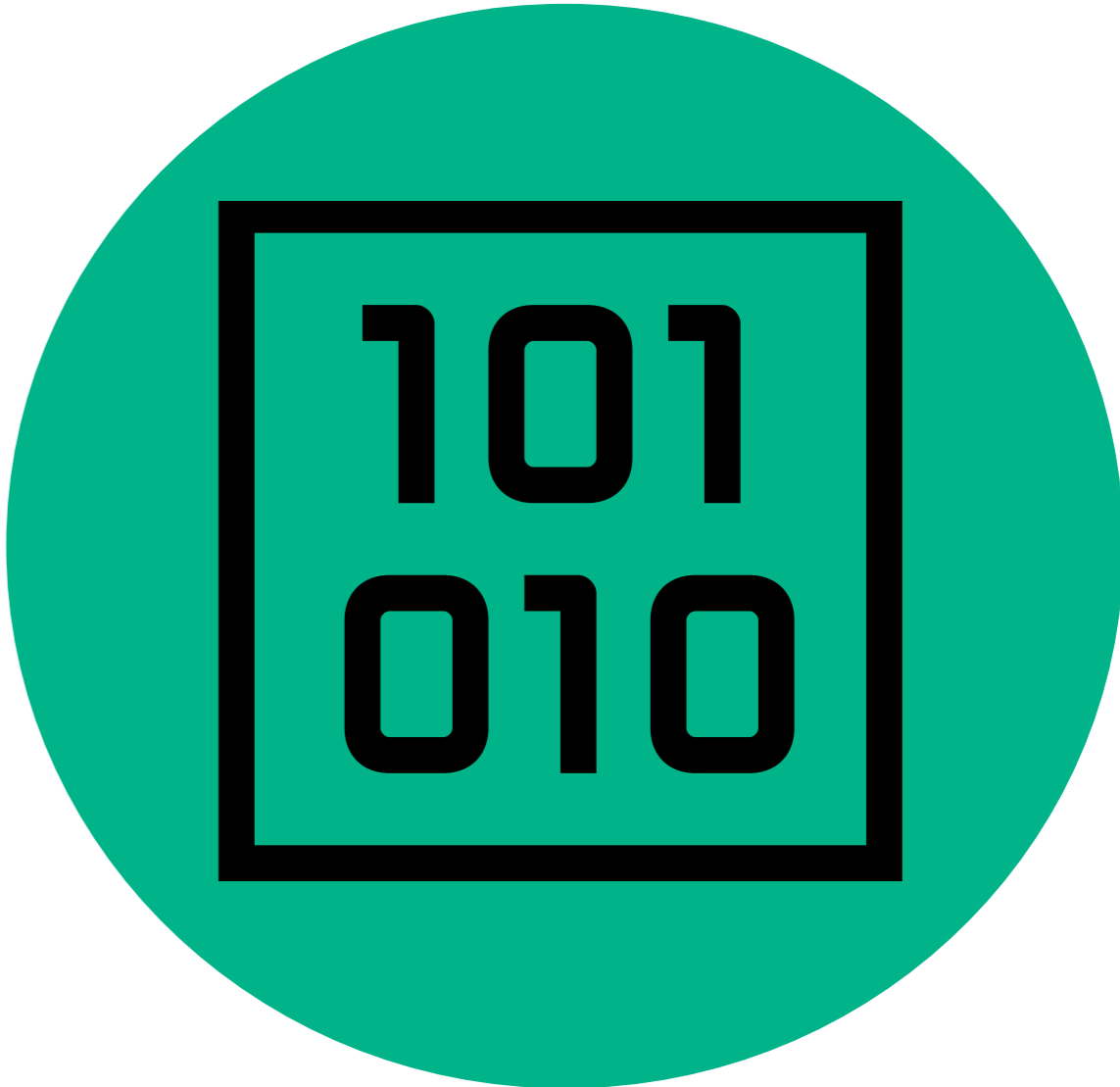
TECHNIQUE




TALENT



TECHNOLOGY





TECHNIQUE:
Time to value is defined by
automation, collaboration
and continuity

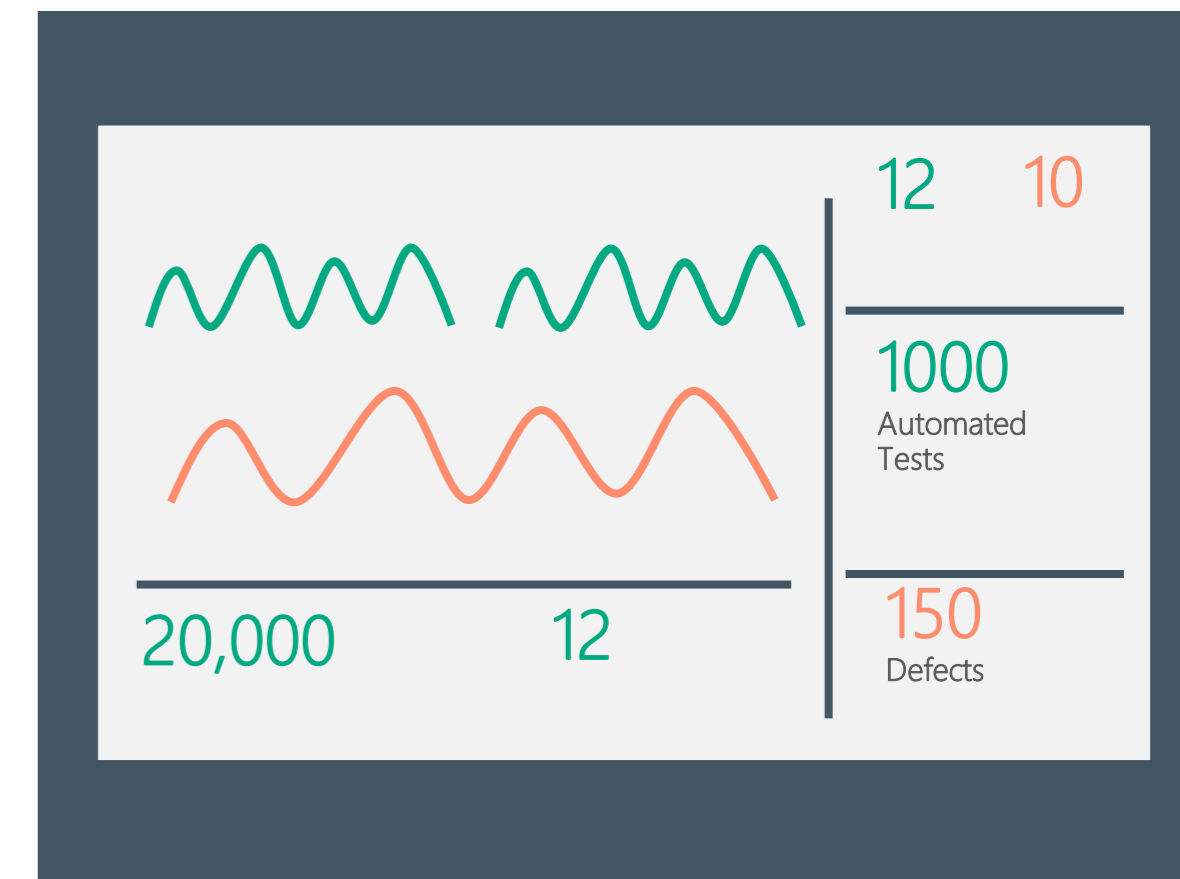
Move to DevOps

- Define your push to production cadence and stick to it
- Work based on priorities
- Leverage a Minimum Viable Product (MVP) mentality
- Rely on automation
- Done is done
- Continuous Feedback

10
Live
Branch

1000
Automated
Tests

23
Incremental
Features



12
Testing
Envs

20,000
Users in
Prod

ADM Agile release train model

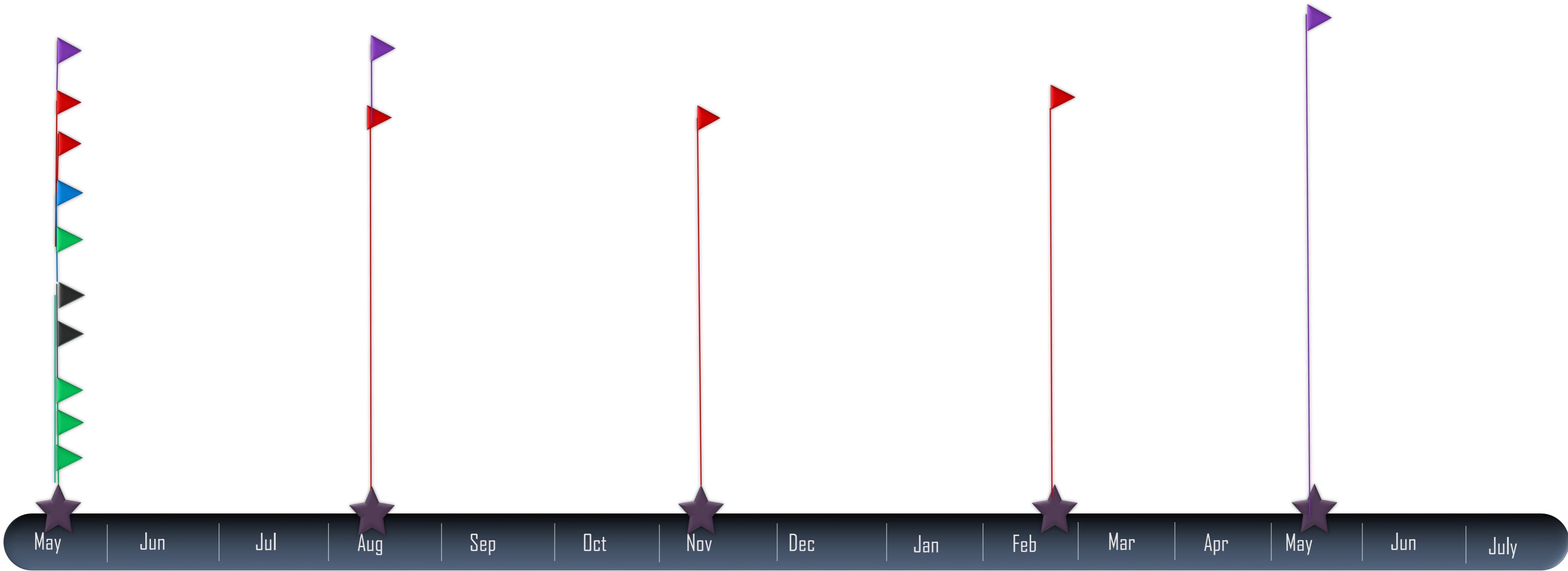
Q3 2016

Q4 2016

Q1 2017

Q2 2017

Q3 2017



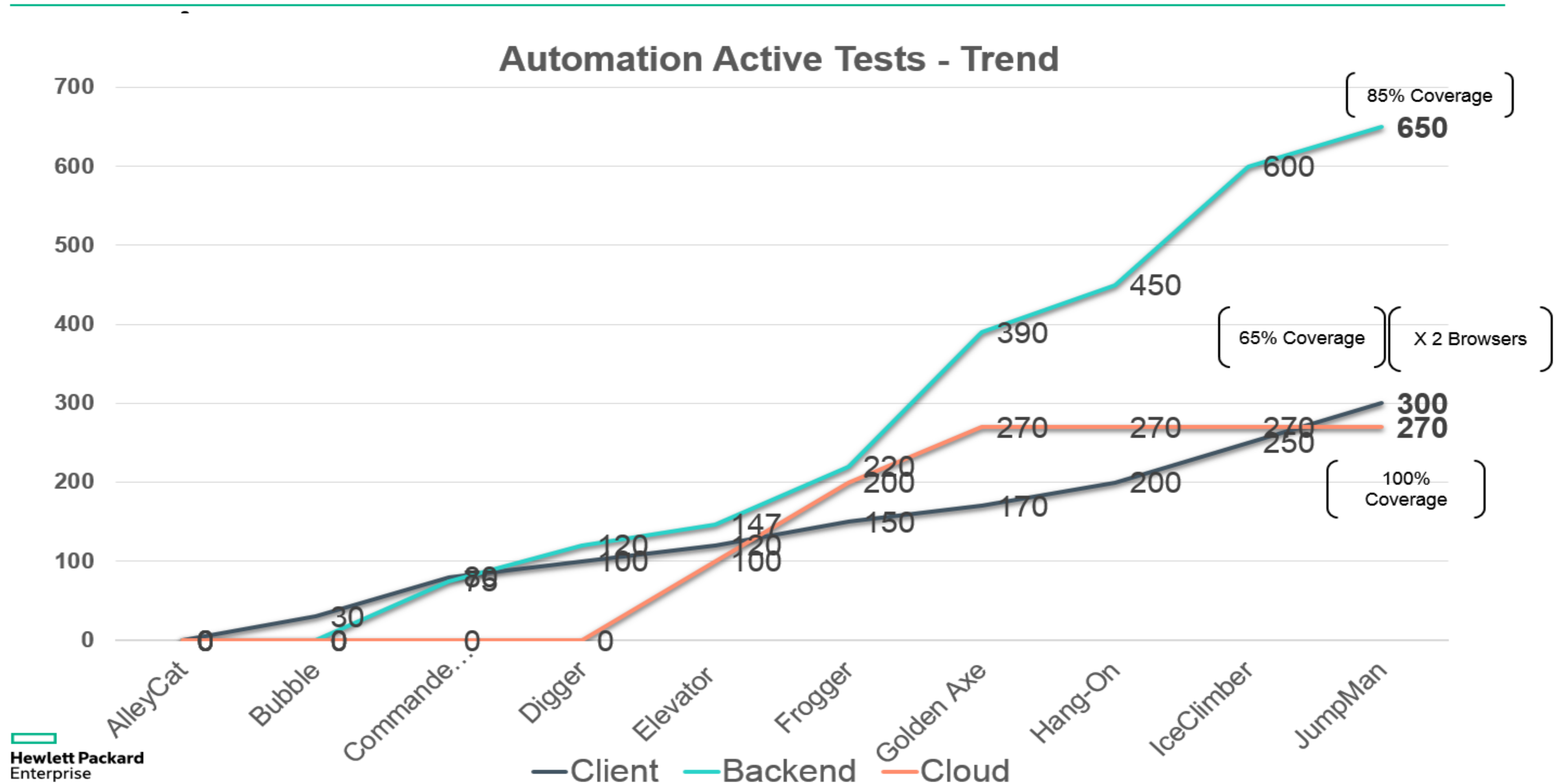
2016

2017

Work based on priorities

ID	Theme	Name	Feature Status SRL	Feature Story...	User Stories	Progress	Test Coverage	Quality Grade	Release	ETA to testing Planned	Priority
									Jump Man 1		
5330	Enterprise	Script labeling(folder management)	Done	40	24		100%	Yellow	Jump Man 1.95	Mar-27-2016	1-High
5476	Cloud	Rackspace - London revive	Done	10	6		100%	Green	Jump Man 1.95	Apr-10-2016	1-High
5081	Cloud	Additional IP addresses in cloud LGs	Done	15	10		100%	Green	Jump Man 1.95	Apr-03-2016	2-Medium
3518	Protocols	MDRV - SAP GUI	Done	5	8		100%	Green	Jump Man 1.95	Mar-01-2016	2-Medium
5332	Enterprise	Project Management	Done	105	36		100%	Green	Jump Man 1.95	Mar-24-2016	1-High
5346	Dev	Log enhancements	Done	6	11		100%	Green	Jump Man 1.95	Apr-03-2016	3-Low
5333	DevOps	Public Api's	Done	10	14		100%	Green	Jump Man 1.95		1-High
5290	DevOps	NGA integration - getting high level results / summary data vi...	Done	6	1		100%	Green	Jump Man 1.95	Mar-18-2016	2-Medium
5286	Protocols	Log collection for non-Mdrv protocols	Done	5	1		100%	Green	Jump Man 1.95	Mar-01-2016	2-Medium
5096	Monitoring	Docker SiteScope integration	Done	12	10		100%	Green	Jump Man 1.95	Mar-23-2016	2-Medium
5351	Dev	Tech Place Holder		77	15				Jump Man 1.95		3-Low

Rely on automation

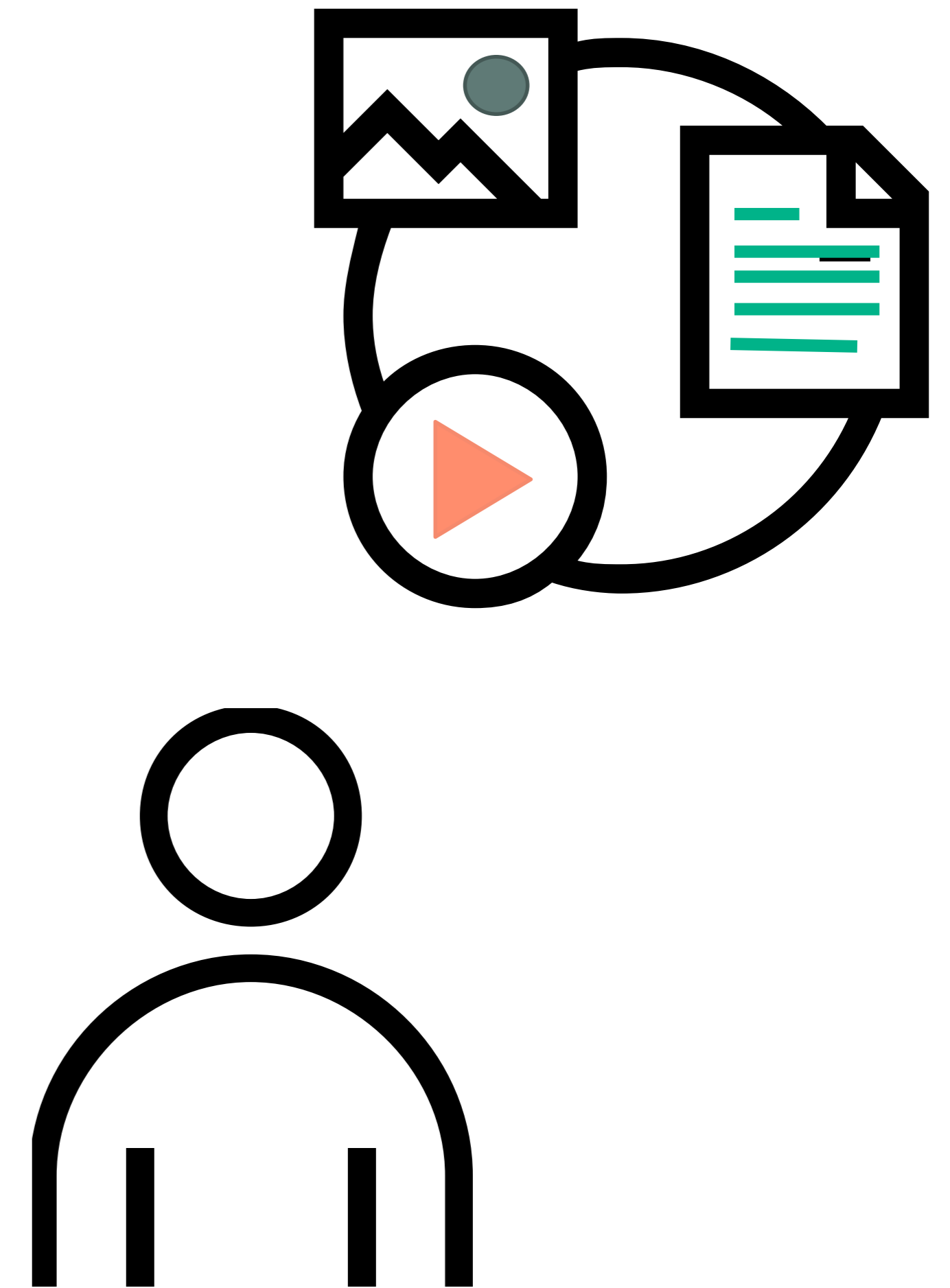


TALENT:

People need to look through the eyes of the customer, while having depth in technology and technique

Talent Is The Driver

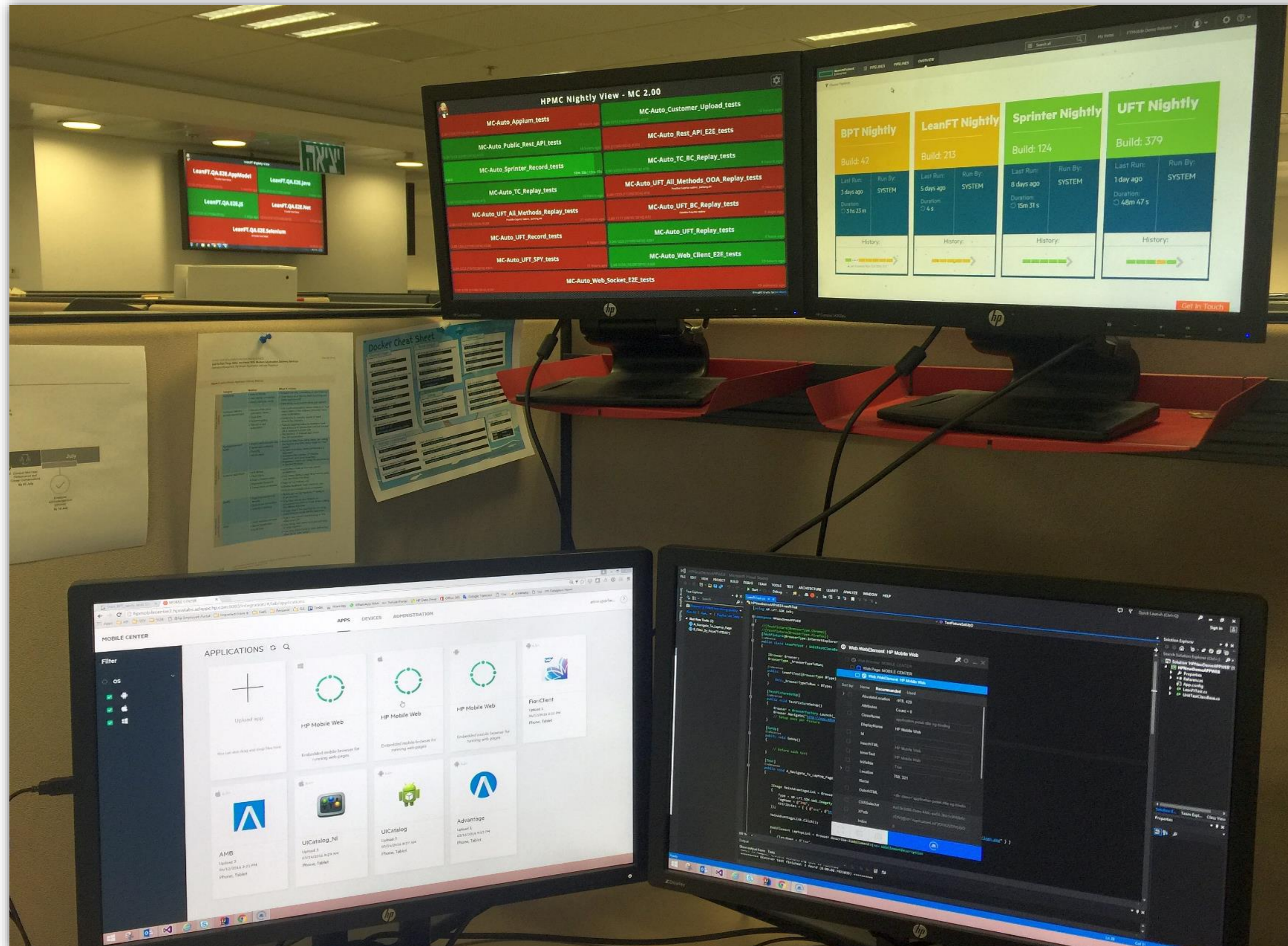
- Technologies and techniques are only as good as the people using them
- Agile removed communication barriers and broke team silos
- The next step was to move the day-to-day work into a unified tool-chain
- Profile and skill set are enhanced



The Multi Disciplinary Engineer

Jenkins
Monitors

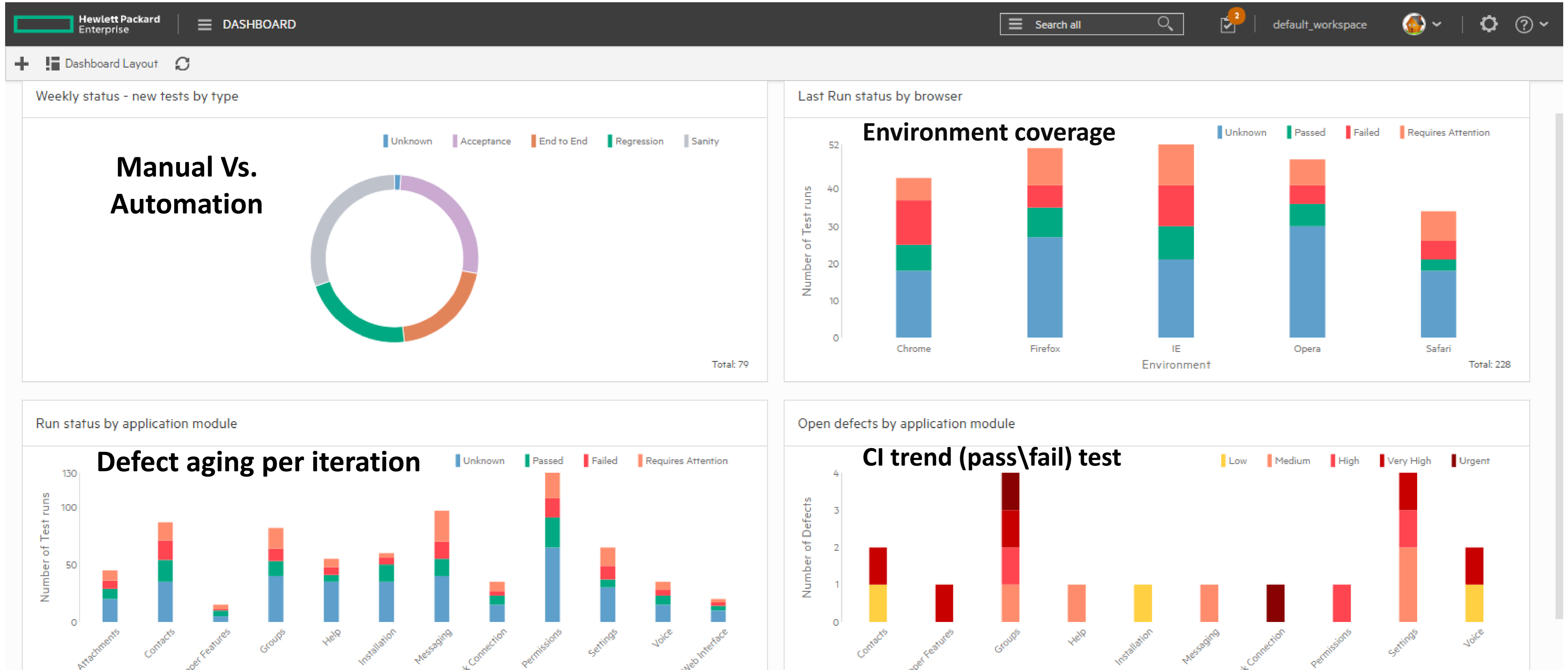
ALM Octane
Pipeline
Summary



Mobile
Center
(AUT)

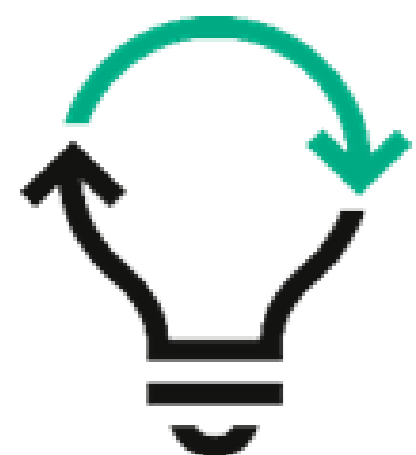
ID
E

Our QA Dashboard



The Outcome

- **33,477 tests:** UI and Backend
- **100's of servers:** For functional, security and performance tests
- **Over 75 hours of test runs:** Automatically executed in parallel
- **More than 90 test environments:** Auto provisioned and ready to use

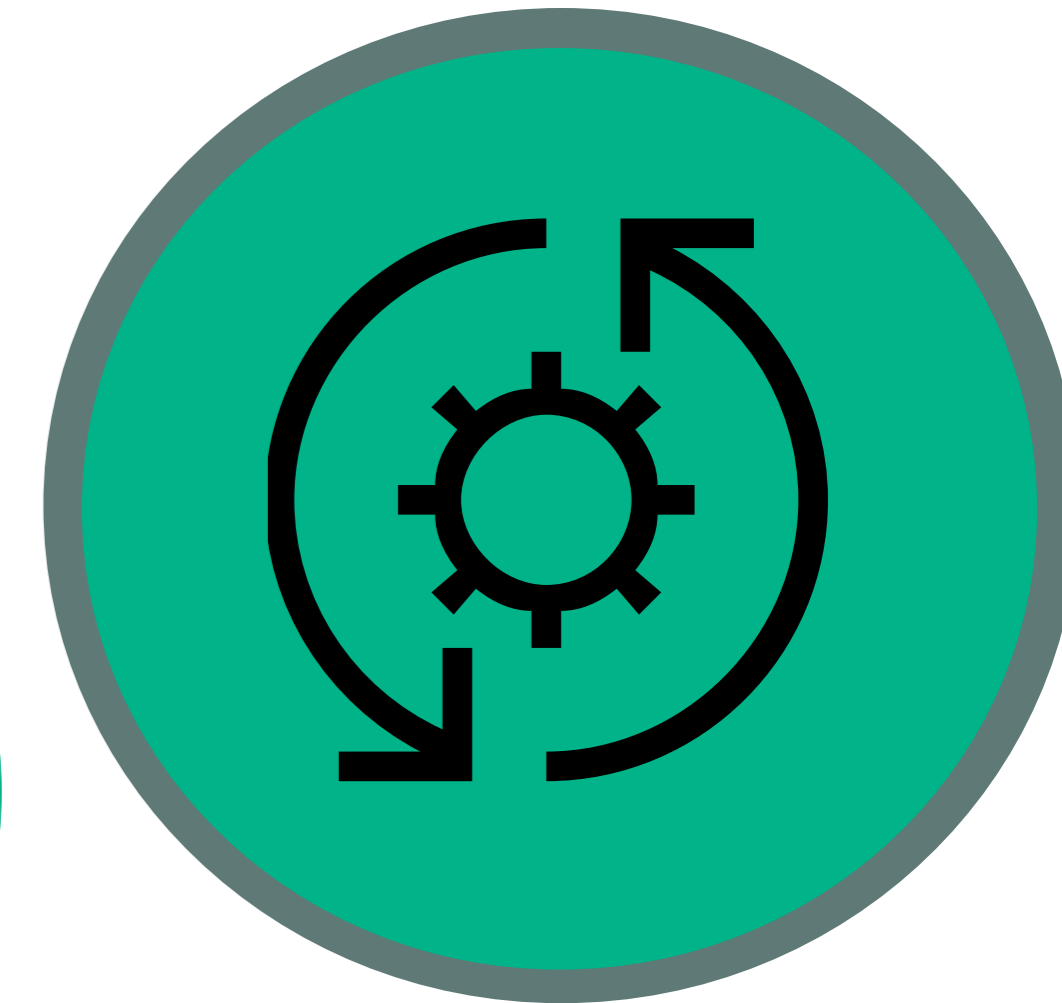
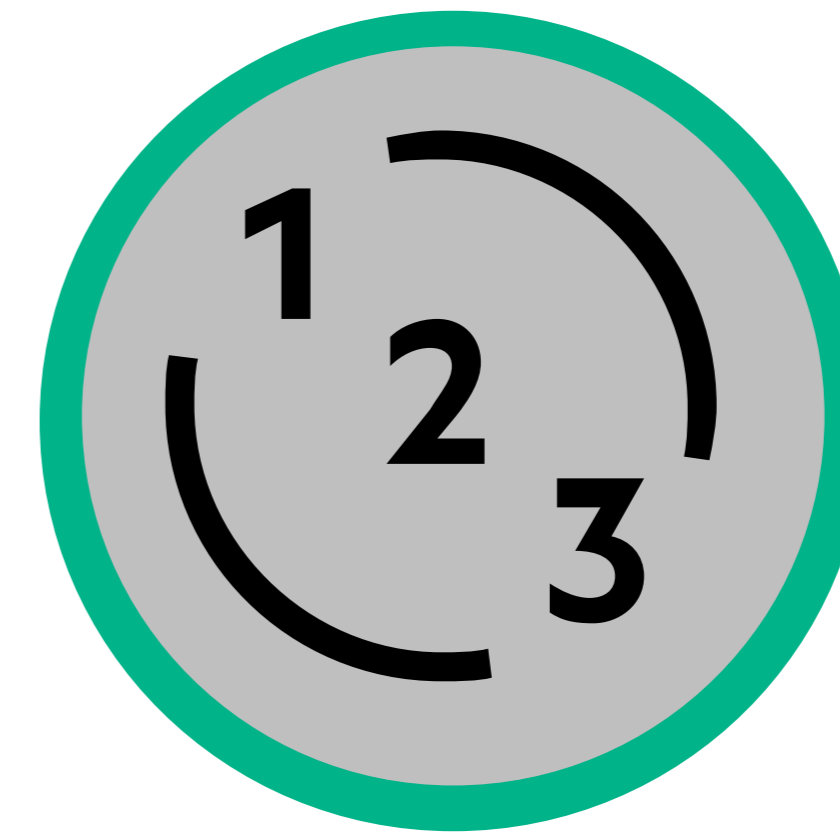


EVERY NIGHT



Groom Your Talents

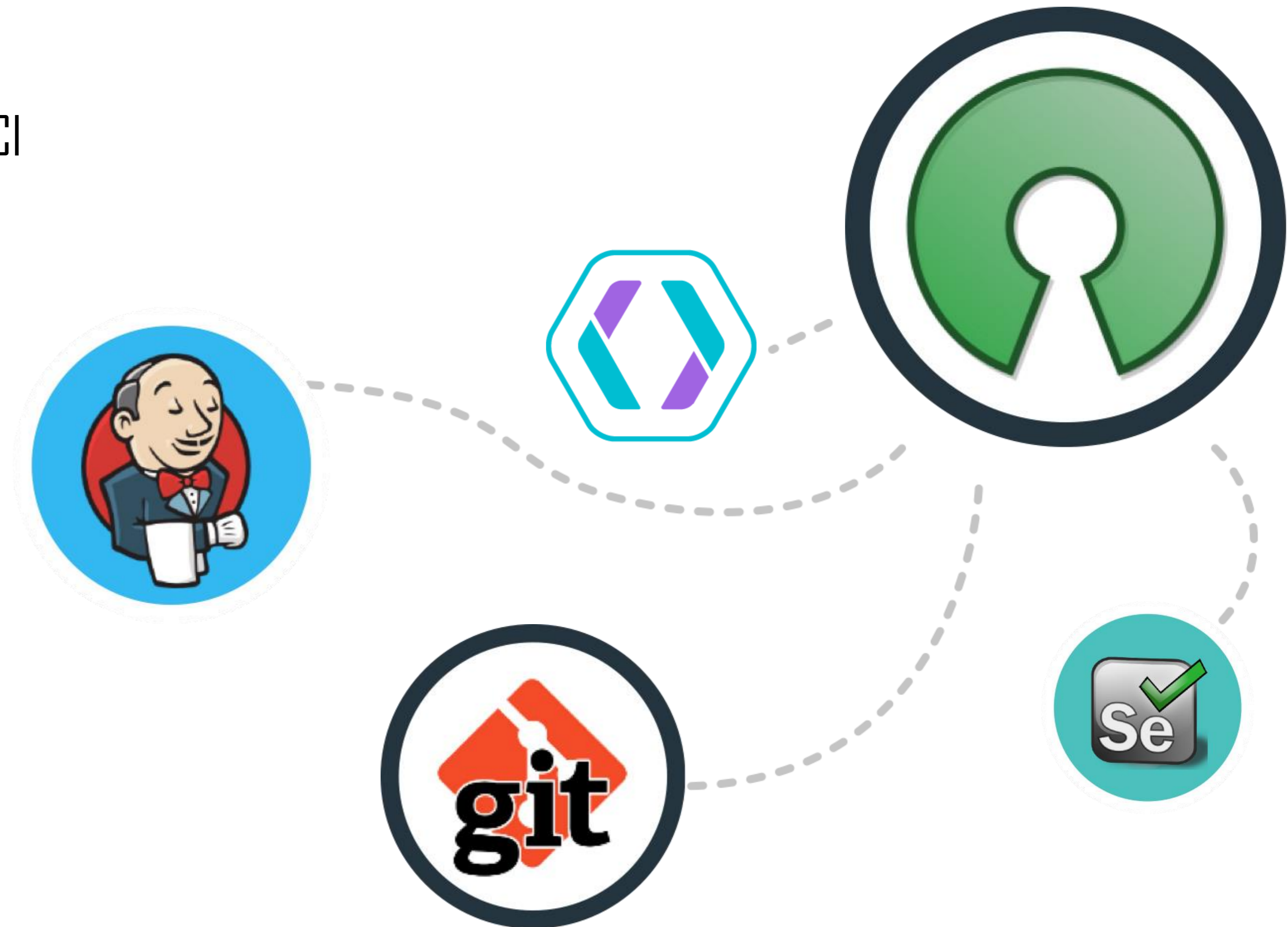
- **Invest** in training and methodologies for **all** of the team
- **Leverage** QA experience & professionalism
- **Provide** the right tooling and support
- Find the skillset **balance** between team members
- Build it to fit **your** needs



TECHNOLOGY:
Tooling needs to support **faster**
delivery, at **scale** without
compromising **quality**

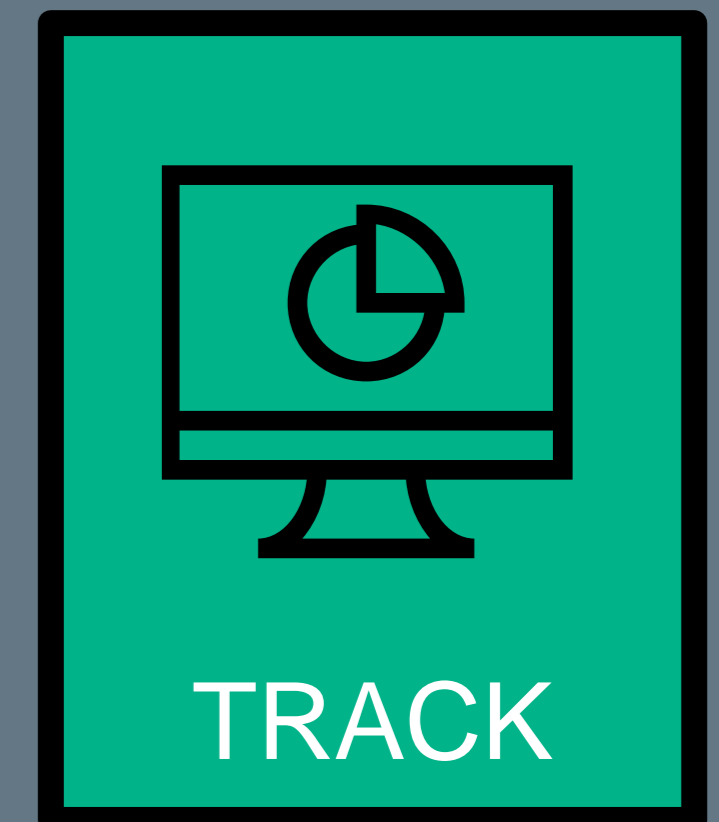
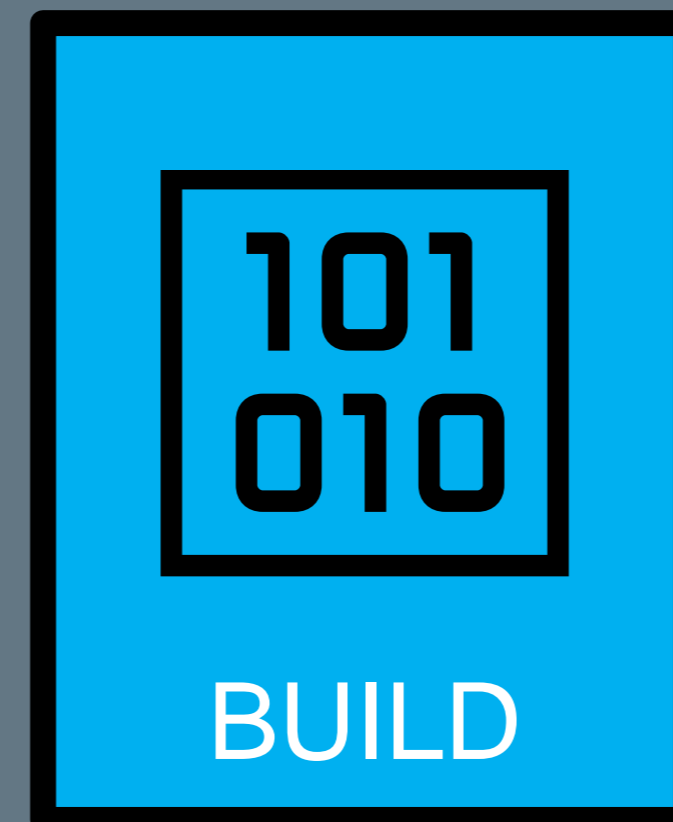
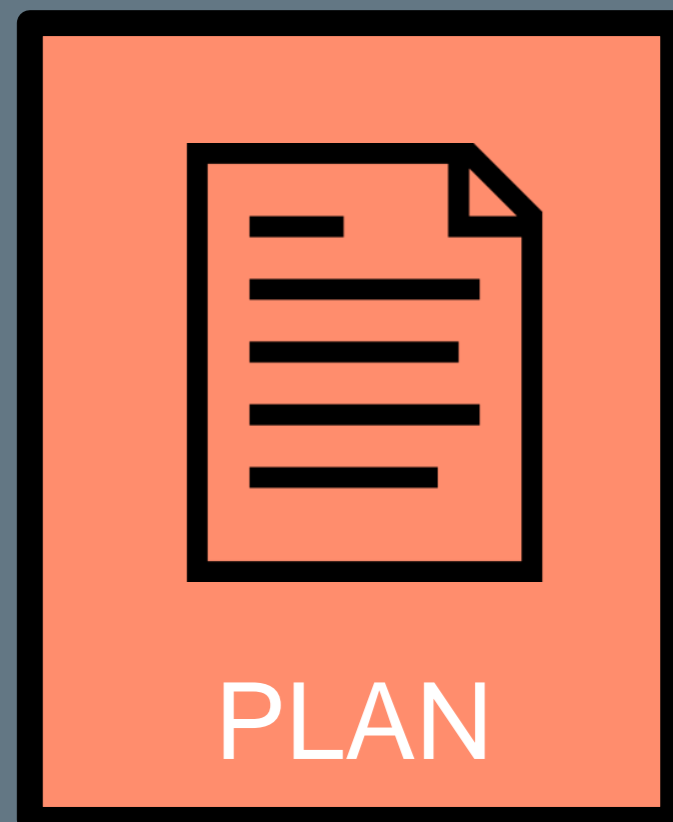
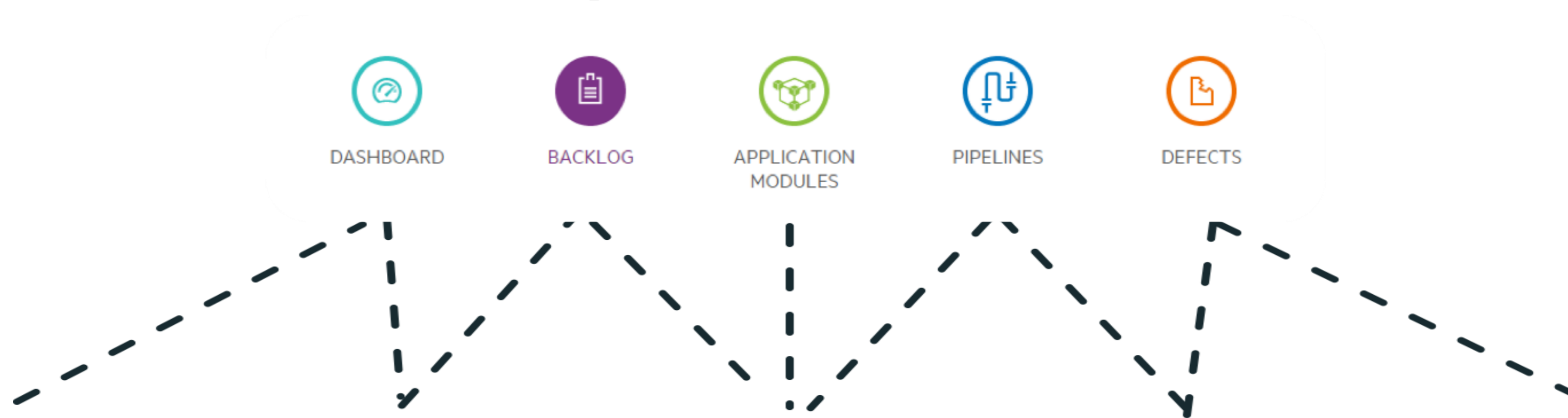
Challenge 1: how to integrate quality throughout the process

- Choose testing framework that Integrate into your CI whether commercial or open source
- Tests should be part of the code
- Design for automation, test your API
- Define what to tests for each step of the process



Challenge 2: how to get visibility across the toolchain

Provide a dashboard across tools for a single view



Integrate your CI into your Management system



The screenshot displays the Hewlett Packard Enterprise CI/CD management interface. The top navigation bar includes 'PIPELINES' and 'OVERVIEW' tabs, a search bar, and workspace information. The main content area shows a pipeline named 'On premise deployment' with a 'Run Pipeline' button. The pipeline is visualized as a series of stages:

- Full-Root-master-MJ**: Build: #15 | Duration: 7.7m (Warning icon)
- Check-Style**: Build: #50 | Duration: 3.2s (Success icon)
- Compile-Server**: Build: #50 | Duration: 1.5s (Compile icon, Success icon)
- Compile-Client**: Build: #51 | Duration: 1.5s (Compile icon, Success icon)
- Package-App**: Build: #51 | Duration: 2.4s (Package icon, Success icon)
- Aggregation-Test-MJ**: Build: #13 | Duration: 2.0m (Test icon, Success icon)
- Test-Unit**: Build: #57 | Duration: 14.1s (Test icon, Success icon)
- Test-System**: Build: #57 | Duration: 14.1s (Test icon, Success icon)

The 'Test-System' stage includes a sub-view with the following details:

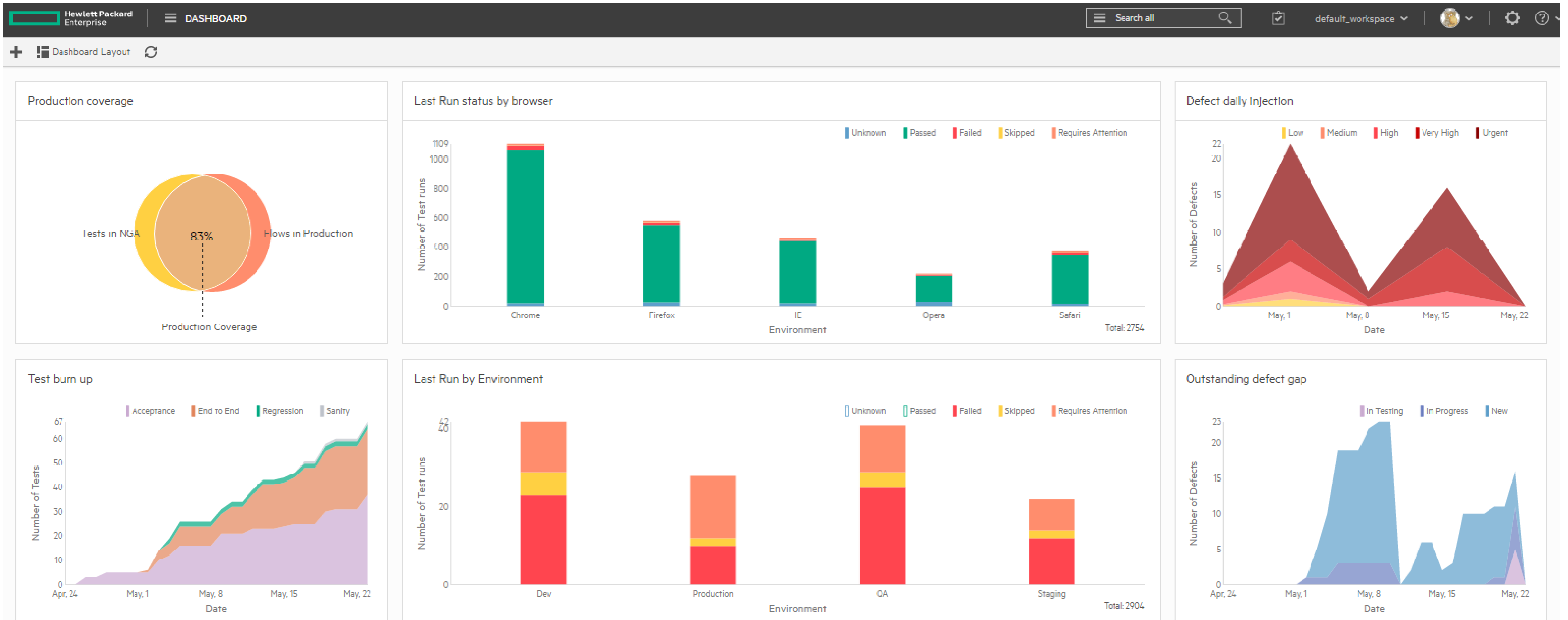
- JUnit: System Test, Regression
- Dev: Fedora, Linux

On the left sidebar, there is a list of other pipelines:

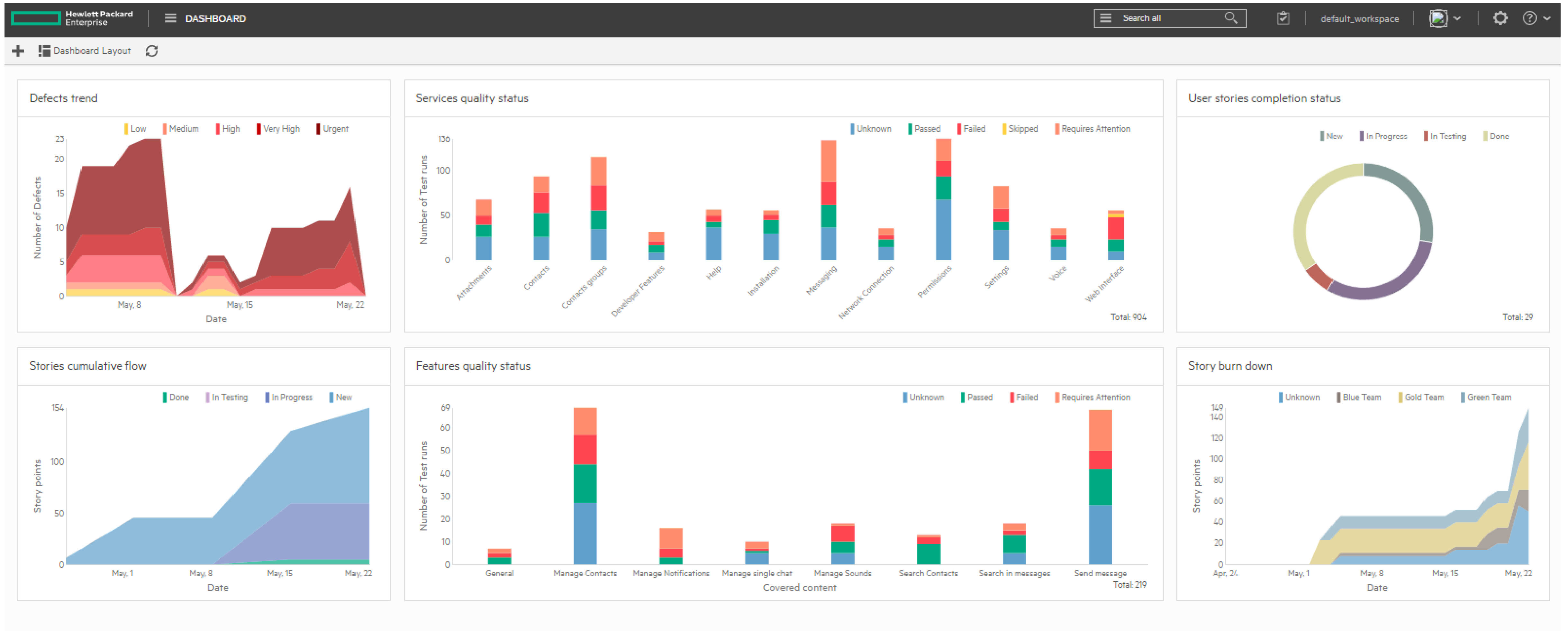
- Nightly full CI**: Build: #20 | 4.2m | Last run: Dec 1 2015, 18:31 (Warning icon). Stats: 883 Passed, 6 Failed, 4 Attention, 893 All.
- On premise deployment**: Build: #15 | 7.7m | Last run: Dec 1 2015, 16:02 (Warning icon). Stats: 886 Passed, 3 Failed, 4 Attention, 893 All.
- Quick CI**: Build: #17 | 2.0m | Last run: Nov 30 2015, 15:42 (Error icon). Stats: 362 Passed, 0 Failed, 2 Attention, 364 All.

A 'Join the beta' button is located in the bottom right corner.

Test across platforms and environments

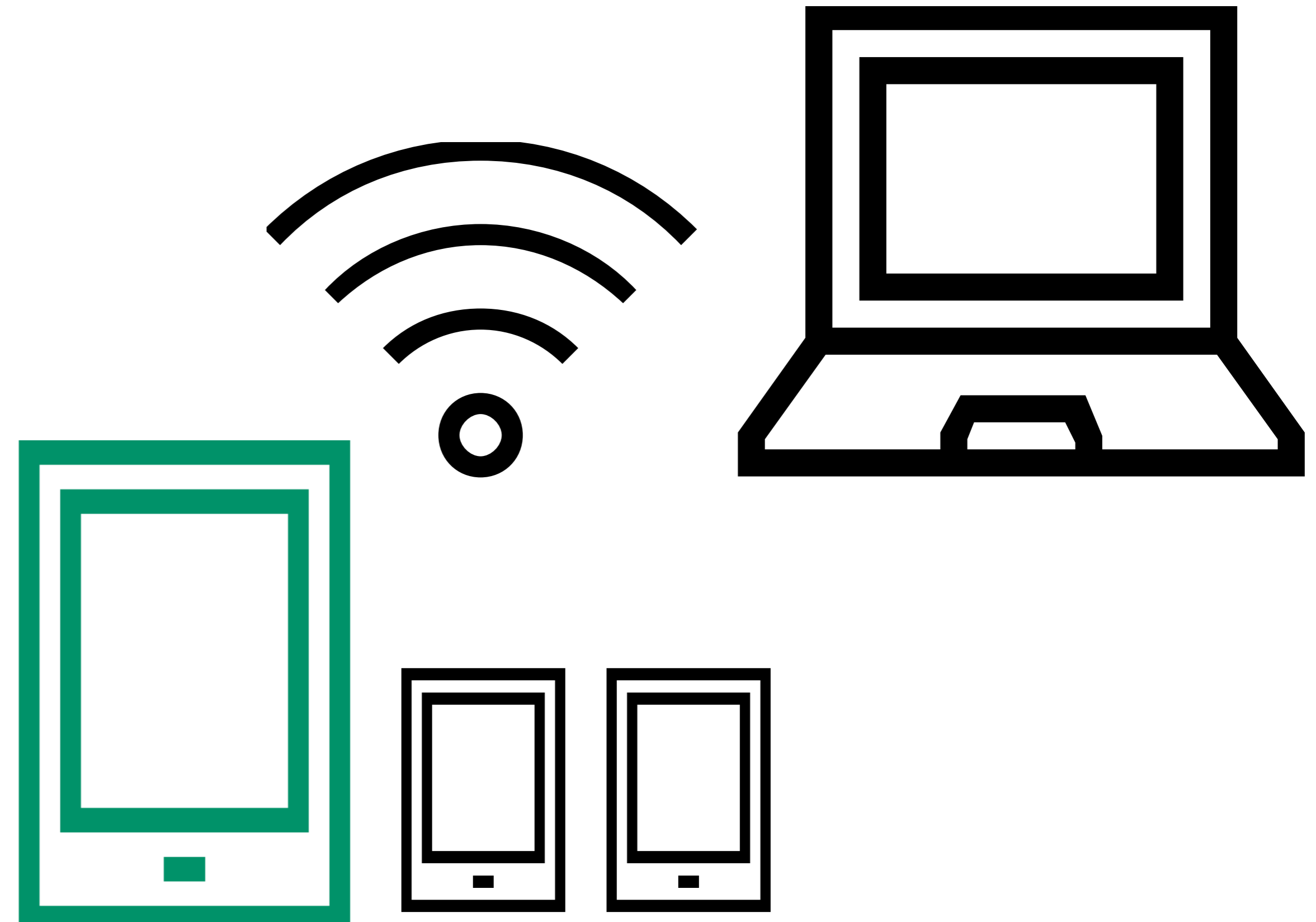


Track progress and quality in a single view



Challenge 3: how to scale across technologies

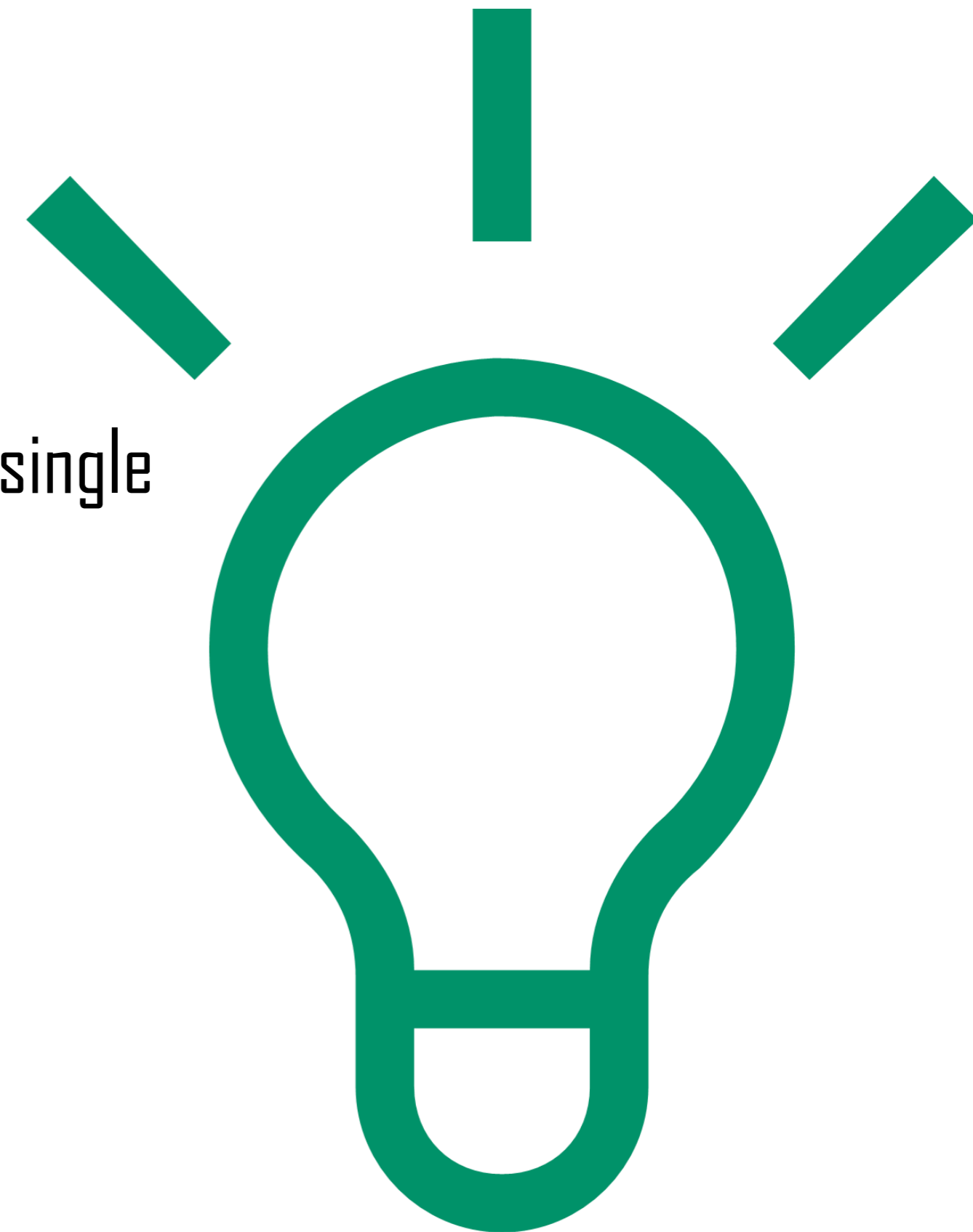
- Automate testing and deployment across platforms
- Virtualize to remove roadblocks
- Harness the power of the cloud
- Design services with minimal dependencies
- Work with vertical teams



What we learnt.....

Develop a set of core principles that help guide decision making and assist in trade offs.

- Break into Pieces - Micro Services
- Teams can pick their technology as long as they Communicate over REST APIs and provide a single user experience
- Invest in continuous delivery to achieve automated production updates
- Data should be interchangeable across systems





Q&A

Thank you



ADMaazing

hpe.com/software/adm

[@hpe_alm](#)



Discover
2016
London
Nov 29 -
Dec 1

Discover 2016 London

- Excel London

- In today's idea economy, success favors enterprises that can reinvent to outpace the competition. Discover 2016 can put your enterprise in the lead. Come to the intersection of digital transformation, technology and ideas. Accelerate what's next for your business.
- Join more than 10,000 IT executives, architects, engineers, partners and innovators from around the globe. Accelerate your unique digital transformation journey. Explore how to deliver seamless experiences, harness data, mitigate risk, boost agility and enable workforce productivity.
- Dive into Discover 2016.

Register Now and receive your member discount
hpe.com/discover



Top ten reasons to attend

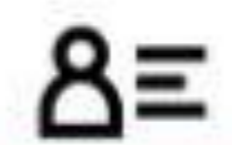
1



Get ready to transform your IT

Transforming to a hybrid infrastructure, protecting your digital enterprise, empowering the data-driven organization and enabling workplace productivity can position your enterprise for success. Learn how Hewlett Packard Enterprise is the best strategic digital partner equipping you for transformation.

2



Hear from the Hewlett Packard Enterprise leadership team and other industry visionaries

Learn about our four Transformation Areas and hear directly from President and Chief Executive Officer Meg Whitman and the executive team on how Hewlett Packard Enterprise is helping you go further, faster.

3



Accelerate next with Hewlett Packard Enterprise Transformation Advisors

Bring your digital transformation to life through one-on-one consultations with our solution architects on hand to answer your questions and address your challenges to help you accelerate what's next for your business.

4



Seize valuable opportunity

Time-to-value is the new name of the game, and the ability to capitalize immediately is key to survival. Through the Transformation Zone and Innovation and Spotlight Sessions, you'll learn how HPE can help you transform your organization to significantly reduce the time-to-value of your IT investments.

5



Accelerate transformation with IT consumption

The velocity of change in today's IT world is daunting. Driving innovation while still running the business is essential. Through a series of Spotlight, Theater and Breakout Sessions, learn how you can fund transformation, map your investment strategy to your IT roadmap and achieve faster time-to-market.

6



Take a sneak peek at tomorrow's technologies

Customers and partners under CDA can get early access to preview upcoming Hewlett Packard Enterprise products and solutions.

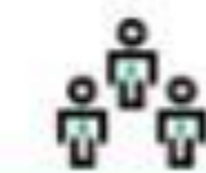
7



Find answers to your biggest business and IT challenges

Discover 2016 is the perfect place to find solutions, seek new innovations and learn how Hewlett Packard Enterprise can help your enterprise succeed.

8



Explore the Transformation Zone

Interact with experts and peers and learn more about Hewlett Packard Enterprise's most innovative technologies. See the latest products and solutions while speaking with the engineers and architects who created them.

9



Expand your network and grow relationships

Engage with other IT professionals, schedule formal onsite meetings at the Hewlett Packard Enterprise Meeting Center or visit the Guru Bar to chat with Hewlett Packard Enterprise experts.

10



Tap into the power of our partners

Meet with Discover 2016 sponsors, including Intel and Microsoft, in the Transformation Zone. See how collaboration and our growing network is bringing more opportunity and advantages for you.

Thank you

- Complete the short survey and opt-in for more information from Hewlett Packard Enterprise.

www.hpe.com

www.vivit-worldwide.org

