



Workshop: Mobile Performance Testing Series I

May 10, 2016

Brought to you by



**Hewlett Packard
Enterprise**



Hosted By



Chris Trimper
Western New York Chapter Leader
Performance Engineering SIG Leader



Today's Speakers



Silvia Siqueira
Product Marketologist
Hewlett Packard Enterprise



Gaspare Marino
Product Marketing Manager
- Performance Engineering
Hewlett Packard Enterprise



Housekeeping

- This “LIVE” session is being recorded
Recordings are available to all Vivit members
- Session Q&A:
Please type questions in the Questions Pane



Webinar Control Panel

Toggle View Window between Full screen/window mode.

Questions





**Hewlett Packard
Enterprise**

Introduction to mobile performance testing

Silvia Siqueira
Product Marketologist

Gaspare Marino
Product Marketing Manager - Performance Engineering



Agenda

- Thrive to the new now: digital transformation
- Why mobile performance testing and its challenge
- Mobile performance explained
- HPE LoadRunner and HPE Mobile Center: test on real devices
- Understanding network conditions for mobile apps
- Demo
- Q&A



A woman with long dark hair, wearing a bright yellow dress and a colorful plaid scarf, stands in a train station. She is looking down at a blue smartphone in her hands. The background is a blurred train with blue and white stripes, suggesting motion. The overall scene conveys a sense of modern, fast-paced life.

**Thrive to new now!
Digital transformation**

Why mobile performance testing?

Deliver great customer experience

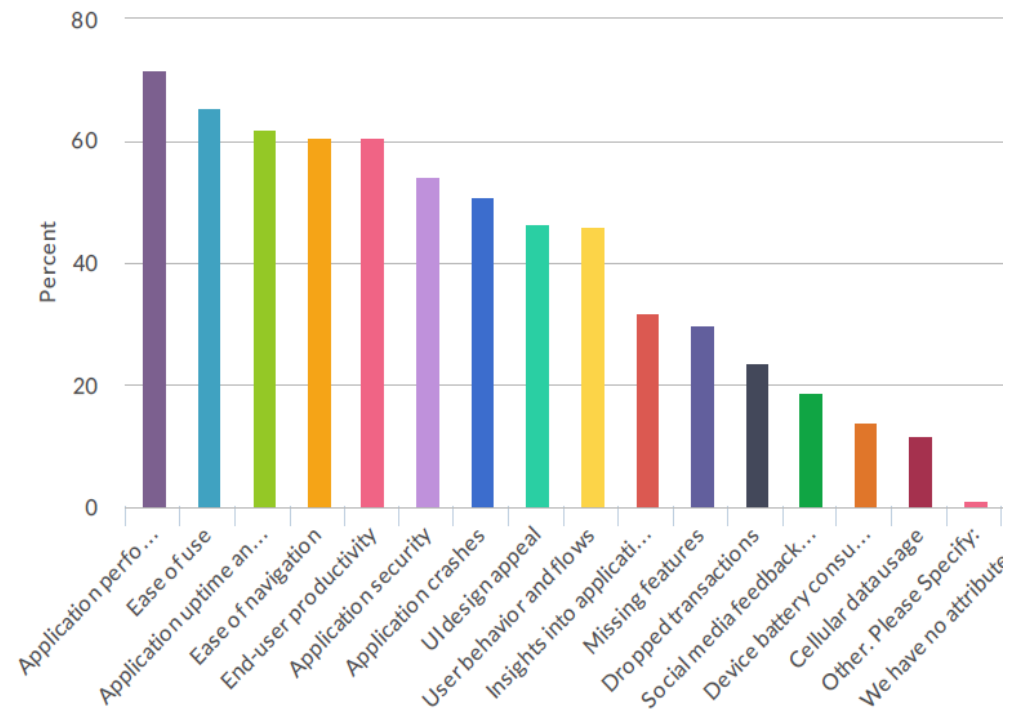
All the interactions a person has with your brand

Customer Experience (CX)

User Experience (UX)

The perceived quality when users are interacting with your brand

5. For your company, which of the following define the user experience? Select all that apply.



Dimensional Research April 2016



Build

Build a memorable digital experience based on extensive real-world testing.



Monitor

Find out how users are experiencing your app with continuous analytics and performance monitoring.



Optimize

Continuously improve the digital user experience by uncovering and fixing any performance or security issues.

www.hpe.com/software/digitalUX



Client



Network



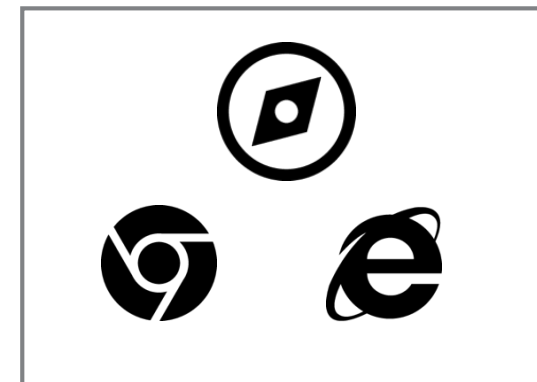
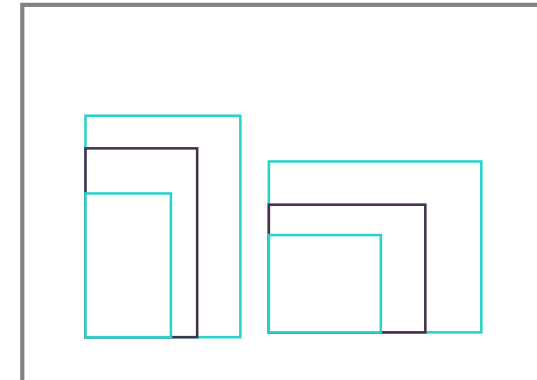
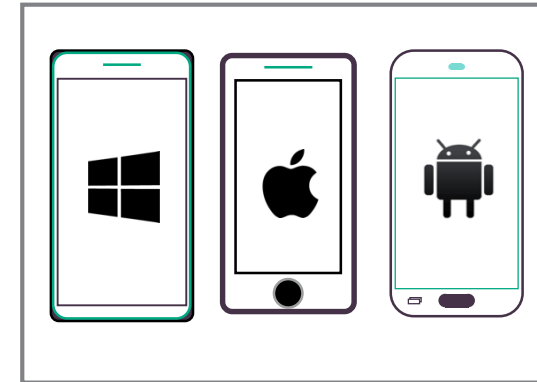
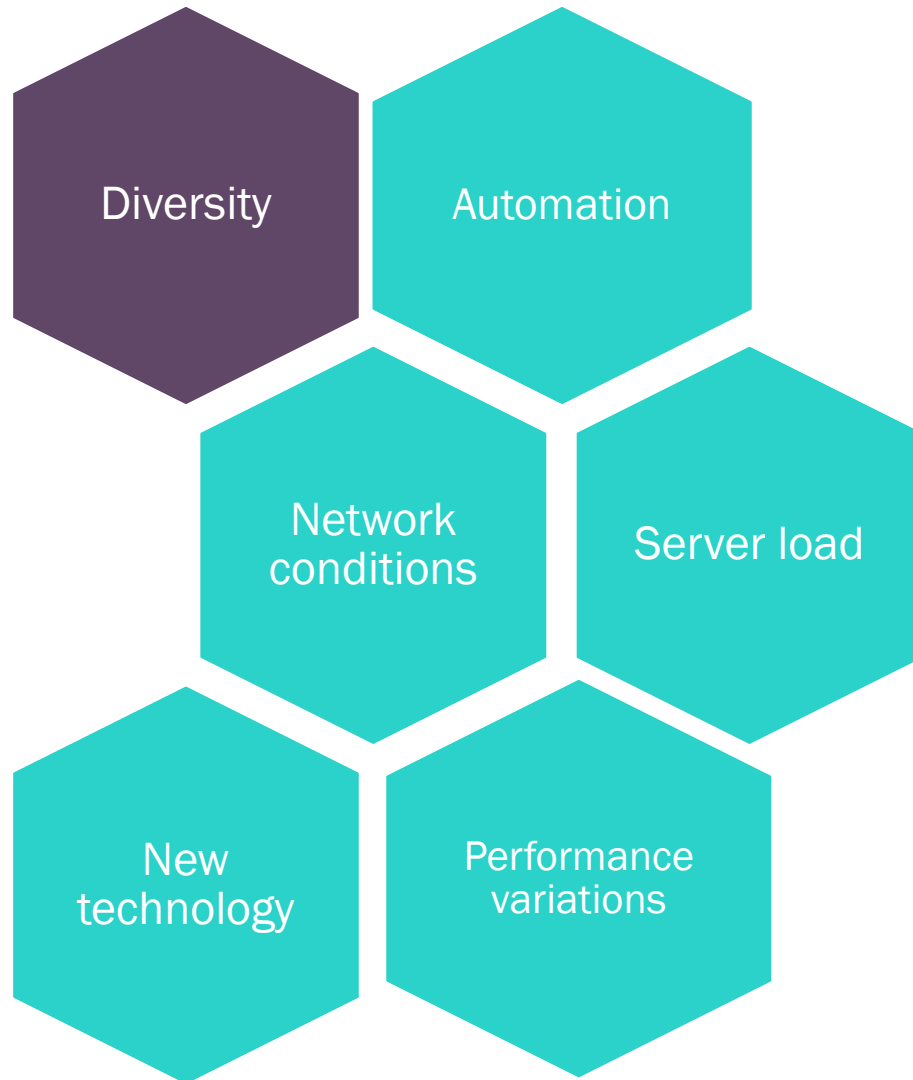
Back-end

Complete end-user response time

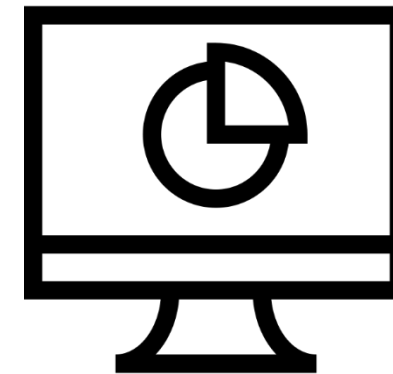
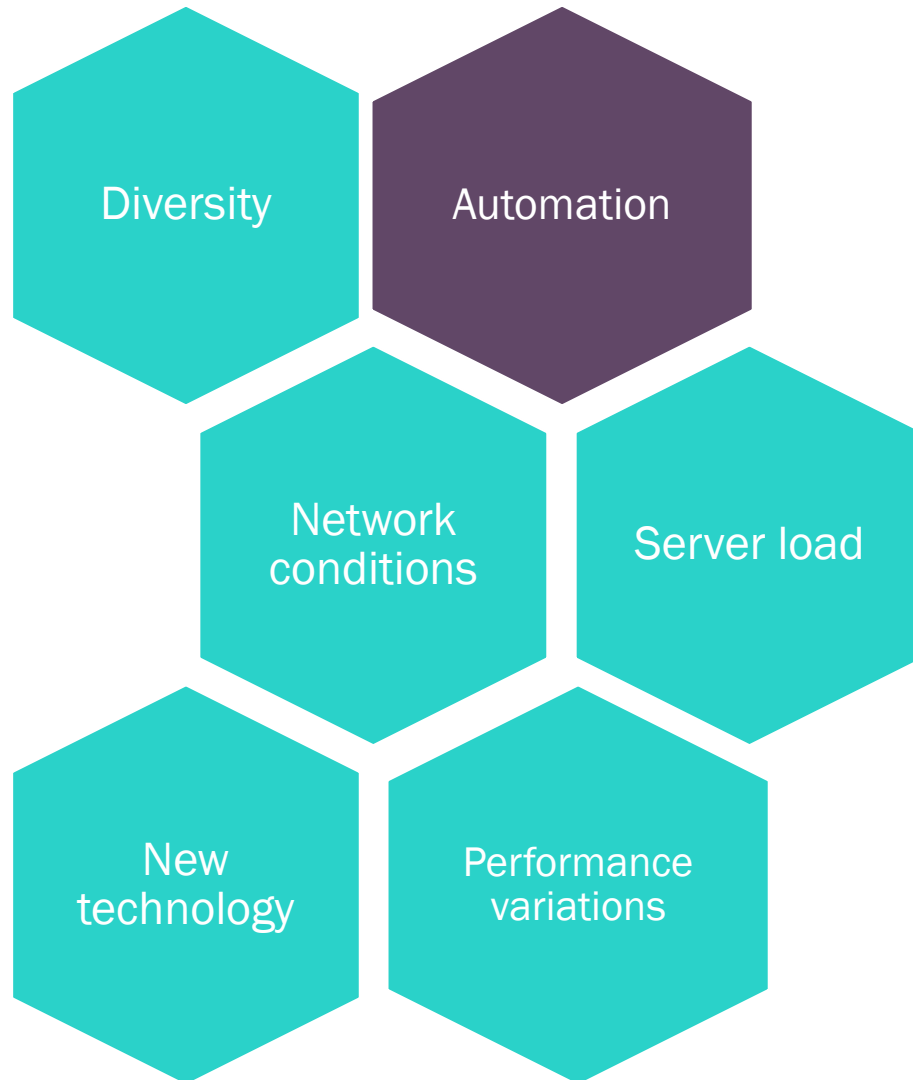
It is not an easy task...



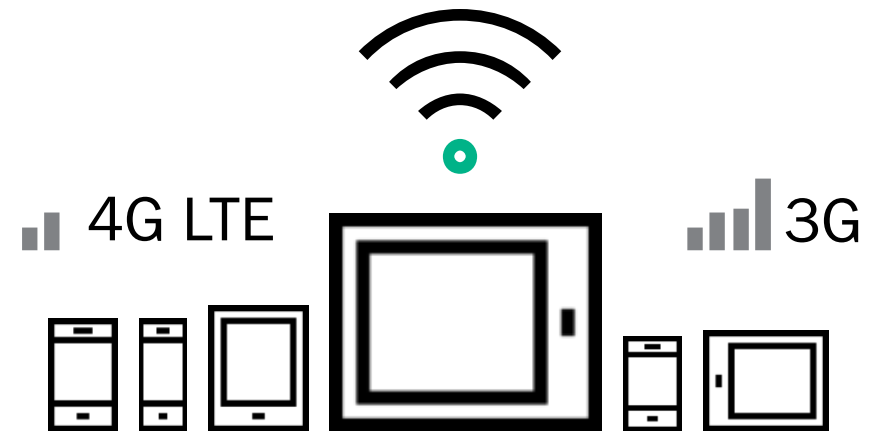
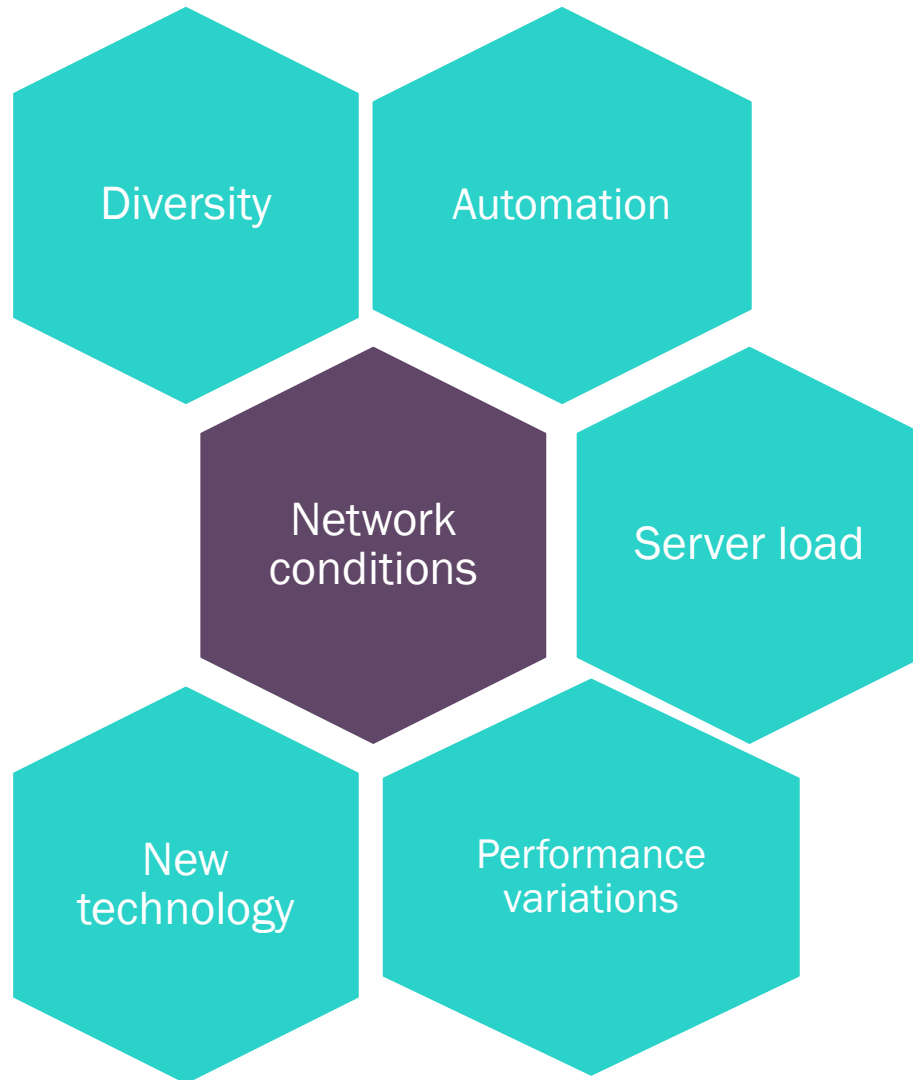
Challenges in mobile performance testing



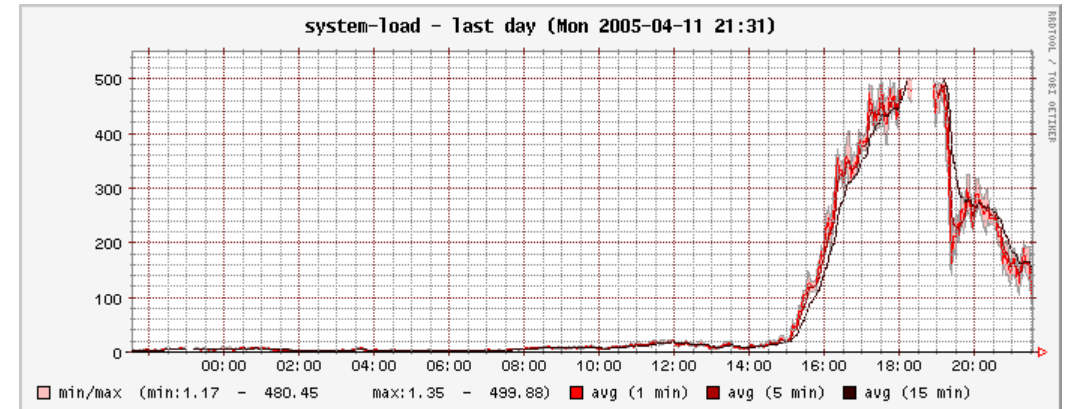
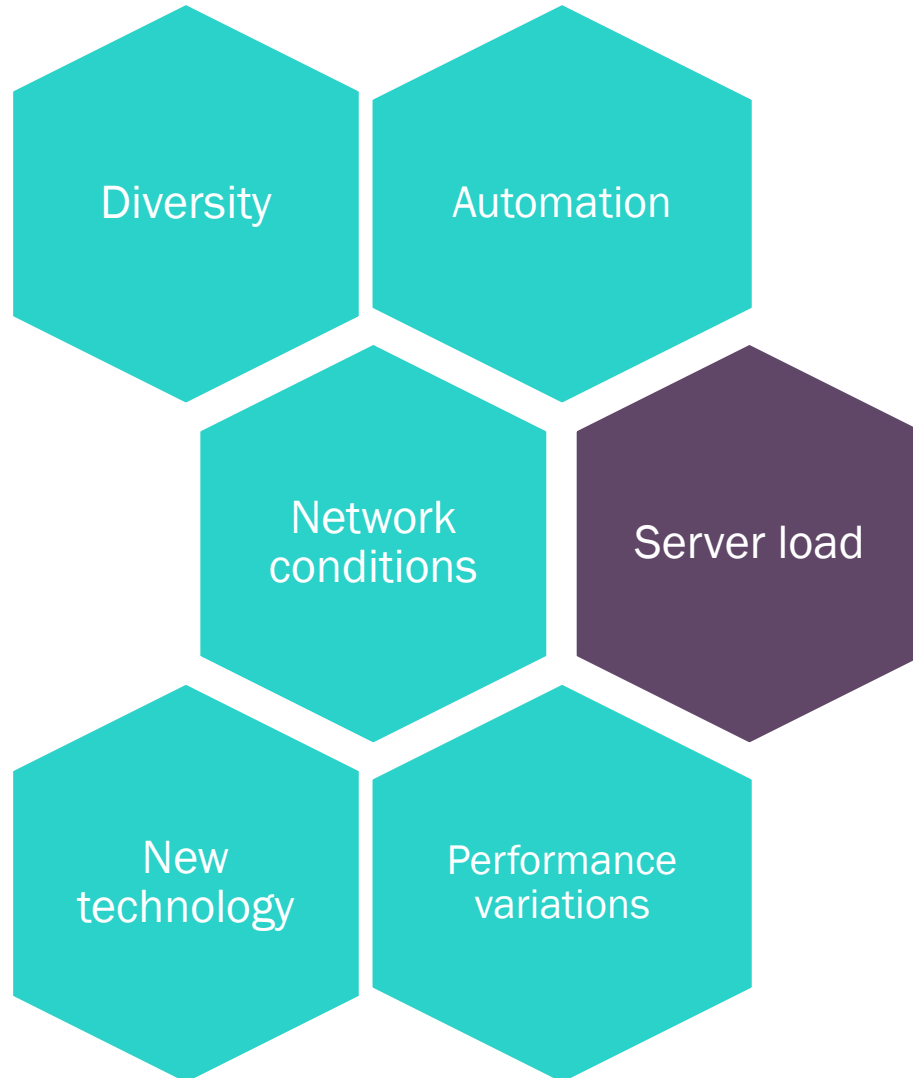
Challenges in mobile performance testing



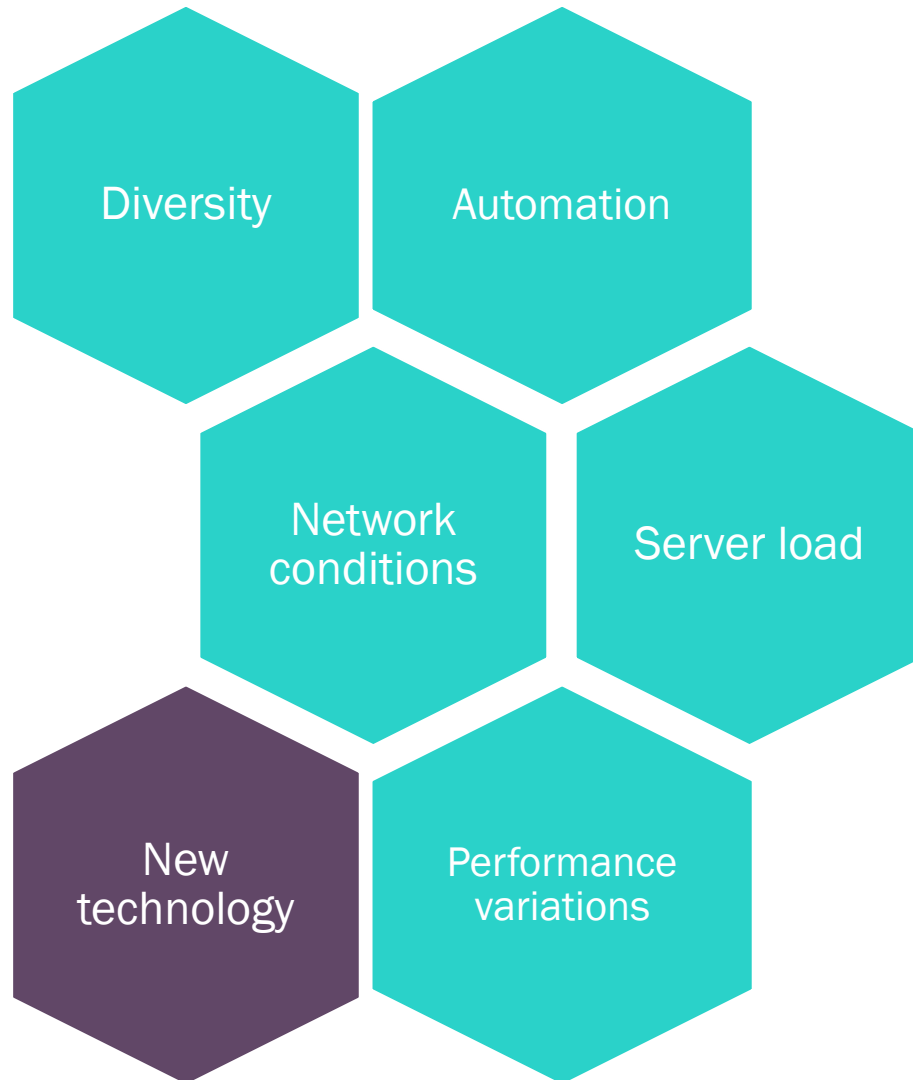
Challenges in mobile performance testing



Challenges in mobile performance testing

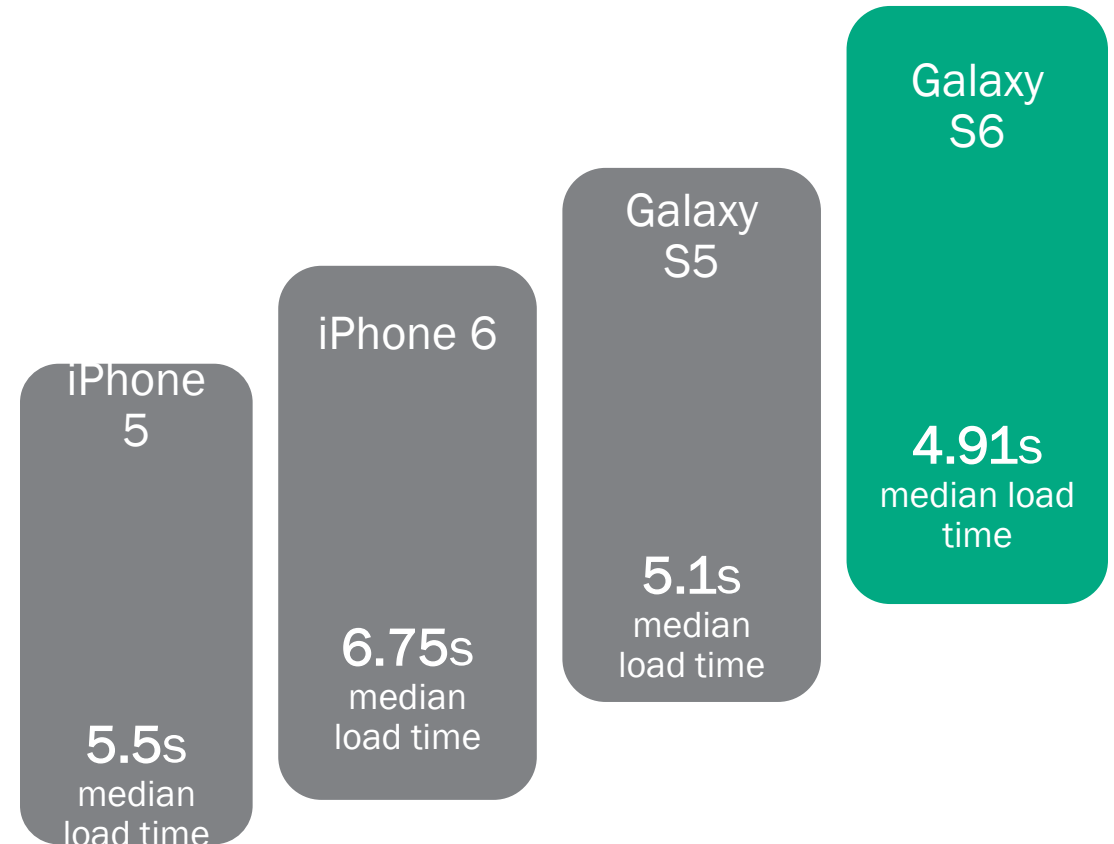
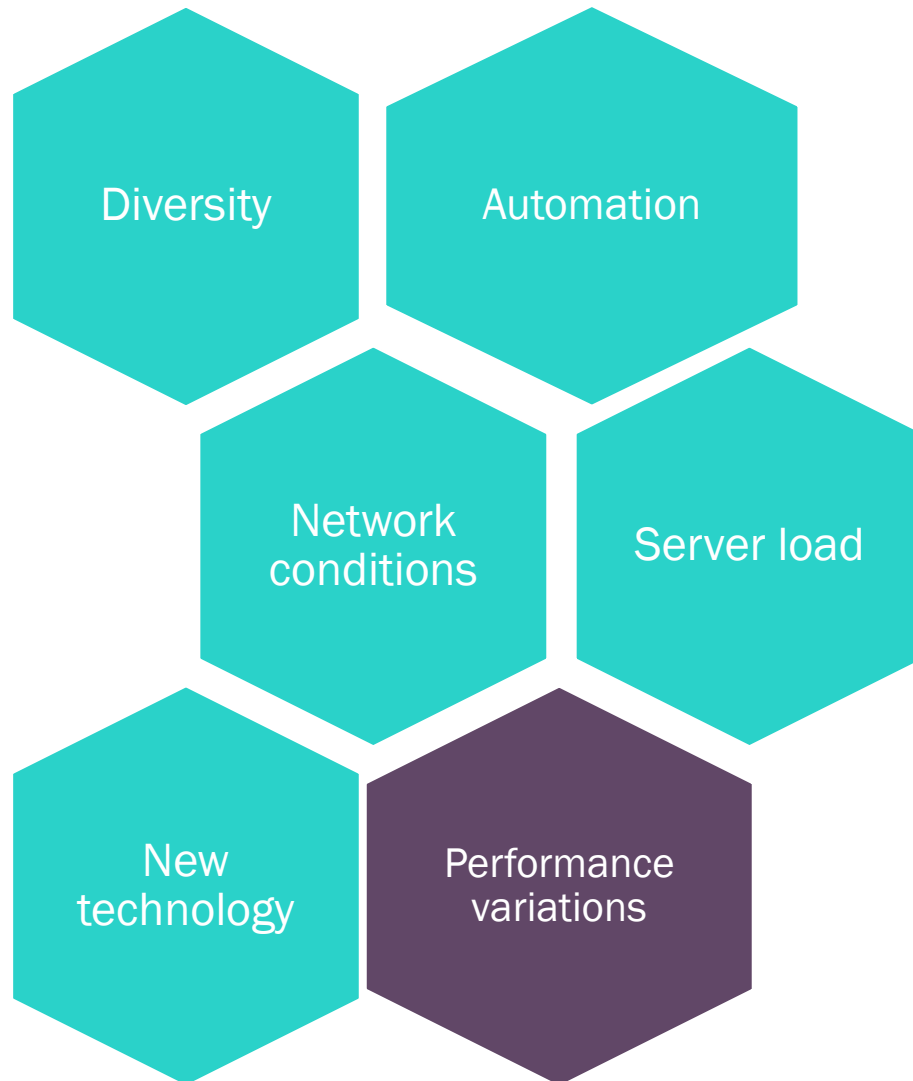


Challenges in mobile performance testing



The future is landing

Challenges in mobile performance testing



Mobile web vs. native vs. hybrid apps



Mobile web, native, and hybrid apps have different infrastructure.

The trade-offs using emulators

Pros

- Speed
- Control
- Convenience
- Cost
- Efficiency

Cons

- Power and battery
- Performance
- User experience
- Device-specific flaws and bugs



Mobile performance explained

How to select a script type for mobile applications in HPE LoadRunner

Mobile application - HTTP/HTML

Develop scripts using mobile devices or device emulators communicating with servers over HTTP.

Client application: either a **browser based** or **native** application.

TruClient – Mobile Web

Record user activity in browser-based mobile applications using TruClient technology.

Client application: **browser based** mobile version of a web site.

TruClient - Native Mobile

Record user activity in native and hybrid mobile applications using TruClient technology

(Requires HPE Mobile Center).

Client application: **native** or **hybrid** mobile application.



Mobile application - HTTP/HTML

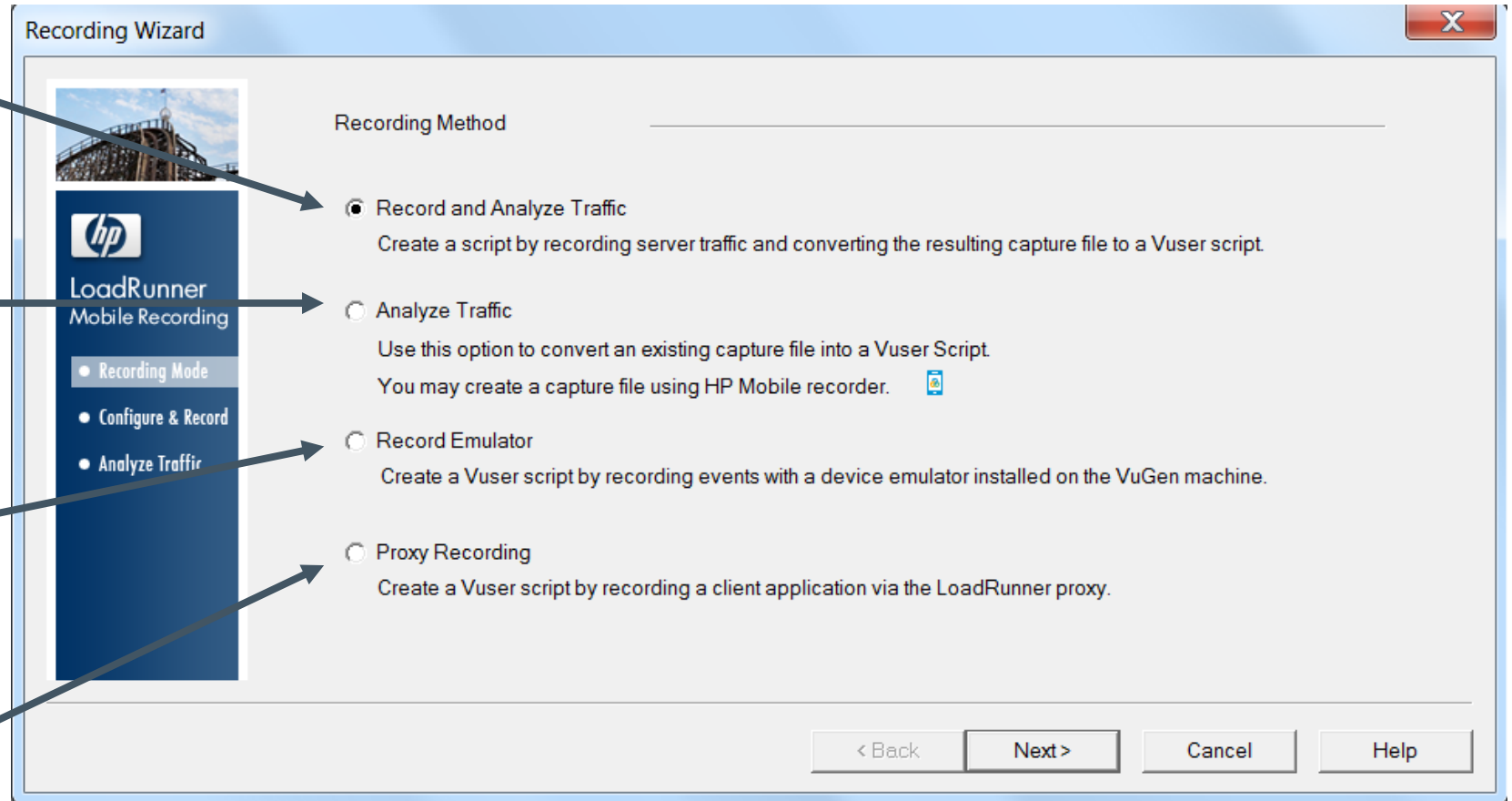
Recording methods

VuGen connect to **agent** and generate script based on captured traffic

Script generation based on existing **.pcap** network traffic file

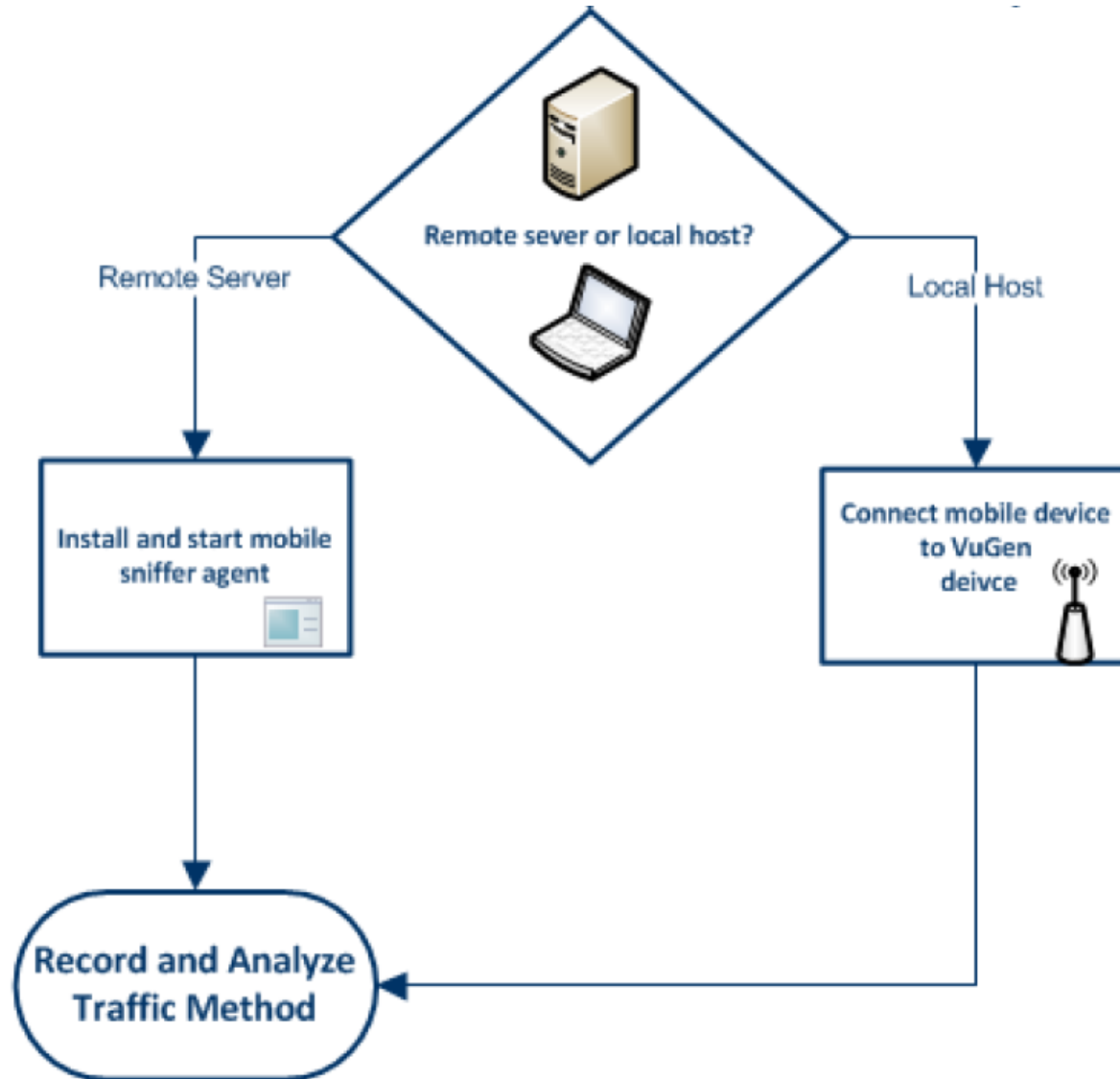
VuGen record against supported mobile **emulator**

VuGen listening to specified **proxy** and port and record activities remotely



Option 1: record and analyze traffic

How it works



Option 1: record and analyze traffic

VuGen and Agent communication

Recording Wizard

Select the network interface to be recorded

Setup connection between VuGen and agent

1. Mobile sniffer agent location

Host URL: Port:

Note: You must launch the agent on the remote machine before connecting

2. Mobile sniffer agent configuration

Record network interface:

Record into action:

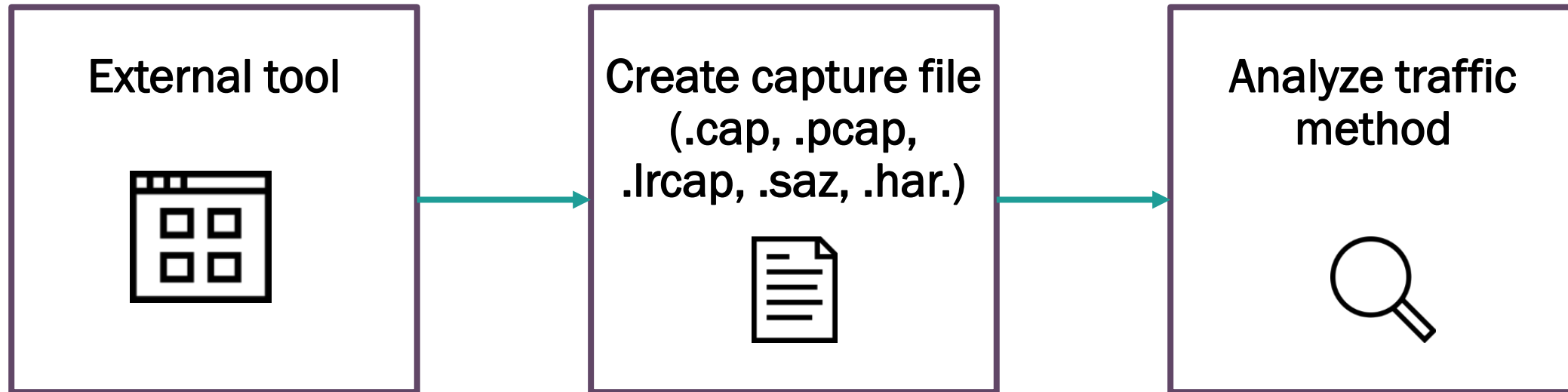
3. Recording

Start and stop the agent trapping activities

< Back Next > Cancel Help

Option 2: analyze traffic

How it works



Option 2: analyze traffic

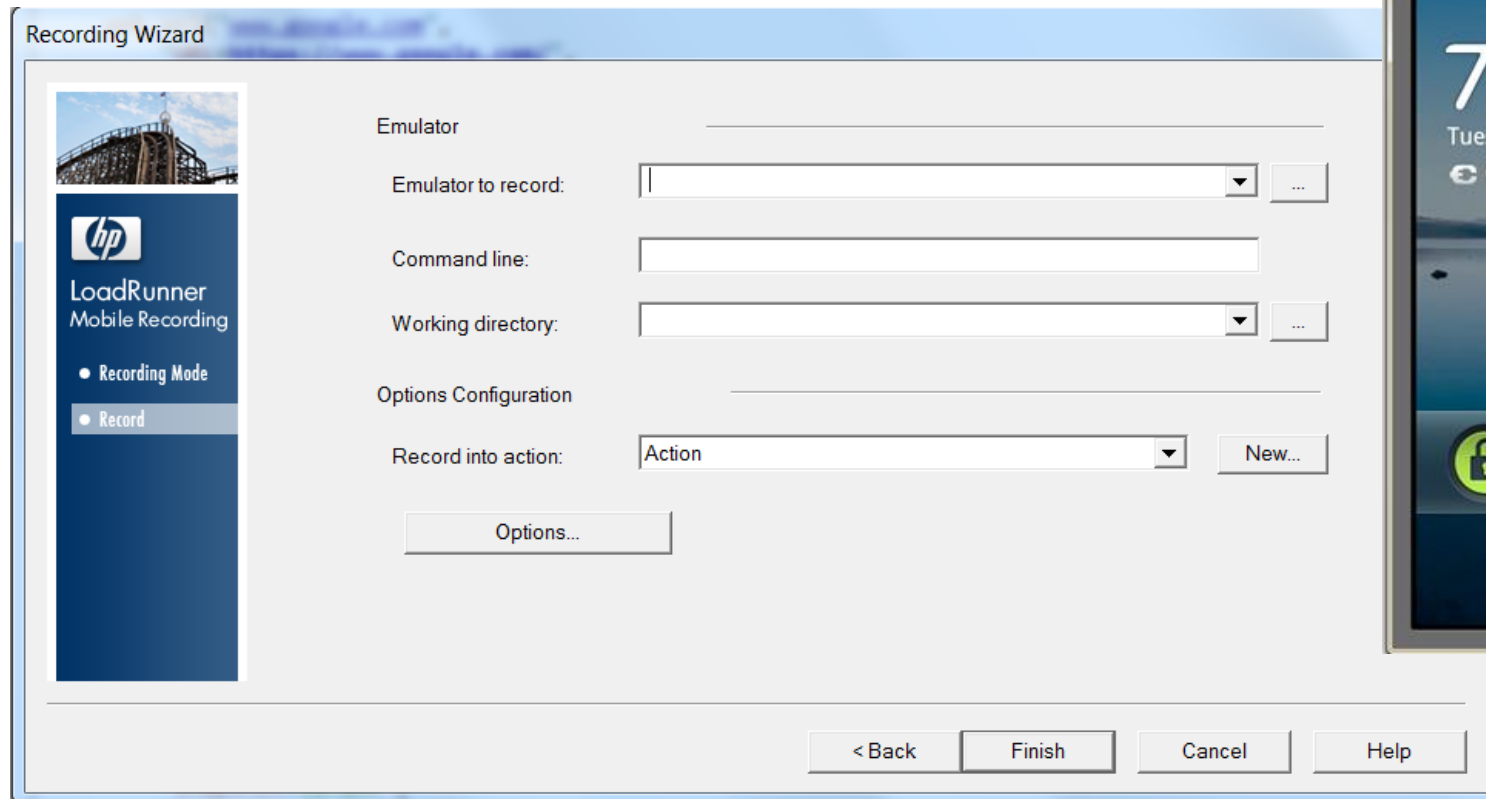
Options

Select the .pcap file to generate script from

Specify filter using client or server identify

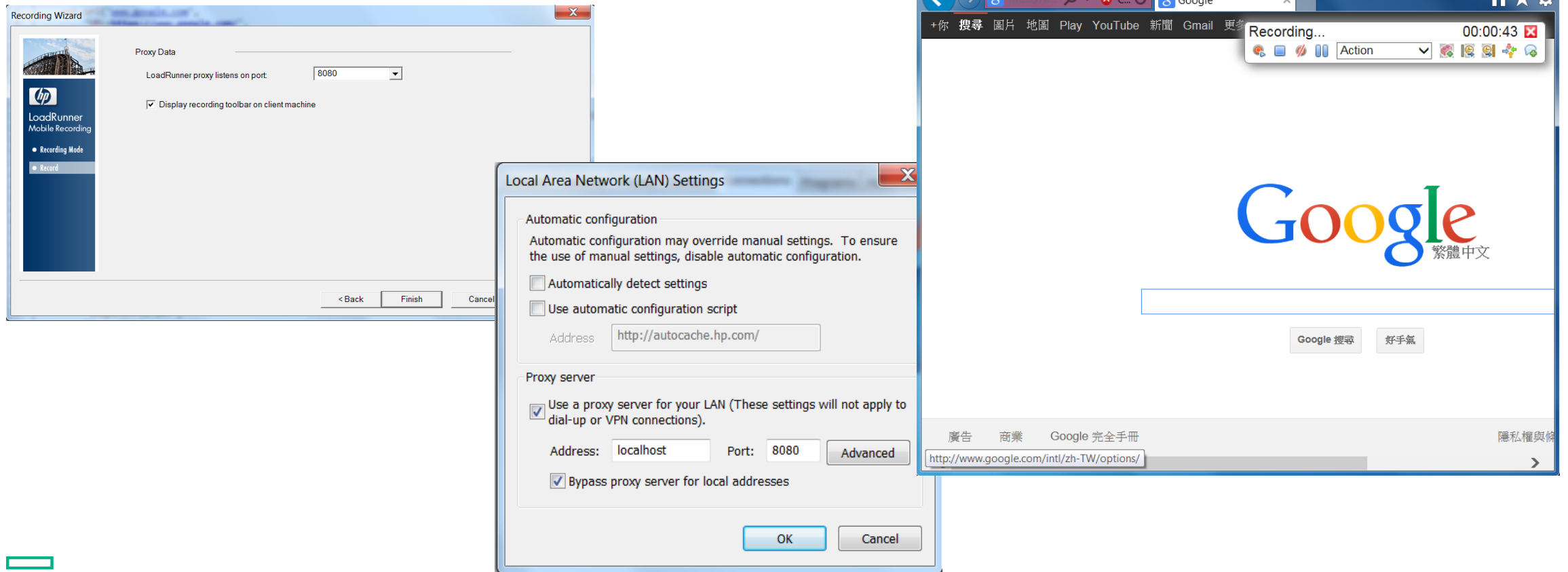
Option 3: record emulator

Point to Windows-based emulator applications



Option 4: proxy recording

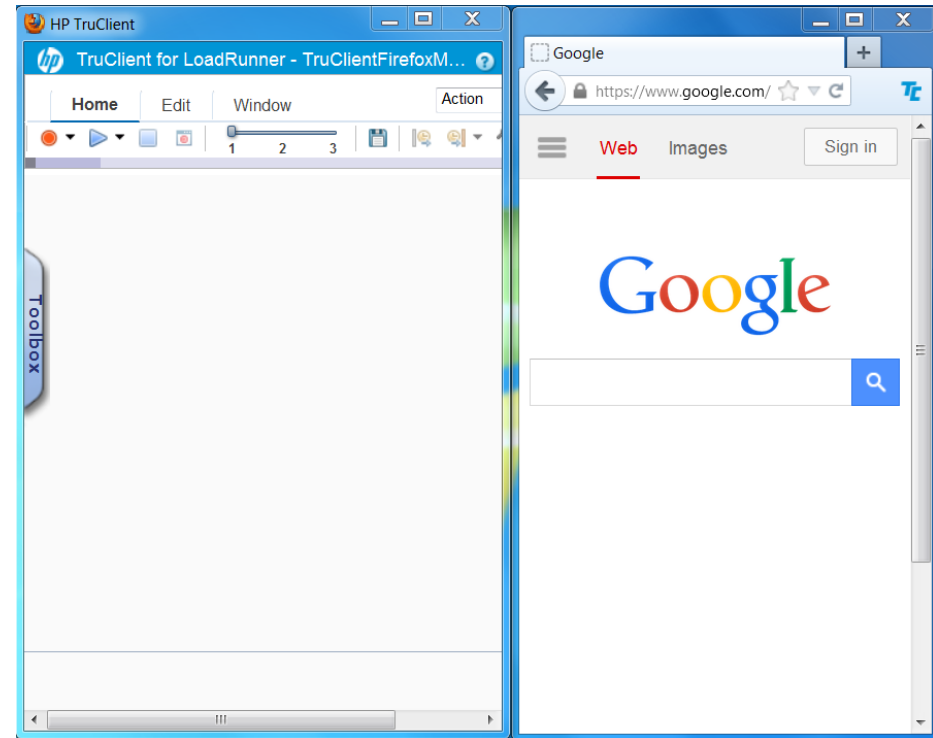
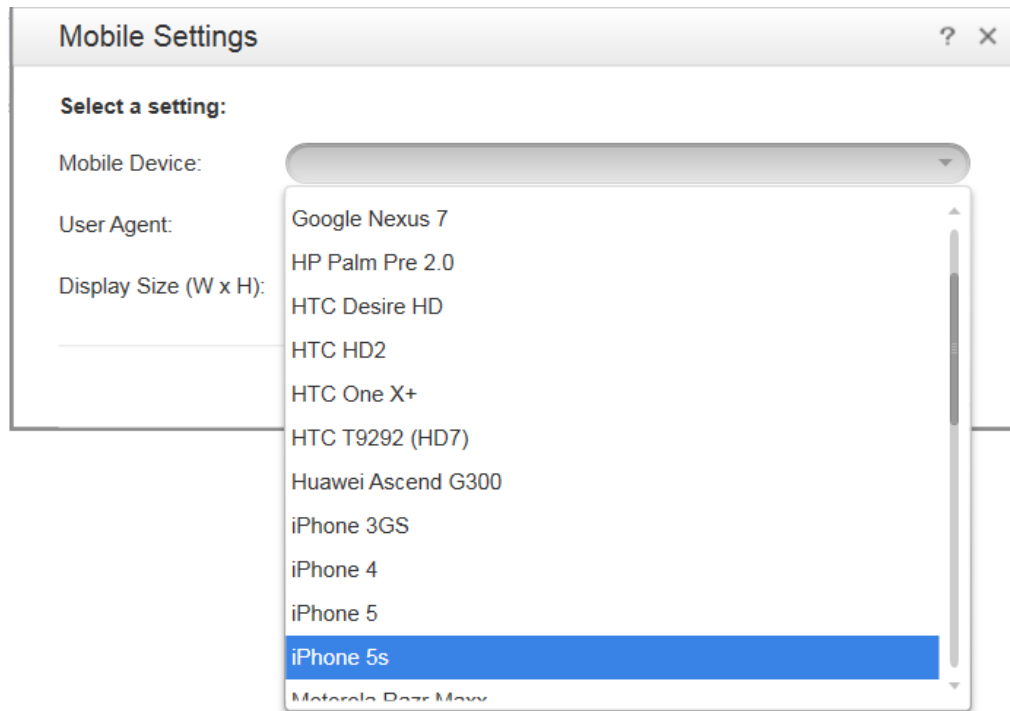
- Configure VuGen to listen to recording machine at a specific port
- Set browser to go through target proxy to the AUT



TruClient – Mobile Web

TruClient – Mobile Web

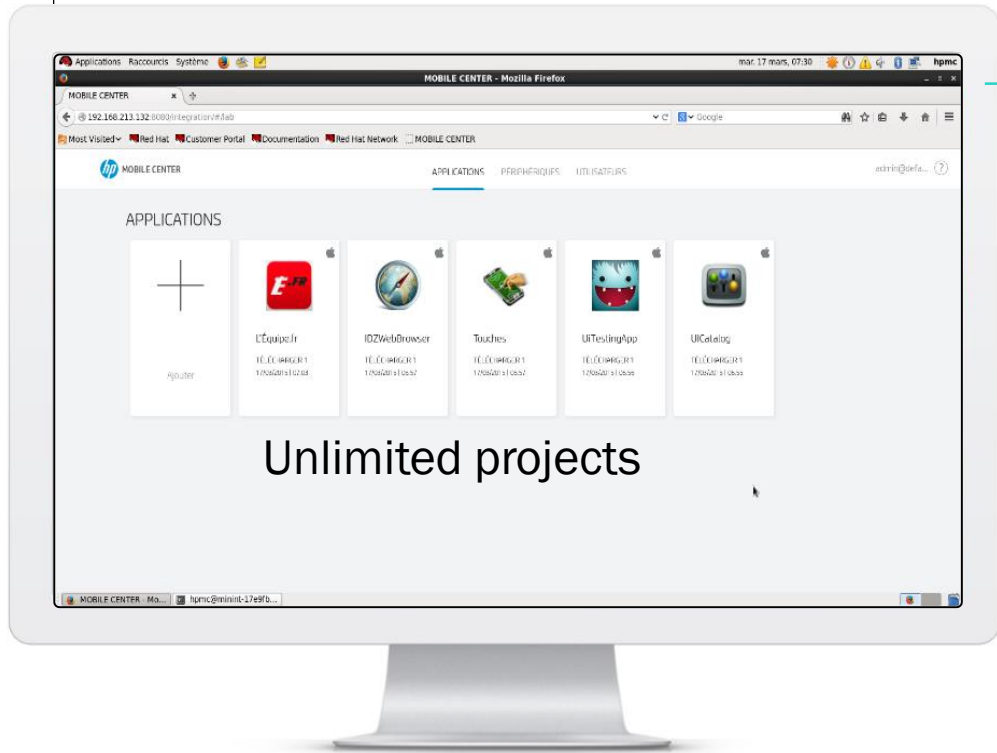
- Solution based on TruClient technology
- Emulate different mobile devices using Firefox
- Measure end-to-end performance experience



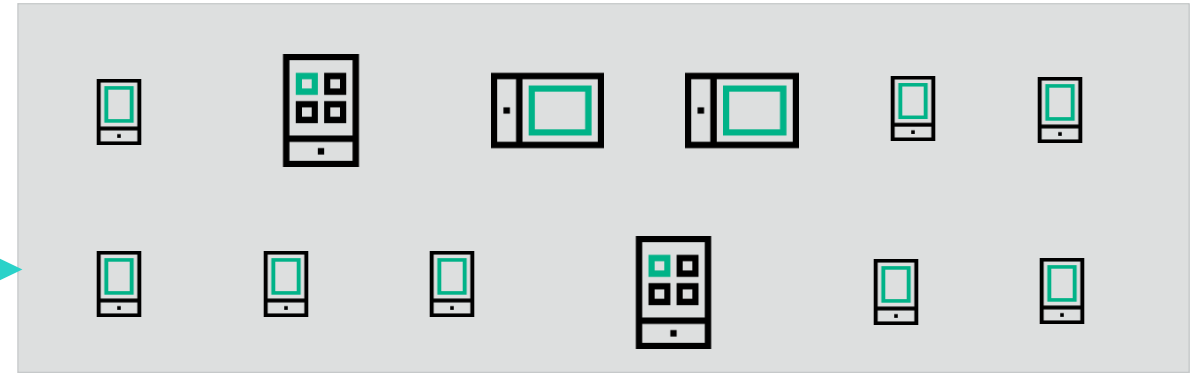
Load Runner TruClient – Native Mobile

Test on real devices

HPE Mobile Center Manage your lab

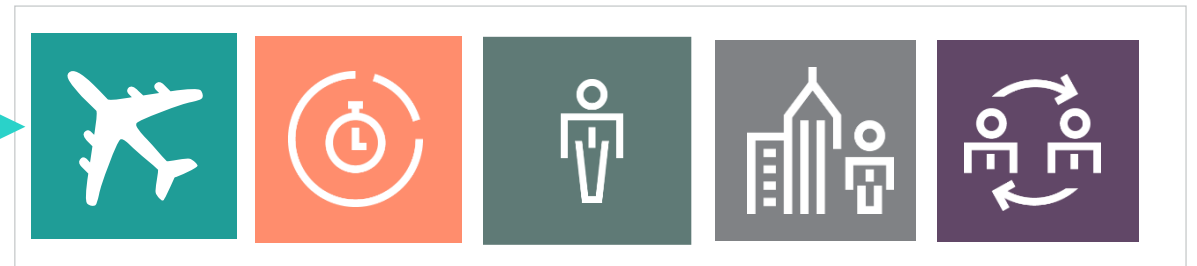


Manage devices and OS



On-premise, iOS and Android, plug and play

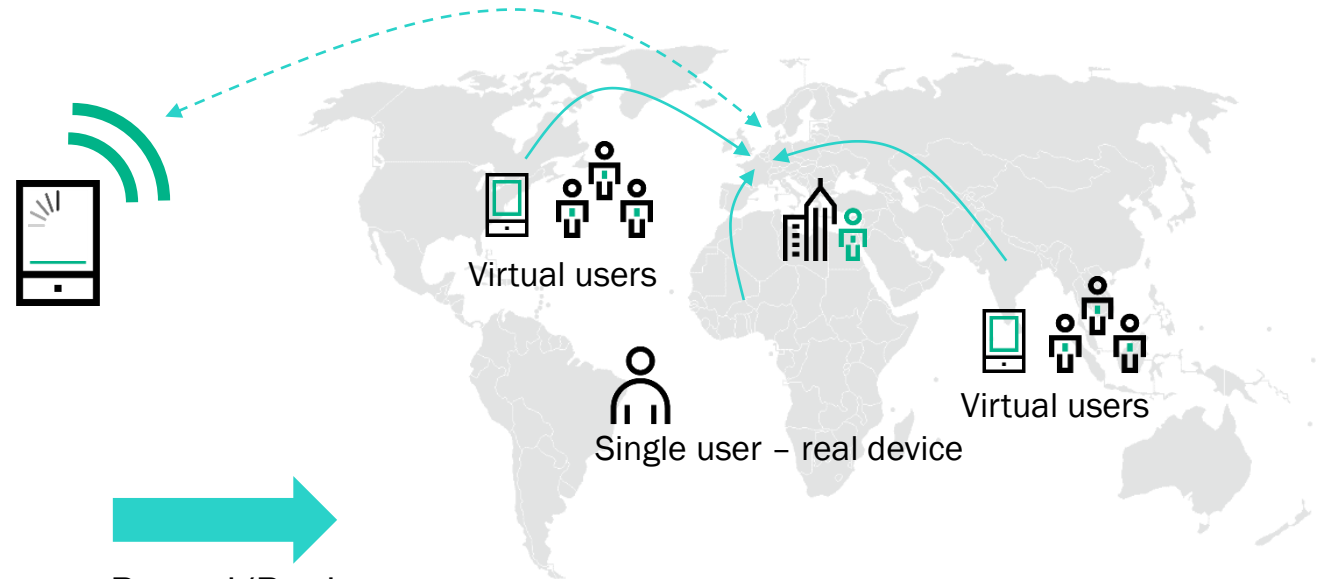
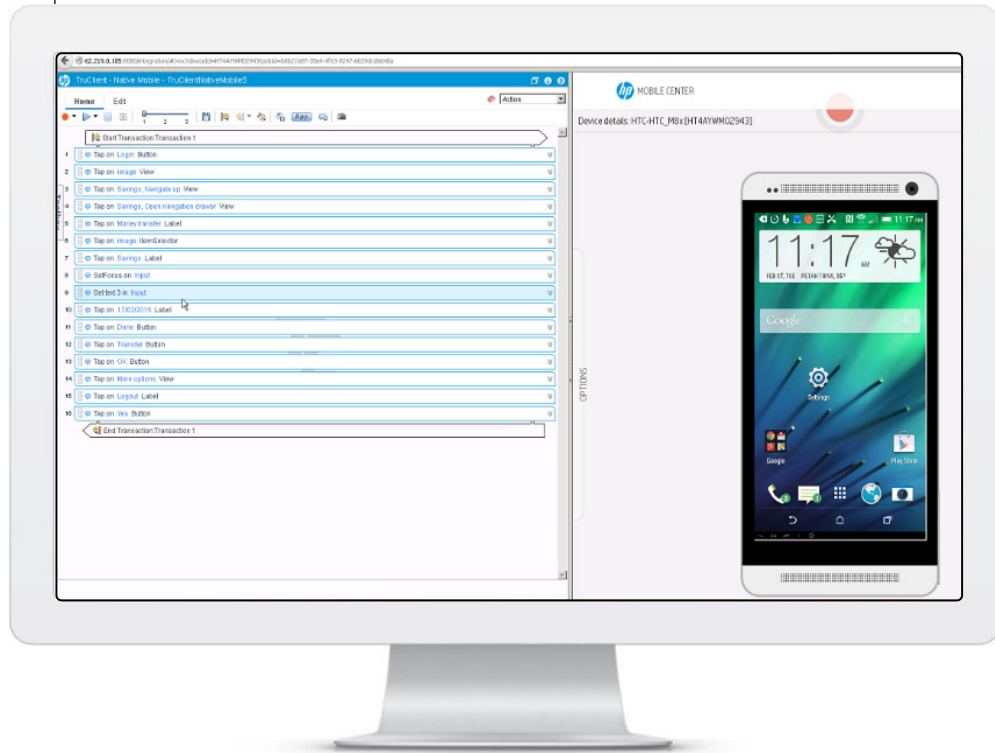
Manage apps



Distribute, install, remove, start, stop

Measure the *real* user experience

HPE LoadRunner and HPE Mobile Center
For web, hybrid and native apps



Record/Replay

Scriptless via VuGen technology

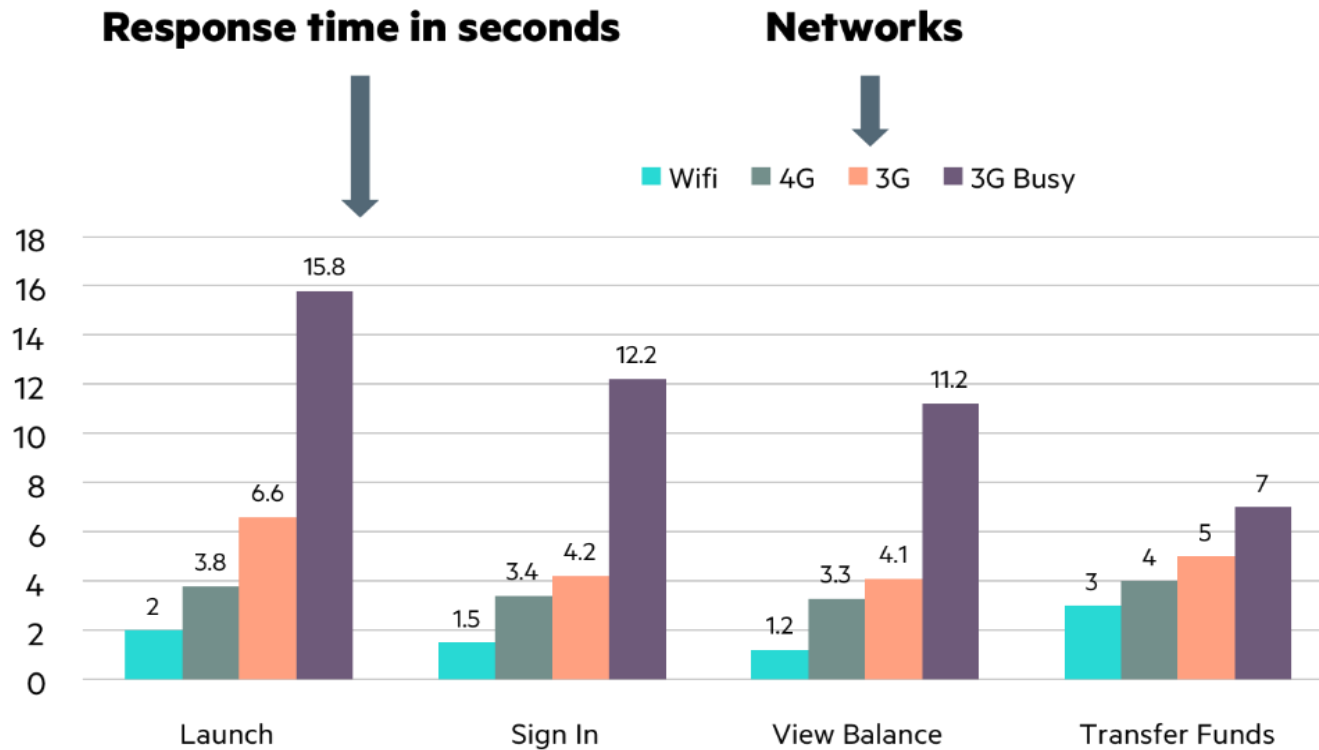
Includes real network conditions

Understanding network conditions for mobile apps

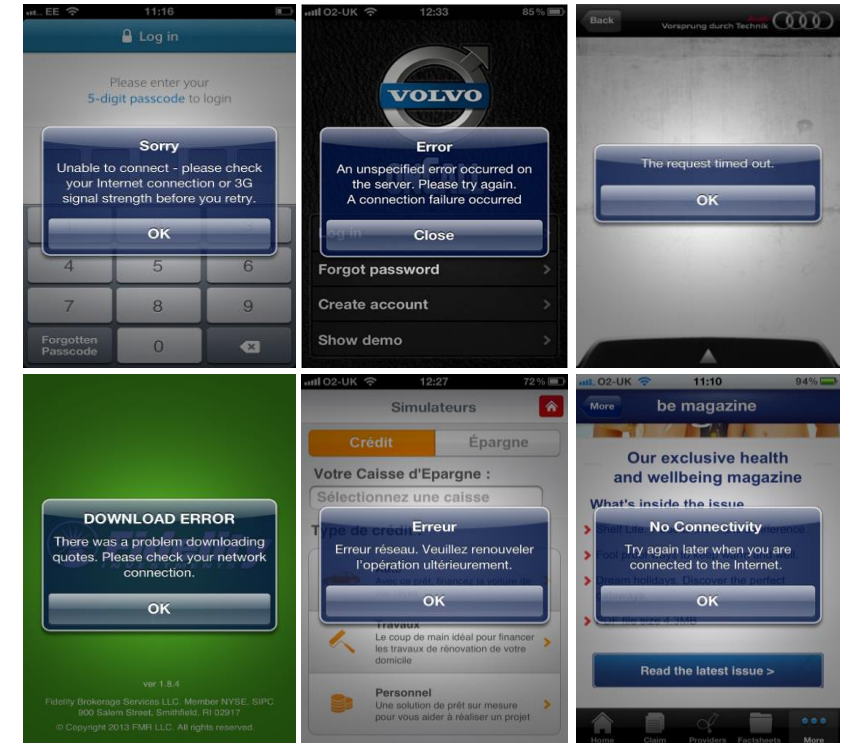
How networks impact mobile performance

Network conditions might have a huge impact on user experience

TRT increase



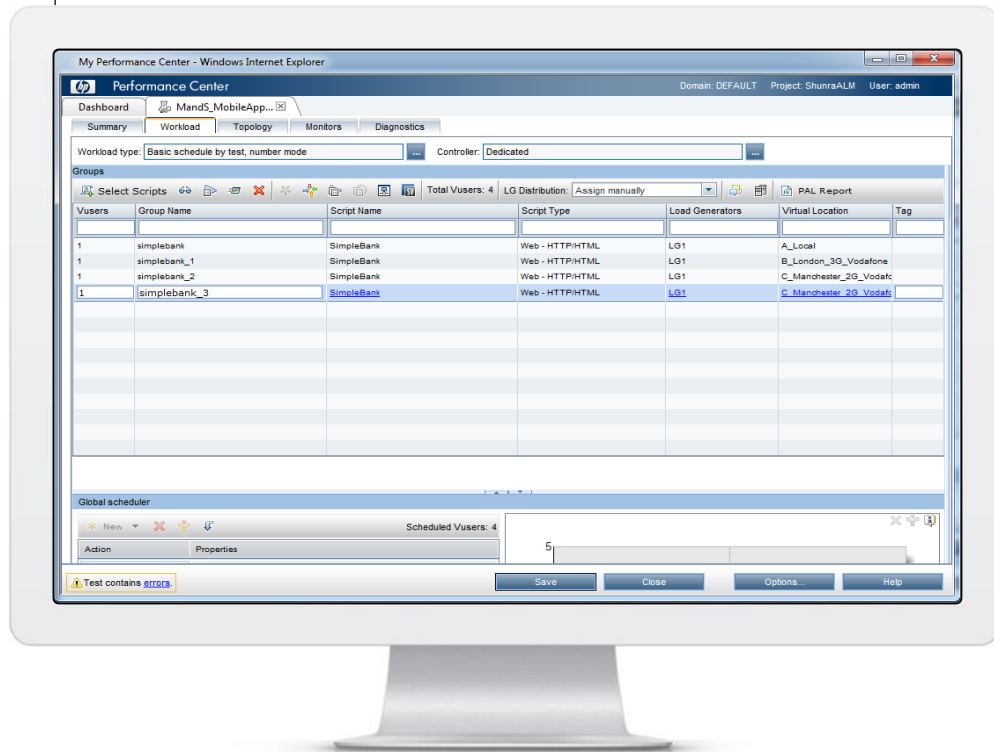
Errors



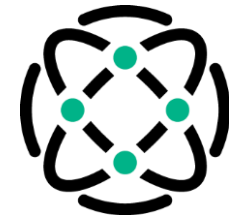
Virtualize network conditions

HPE Network Virtualization

Optimize your applications prior to deployment



2.5G/3G/4G/WIFI emulation



- Discover and capture production network conditions
- Emulate and recreate real-world network conditions in the lab
- Identify the attributes that impact Performance

Demo

Thank you

www.hpe.com/software/mobileload

Upcoming Performance Engineering Events

- “Performance Engineering as a Competitive Differentiator”
 - SIG Webinar 5/11/16 11:00 am EST
 - Register here: <http://www.vivit-worldwide.org/events/EventDetails.aspx?id=808996&group=>
 - Our expert panel will collaboratively discuss how the capabilities of Performance Engineering have been recognized as a significant competitive differentiator across all: geographies, industries and market
- Vivit Deep Dive Session at HPE Discover on HPE LoadRunner and Network Virtualization
 - Monday, June 6 at 1:00 pm PDT
 - Register here: <http://www.vivit-worldwide.org/events/EventDetails.aspx?id=805468&group=>





Hewlett Packard
Enterprise

Discover 2016

Las Vegas June 7-9



Discover 2016 is Hewlett Packard Enterprise's must-attend global customer and partner event. Why attend?

- Explore how Hewlett Packard Enterprise is delivering IT solutions for the New Style of Business to help you go further, faster
- Network with 10,000+ attendees, including C-level executives, IT directors, engineers and HPE experts
- Find content for you, choosing from our broad array of technical and business sessions
- Explore the latest innovations from HPE in the Transformation Zone
- Find thousands of experts on hand to answer your questions and address your challenges
- Exchange ideas, information and best practices with other IT professionals and industry leaders

Register Now and receive your member discount with this

Vivit registration link:

<https://www.hpe.com/events/discoverSWVivit>



Thank you

- Complete the short survey and opt-in for more information from Hewlett Packard Enterprise.

www.hpe.com

www.vivit-worldwide.org

