

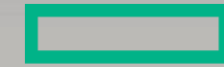
Building an Autonomous IT Operations using HPE Operations Bridge

December 13, 2016

Today's Speaker:



Ian Bromehead
Sr. Product Marketing Manager
Hewlett Packard Enterprise



**Hewlett Packard
Enterprise**

YOUR INDEPENDENT SOFTWARE USER COMMUNITY

The webinar will begin shortly.



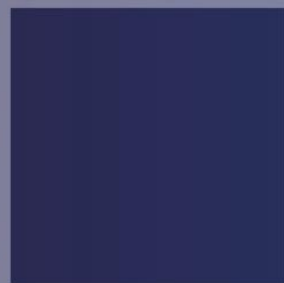
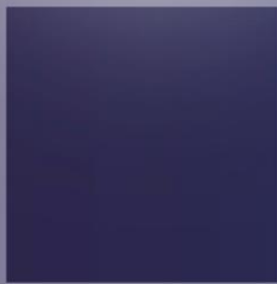


vivvit

Discover the independent HPE software user community where you can share, collaborate, exchange, and grow



COMMUNITY

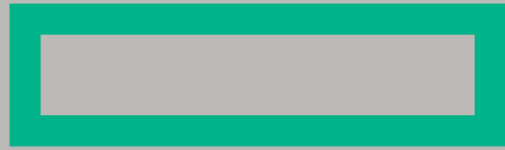


Building an Autonomous IT Operations using HPE Operations Bridge

December 13, 2016



Brought to You By



Hewlett Packard Enterprise

YOUR INDEPENDENT HPE SOFTWARE USER COMMUNITY



Hosted By



Rocky Pisto
Vivit BSM SIG Leader
Vivit Chicago, Indiana, Ohio, Michigan and Kentucky LUG Leader

YOUR INDEPENDENT HPE SOFTWARE USER COMMUNITY



Today's Speaker



Ian Bromehead
Sr. Product Marketing Manager
Hewlett Packard Enterprise

YOUR INDEPENDENT HPE SOFTWARE USER COMMUNITY



Webinar Housekeeping



Slide 1 of 2

LOGO/PICTURE

Q&A

Ask a question

Ask

DOWNLOAD FILES

File Name	Size	
MAINHPPresentation.p...	1947 KB	

Folder: All Files

© Copyright 2016 Vivit Worldwide

YOUR INDEPENDENT HPE SOFTWARE USER COMMUNITY

ADVOCACY · COMMUNITY · EDUCATION

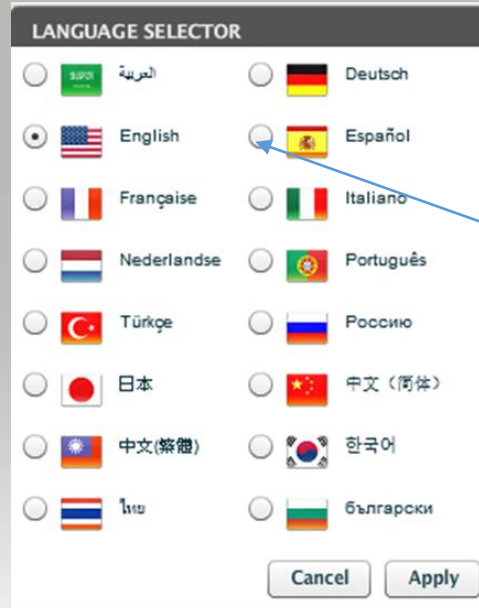
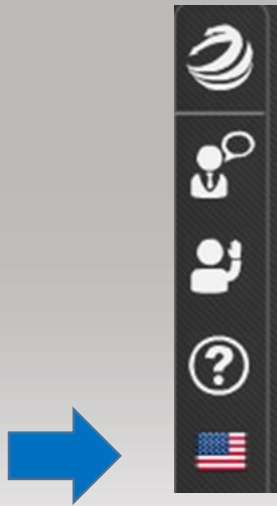
- This “LIVE” session is being recorded
- Recordings are available to all Vivit members
- To enlarge the presentation screen, click on the rectangle in the upper right hand corner of the Presentation pane

YOUR INDEPENDENT HPE SOFTWARE USER COMMUNITY



Webinar Control Panel

- Session Q&A:
Please type questions in the Q&A pane and click on “Ask”
- Choose the language in which you would like to ask your questions





**Hewlett Packard
Enterprise**

Building autonomous IT Operations using HPE Operations Bridge

Ian Bromehead, Sr Product Marketing Manager

December 2016



Agenda



Industry trends



HPE's Solution



Product News



Demo

Outside Forces Are Disrupting Businesses and Government

The Idea Economy

Turning ideas into new products or services has never been easier



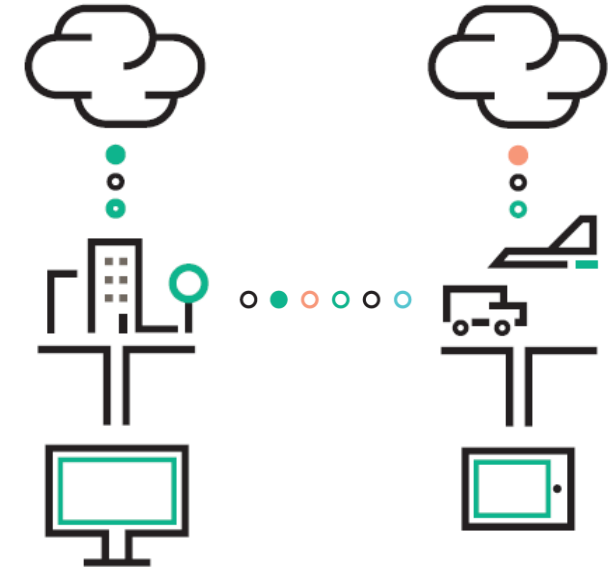
New, Disruptive Business Models

No business, industry or government is safe



Internet of Things, Explosion of Devices

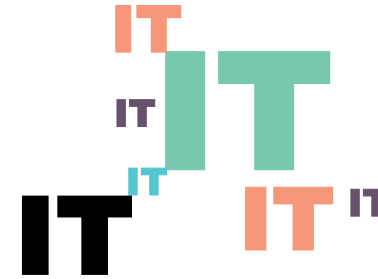
Cloud is redefining how applications and devices are connecting & providing new value



Forces requiring evolution of IT



Technology is
business strategy



Expanding IT
expectations rapidly



DevOps driving
culture shifts



Shadow IT is
everywhere

Yet Problems remain identical



Ensure business
Continuity



Optimize cost
of delivery

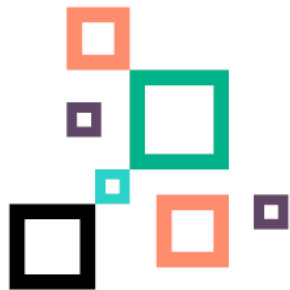


Accelerate
delivery

HPE Operations Bridge - Autonomous Operations through a business lens



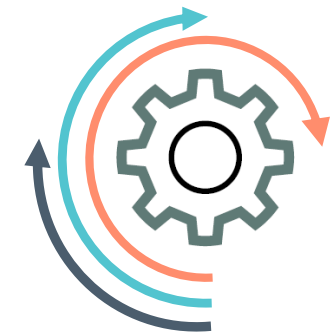
Provide Real time biz insight into IT



Consolidate all data in a central place



Use Machine Learning & Big Data



Autonomous Adoption via automation

Operations Bridge – “CNN for IT”

Visualizations for all SMEs and Line of business

Simple and Colorful

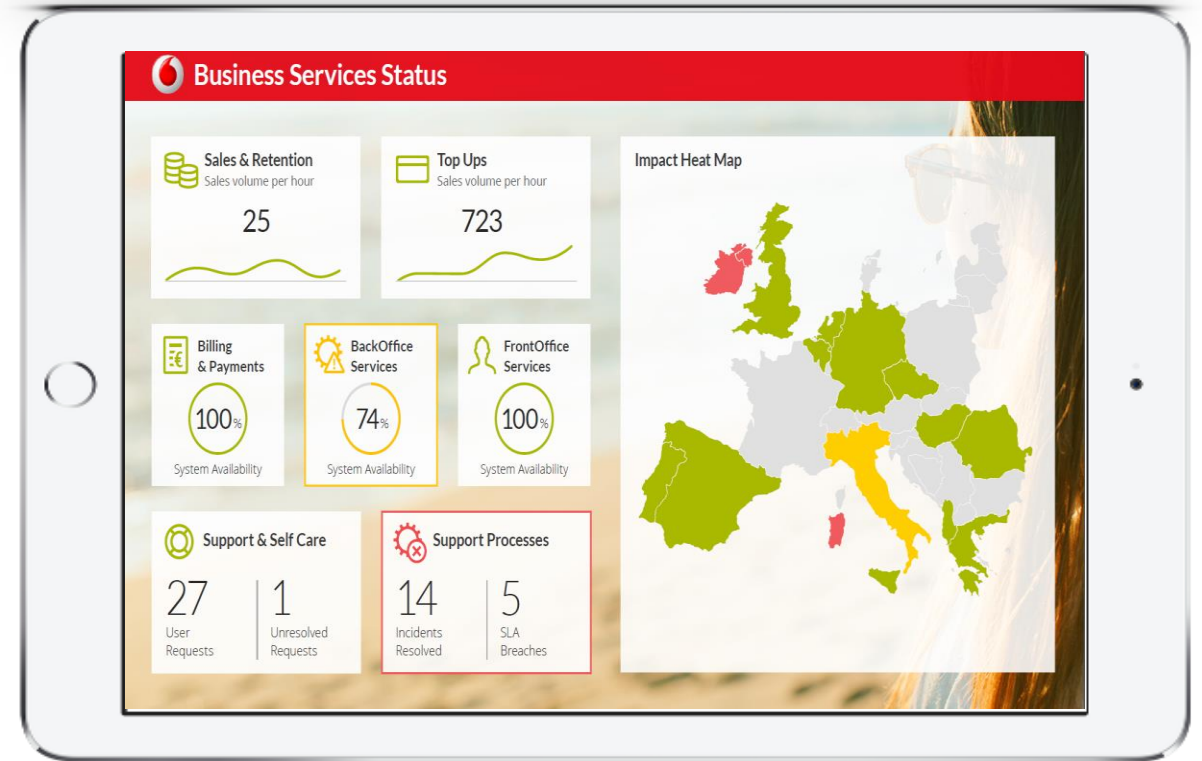
Design in minutes using standard office tools
Plugin your own graphics

Flexible and Secure

Show status, metrics, RSS, and
video streams, built-in robust security

Anywhere, anytime, any device

Access information in real time
from popular browsers on any device



Operations Bridge - Central Monitoring solution

Single Pane of Glass

Sense the state of your IT Environment from Metal to App

Dynamic Models

Visualize event impact in the context of Application and infrastructure run-time models

Automate Resolution

Take actions on events, automate routine workflows centrally



Performance Mgmt.

Unified cloud scale performance with real time visibility

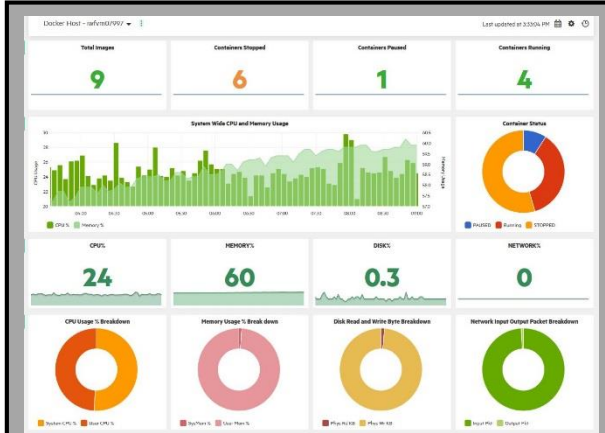
Event Correlation

event reduction to focus on the right issues using multiple Correlation techniques

Integrations

Extensive integrations with 3rd party monitoring and service mgmt. solutions

Operations Bridge - Built on Big Data Paradigms

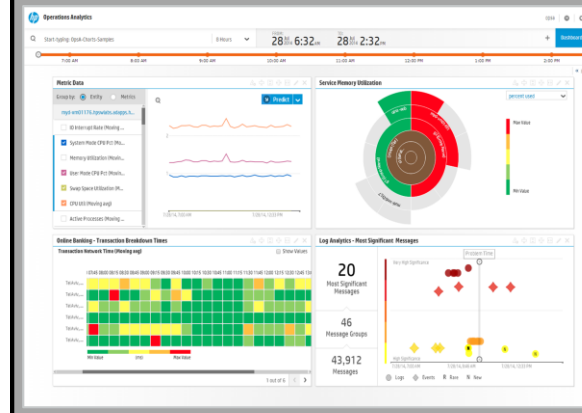
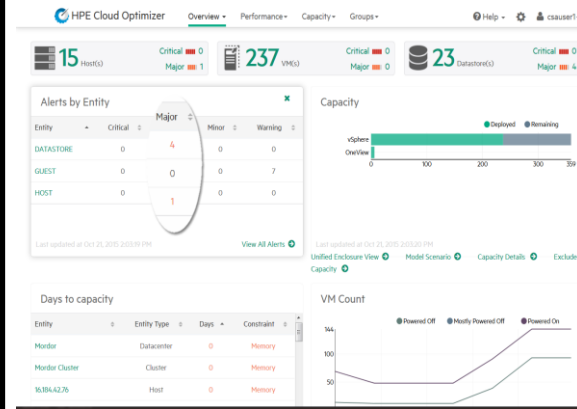


Sense

Out of box big data sensors, agents, connectors and integrations to provide real time insight into your hybrid IT infrastructure

Optimize

Big data capacity planning and optimization with advanced what-if modeling

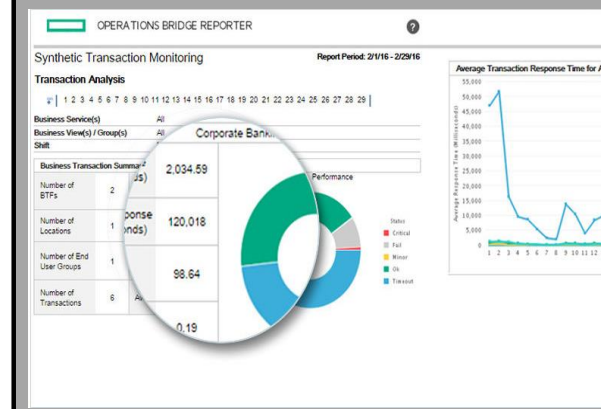


Analyze

Big data analytics leveraging multiple data types for troubleshooting, search, prediction, anomaly detection and alerting

Report

Big data model driven reporting and forecasting with more than 250+ Out of box reports



Operations Bridge - Adapt environment & your monitoring

Automatic Discovery

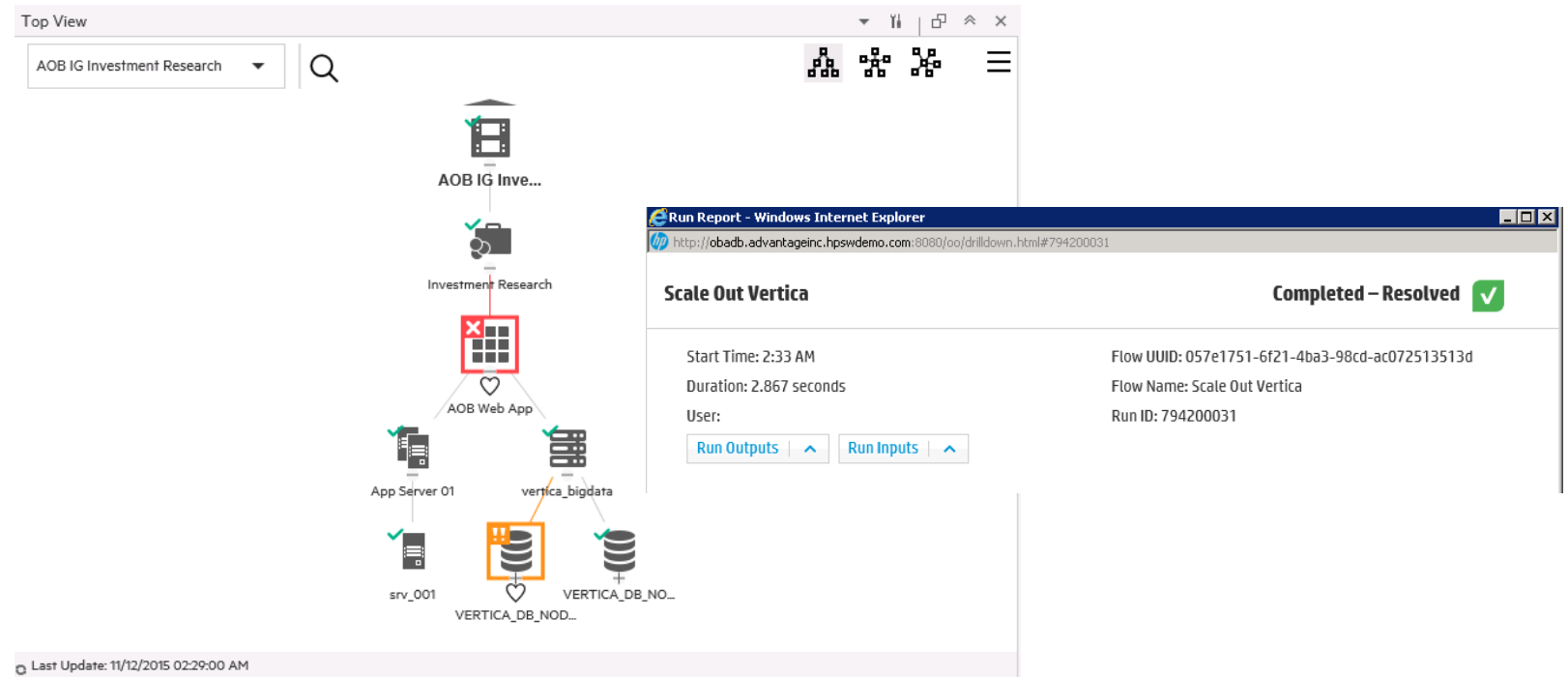
Gain a real time understanding of application service models

Automatic Monitoring

Adjust monitoring and sensing policies based on your changing environment

Automatic Remediation

Drive automated remediation actions to aim for a total lights out operations



Cloud Monitoring with Operations Bridge

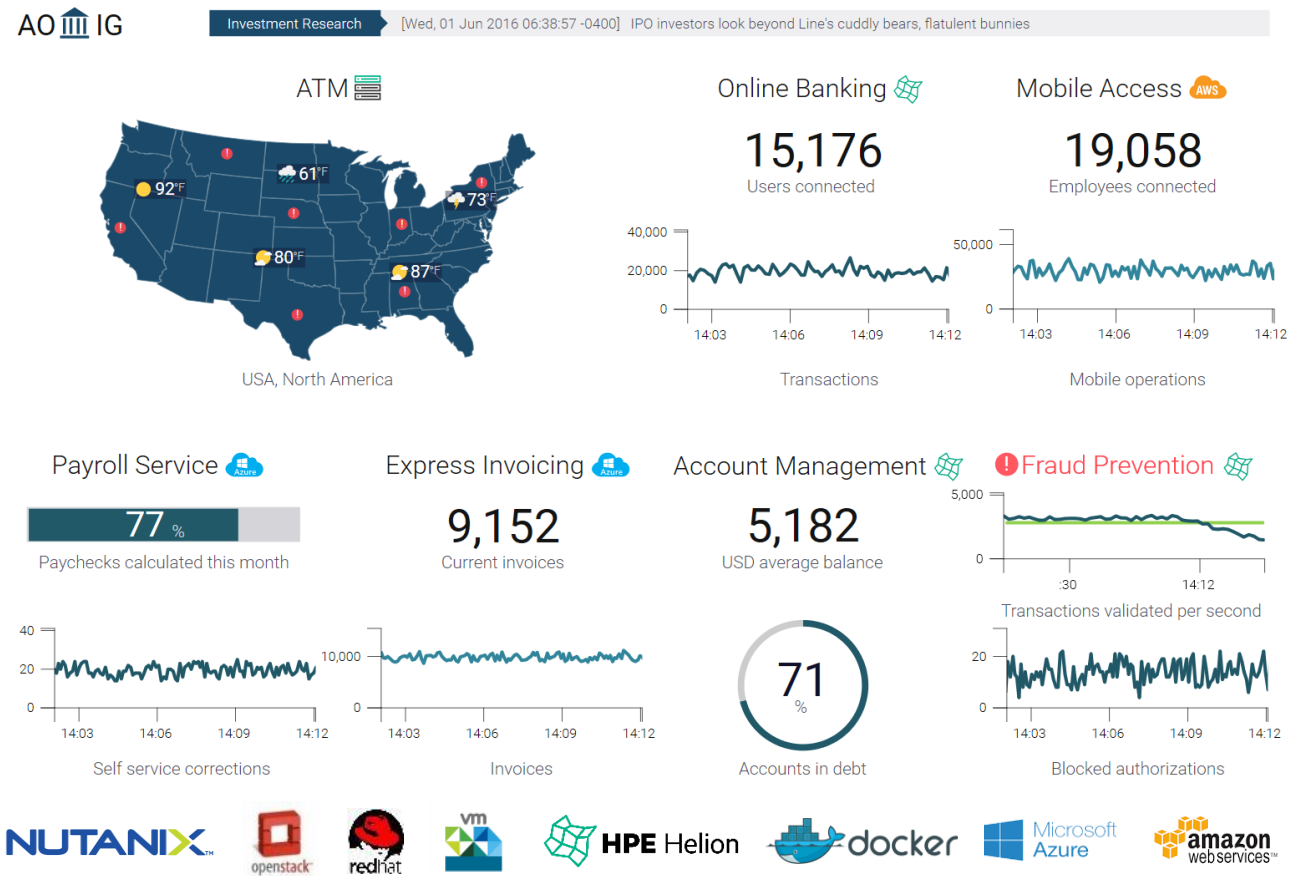
Single view from metal to cloud workloads

Automate monitoring¹,
discovery & remediation²

Coverage from hyper-converged
infrastructure to public cloud

Metal to App visibility for your
container infrastructure³

Ops Bridge available on Docker &
AWS Market place with BYOL



- 1) Drive Monitoring parameters from std cloud provisioning platforms
- 2) Built in actions for std cloud stacks (Azure, Docker, ...)
- 3) Mongo DB & SQL Lite in Container discovery

Cloud ready Autonomous Analytics to drive Operations Bridge

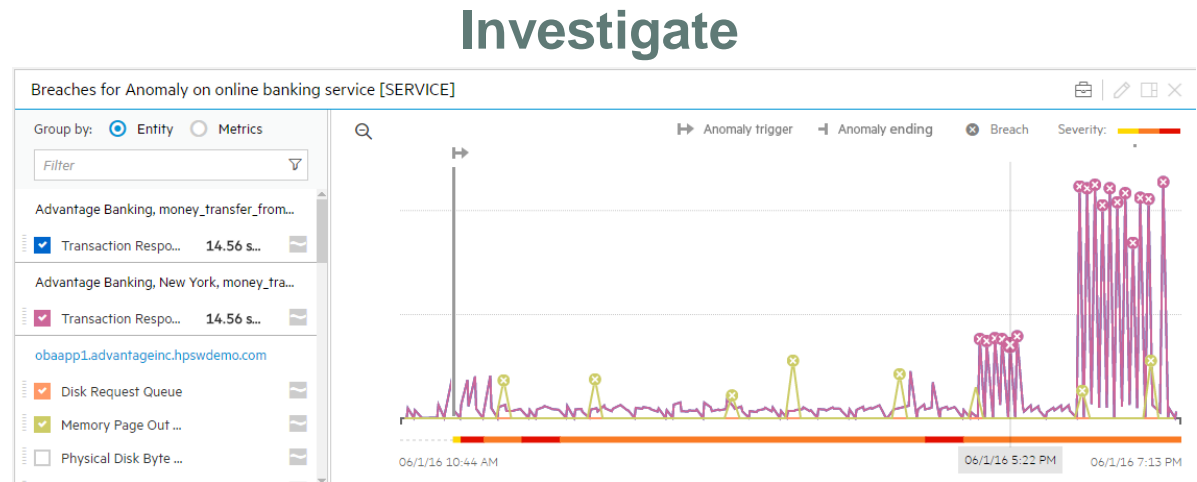
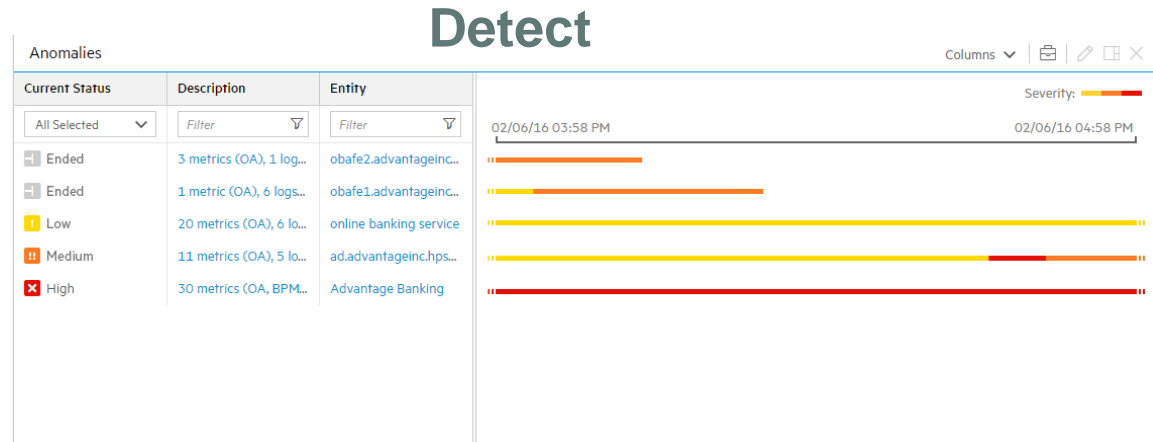
Config free anomaly detection for your biz service

Anomaly detected on all logs or metrics added to the system

Anomaly inspection directly opened from the anomaly event

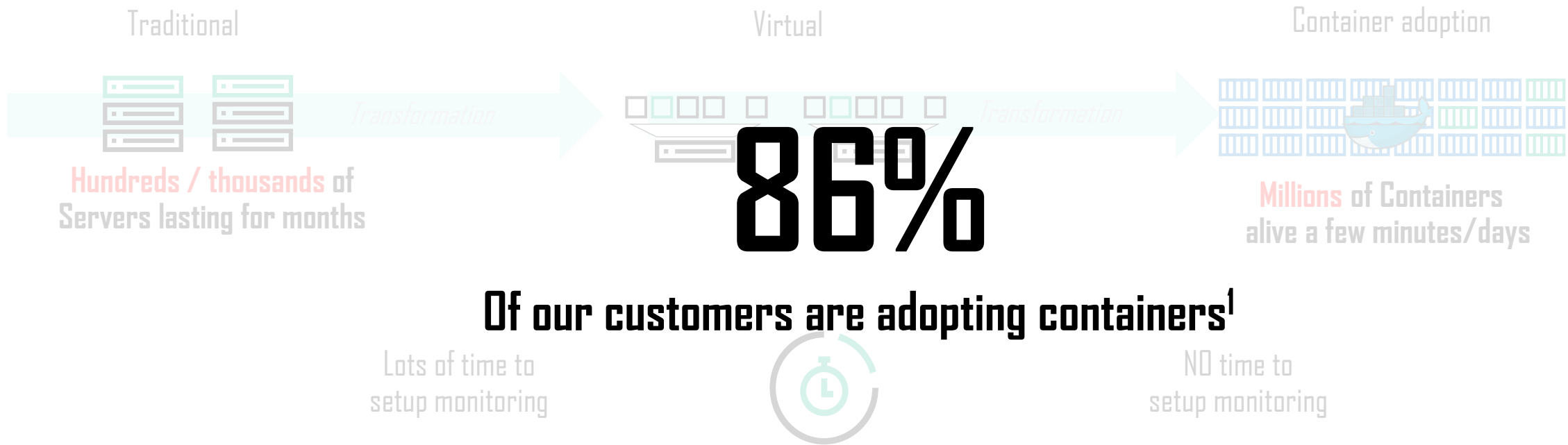
Preventive actions driven through OpsBridge Automation

Mapped to impacted biz services automatically



What's new with Operations Bridge – The container story

Business risk increased through lack of monitored infrastructure



Of our customers are adopting containers¹

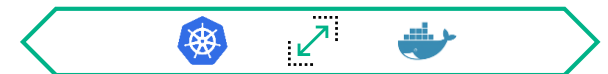
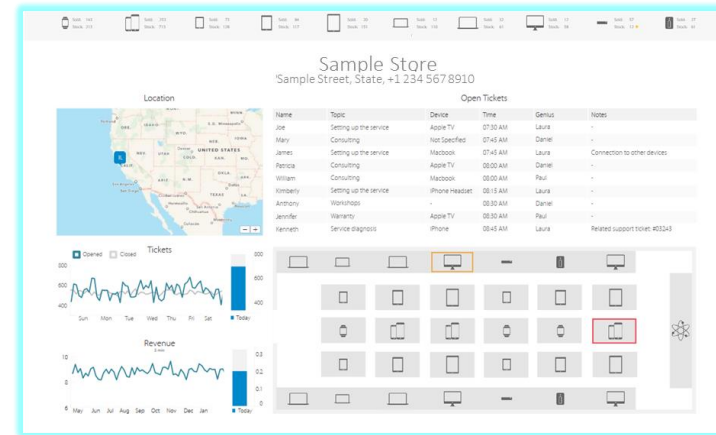
Operations Bridge scales to suit

Auto-scale with the cloud

Auto-scale dashboards (biz & perf) based on usage

Distribute configuration management to scale number of nodes configured

Parallelize event processing to scale event throughput with the cloud



Intuitive HTML-5 administration

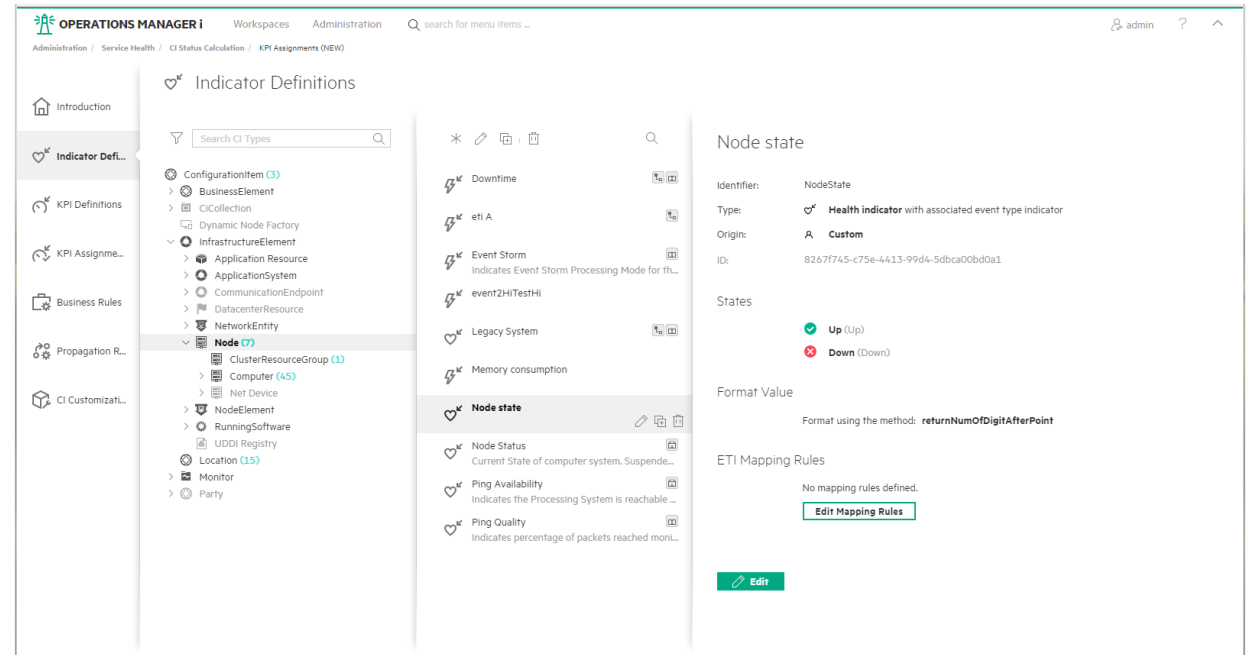
Java Applet free Interfaces

One Click navigation

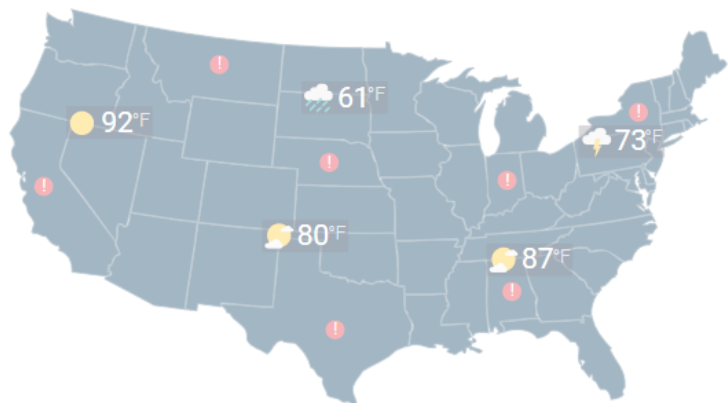
Auto-expand config & menu searches

Intuitive navigation using i.e. drag and drop concepts

Extending Browser support to Chrome for OpsB Premium¹



ATM

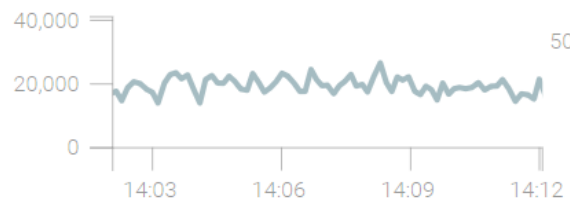


USA, North America

Online Banking

15,176

Users connected

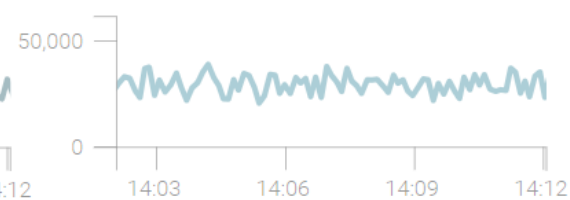


Transactions

Mobile Access

19,058

Employees connected



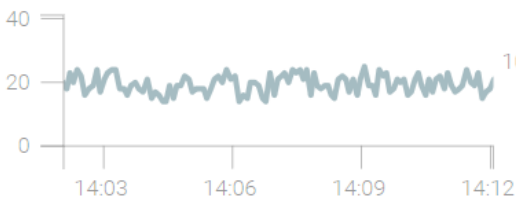
Mobile operations

DEMO

Payroll Service

77 %

Paychecks calculated this month

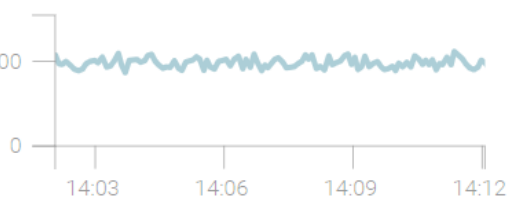


Self service corrections

Express Invoicing

9,152

Current invoices

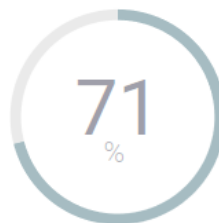


Invoices

Account Management

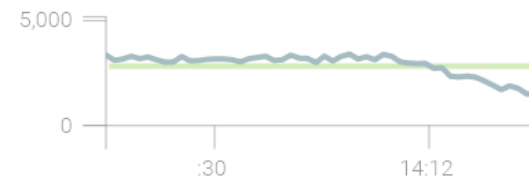
5,182

USD average balance

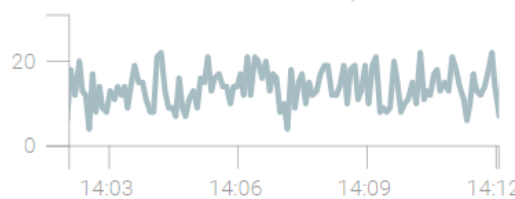


Accounts in debt

Fraud Prevention



Transactions validated per second



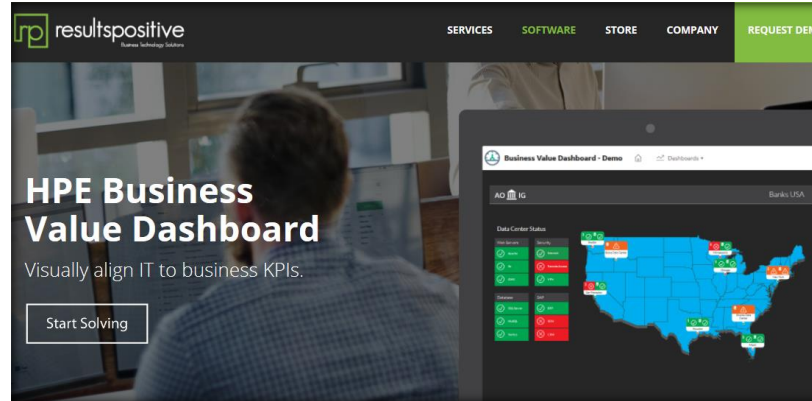
Blocked authorizations

Operations Bridge – Extending Business Value Dashboard Ecosystem

Adding SaaS & HelpDesk integrations via Partners

SaaS - Results Positive

Standalone SaaS offering via Partner
Provide Design & Implementation service



BVD SaaS Packages

Looking for real time business analytics but don't know how or where to start? Get up and running with our new BVD SaaS Packages. Choose the option that best fits your needs and get started today.

	BVD Ultimate	BVD Premium
Price	\$2499	\$1999
Features	<ul style="list-style-type: none"> 1 OOTB Dashboard 15 High Volume Feeds 15 Low Volume Feeds 	<ul style="list-style-type: none"> 1 OOTB Dashboard 5 High Volume Feeds 5 Low Volume Feeds
Buy Button	Buy Ultimate Package	Buy Premium Package

HelpDesk - AppLink

Extend connectors to BVD for CLIP use case
Add SNOW & Remedy to Live Network



CLIP for HPE Operations Bridge Business Value Dashboard (BVD)

General Status

Health Status of Connections

HPE BSM	Connected	↔	servicenow	FAILED
HPE OpsBridge	Connected	↔	bmc Remedy	Connected

Synchronization Status

Active	12929
Closed	9237
Pending	4
Failed	3

KPI Status

of incidents created in last 5 min: [Line chart showing a peak at 4:00 PM]

HP OpsBridge Event Backlog: [Line chart showing a rising trend from 3:45 PM to 4:30 PM]

Total # of incidents: 22173
Last Incident Creation: 2016-10-13 15:51:06.0
Oldest Active Incident: 2015-05-15 15:21:09.0
Oldest Incident: 2015-05-15 15:21:09.0

Last Update: 2016-10-13 16:42:00.0

CLIP for HPE Operations Bridge Business Value Dashboard (BVD)

Operational View - Daily

Number of Transactions (Last 24 h per 5 minute Interval)	1661	Performance of Transactions (msecs) (Last 24 h per 5 minute Interval)	3810
# of Incident Creations	1661	Average Creation Time Last 24 hours	3810
# of Event Updates from HPE	1236	Minimum Creation Time Last 24 hours	1465
# of Incident Updates from ServiceNow	4164	Maximum Creation Time Last 24 hours	31309

Extend Ops Bridge Ultimate content in BVD

Aggregate your capacity and utilization numbers across different virtual server farms

Summary view of multiple datacenters

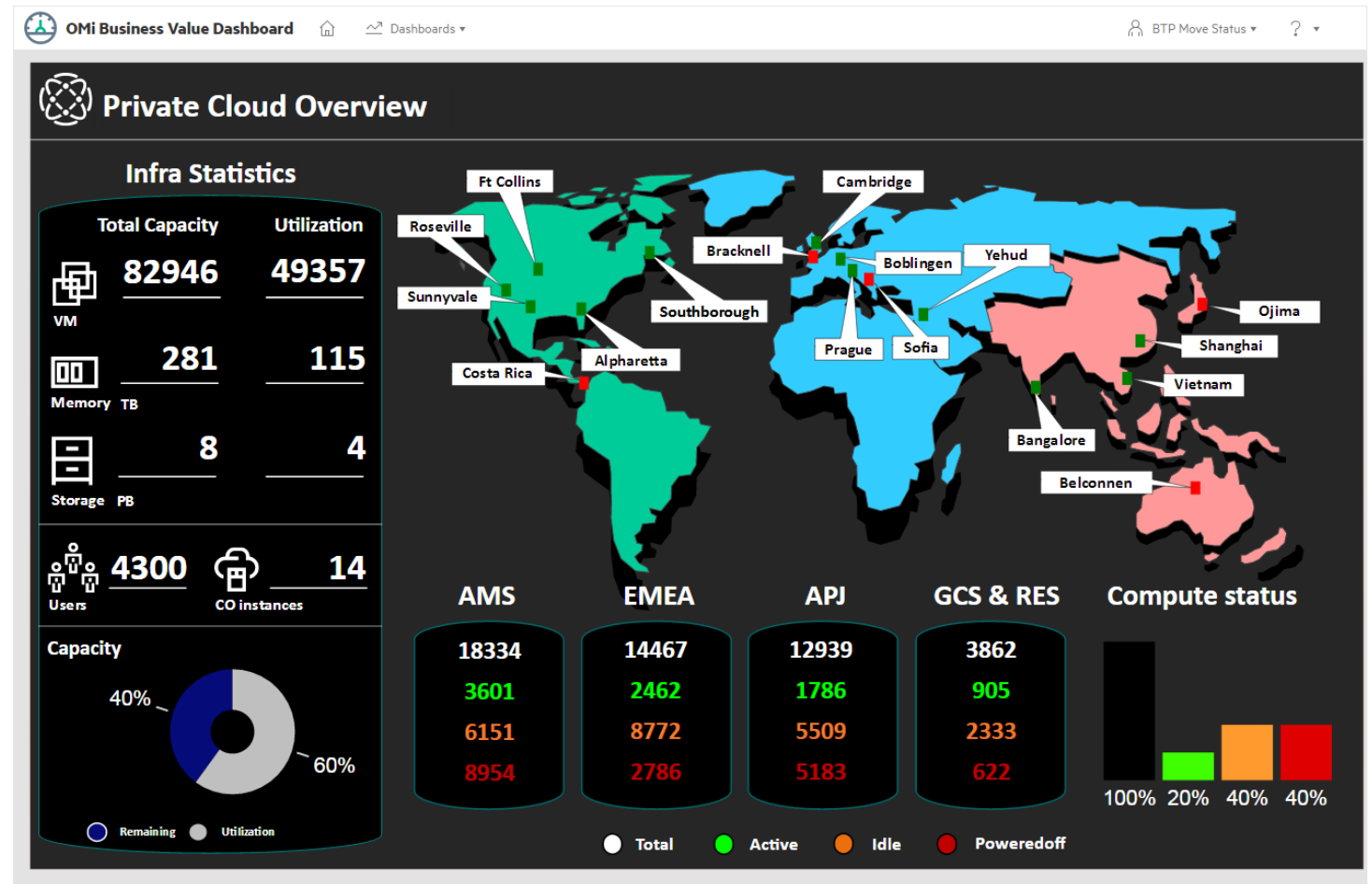
- Total capacity, utilization, capacity usage
- remaining capacity trend

Plan and avoid outage, reduce capex

- Establish level of wastage (idle, 'off' VMs),
- Get details for compute (CPU, memory), storage

Drill-down to instance level

- View data at a single instance level
- Customize as regional, functional, test/dev, ...



Example BVD dashboard used by IT to manage 50000+ VMs

Managing the Internet of Things with Operations Bridge

Sense, Analyze and Adapt your IoT environment

Sense IT & non IT data

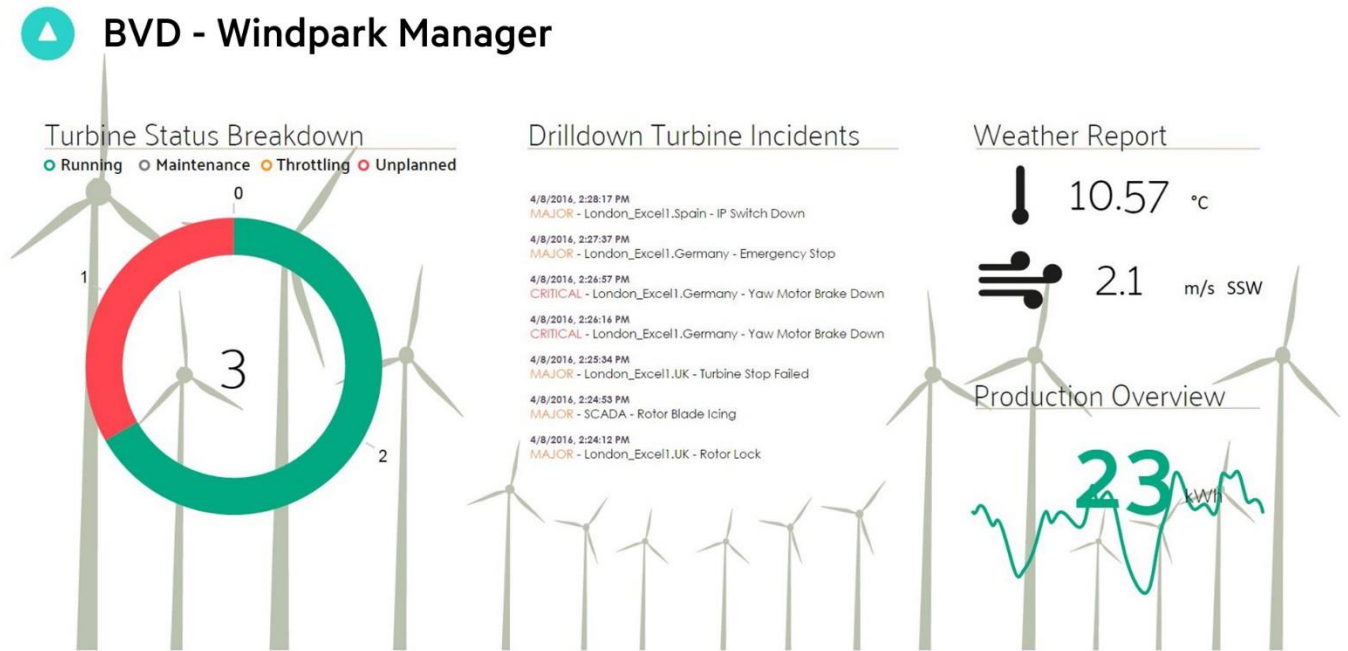
- Support industry standards APIs (OPC UA)
- Out of the box vertical specific content (Wind)

Analyze data in real time

- Correlate from different data sources
- Custom business specific dashboards

Adapt your devices securely

- Securely control devices centrally



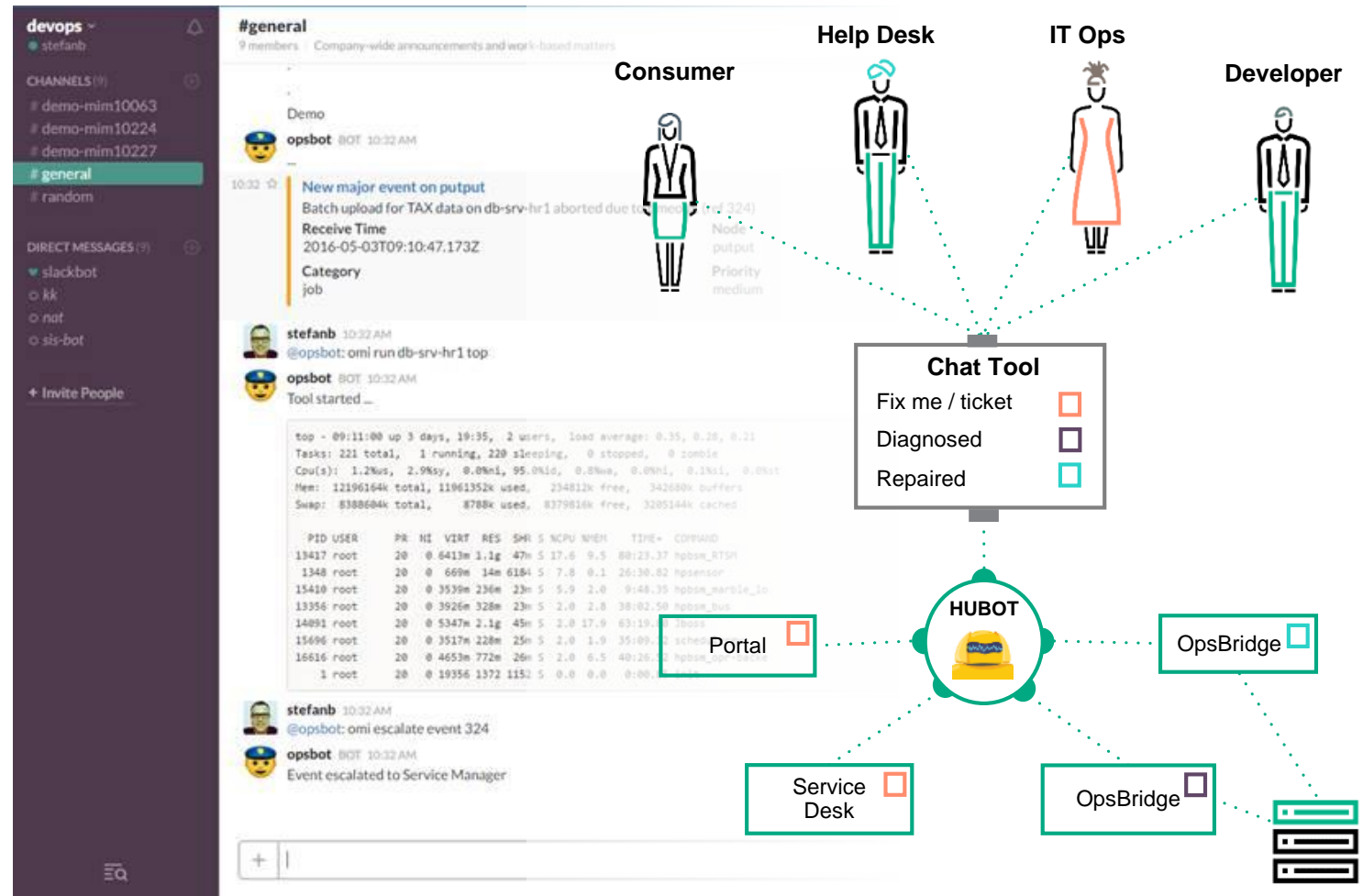
Adopting new concepts with Operations Bridge

Next Gen Closed Loop Incident Process – Chat Ops

Collaborate with SMEs, teams and systems

Preserve as a knowledge base & future analytics

Utilize OpsB bots to get information from the systems



Optimize your Cloud infrastructure

Cloud integration for service health monitoring

Monitoring health of provisioned services

- Health details for VMs in your cloud
- Aggregates health of VMs for service health (worst-child rule only)
- Enhanced CO view: VM summary details

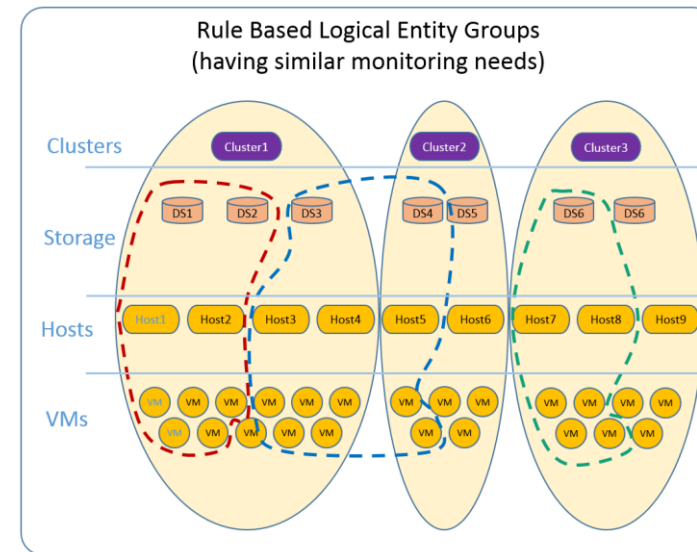
The image shows two screenshots. The left screenshot, titled "Service Topologies with Service health", displays a hierarchical view of a "Payment Gateway" service. It includes a "Topology Summary" table with columns for "Infrastructure Service", "Server", "Server Group", and "Service Composite". Below this is a detailed topology diagram showing the relationships between various components. The right screenshot, titled "HPE Cloud Optimizer", shows the "VM Summary" page for a VM named "CSA67VM23aIf5e". It includes a "Capacity & Sizing" table with columns for "Configured", "Recommended", and "Remarks".

Property	Configured	Recommended	Remarks
Logical CPUs	1	1	CPU: The Virtual Machine CSA67VM23aIf5e is right sized. No configuration change required.
Memory Configuration (GB)	1	1	Memory: The Virtual Machine CSA67VM23aIf5e is right sized. No configuration change required.
Memory Reservation (GB)	0	0	
CPU Reservation (GHz)	0	0	

Drill-down to enhanced VM summary view page for detailed information on VM health

Monitoring, threshold customization

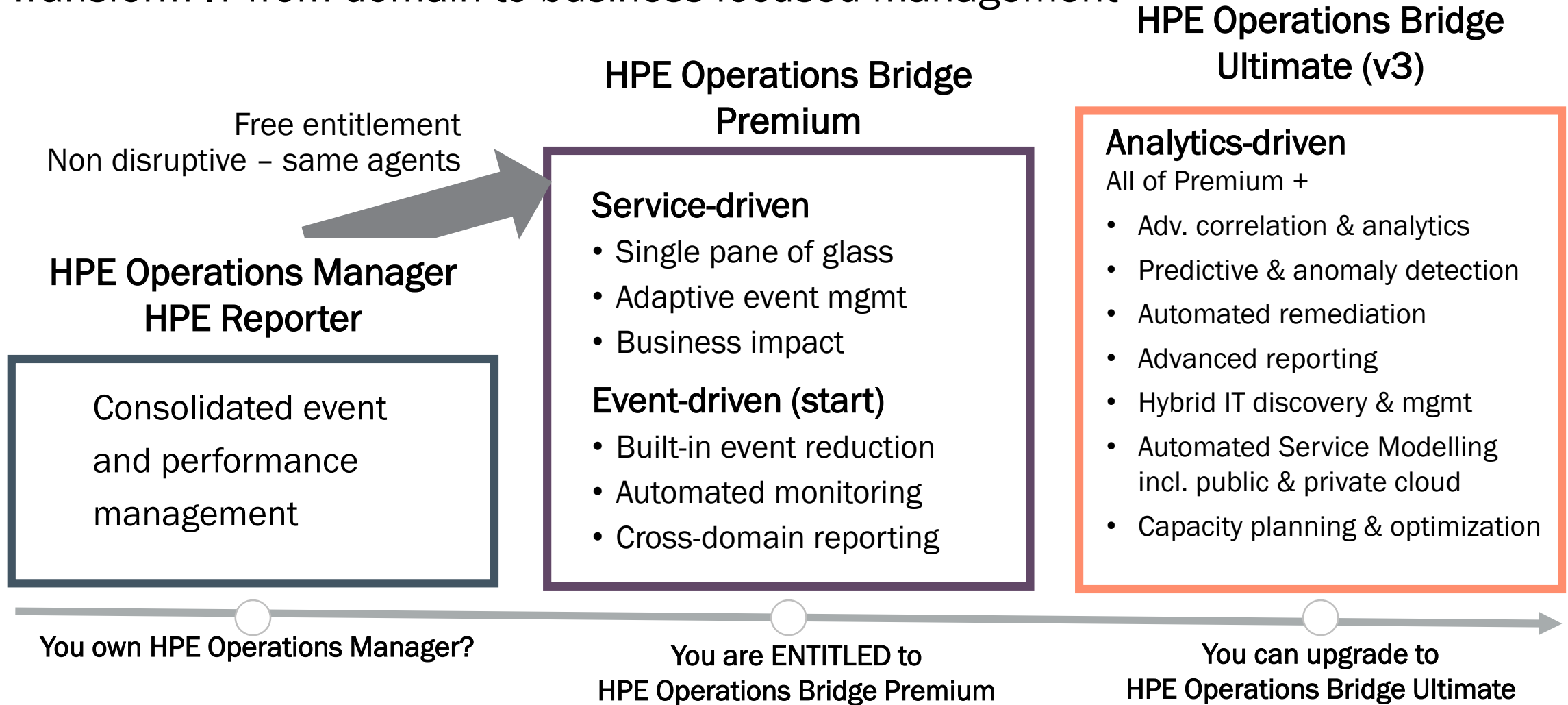
- Guest disk space usage alerts
- KVM hypervisor – data collection over TLS
- Grouping of CIs, custom thresholds per group



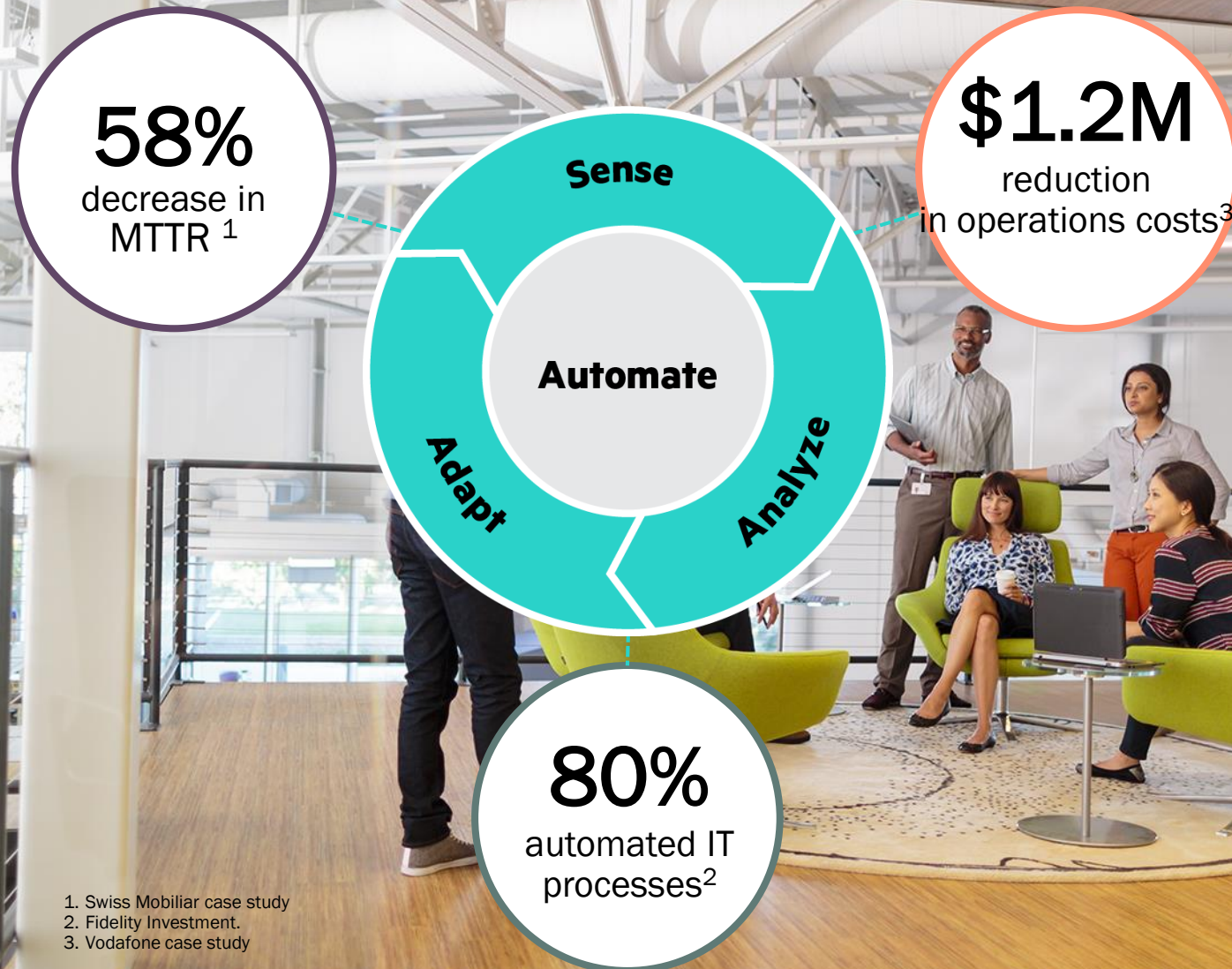
Alert customization

Using Operations Manager – Evolve now

Transform IT from domain to business-focused management



Customer measured benefits



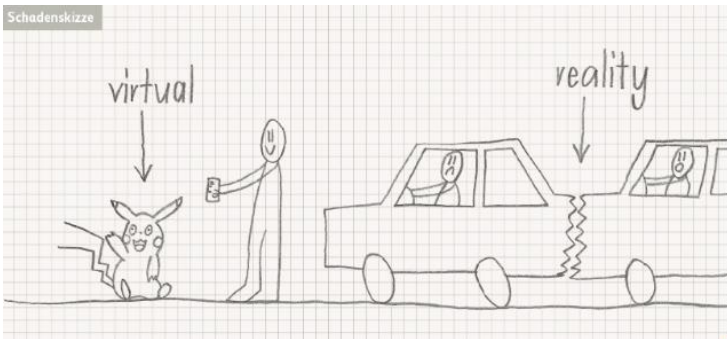
1. Swiss Mobiliar case study
2. Fidelity Investment.
3. Vodafone case study

Customer realized outcomes

33% Incident reduction

MTTR reduced by **58%**

Swiss Mobiliar
Insurance & Pensions



50% More work with the same staff

90% Reduction in actionable events



118% efficiency Improvement In 5 months

“The combination of OpsBridge, BVD and Appulse is unique on the market”

Luke Bradley



Engage with us

Videos & Demos



BVD Live DEMO

Customer Use Cases



Die Mobiliar Transforms Operations Efficiency with HPE

Daniel Boschbach of Die Mobiliar explains how the Swiss insurer uses HPE Operations Bridge to optimize user satisfaction by lowering mean time to repair by 50%, reducing user-generated tickets, and eliminating incident discrepancies.

(2:39 Minutes)



KMD Sees 90% Reduction in Daily Events

KMD wanted to optimize business services. It now uses event correlation and management with single-pane dashboard reporting and has achieved reductions of 90% in daily events, 25% in trouble tickets, and 25% in technicians required for incident resolution.

(3:00 Minutes)



Vancity Credit Union: An Always-on Customer Experience

Vancity, the largest credit union in Canada, shortened resolution time and now ensures that its systems are always on for its customers by implementing a single-pane-of-glass monitoring automation solution.

(3:15 Minutes)

(PDF 585 KB)

[Read More](#)

Web Presence





Hewlett Packard
Enterprise

For more information, go to:

www.hpe.com/software/opsbridge

Thank you

ianb@hpe.com

Post Discover Summit 2017



Join HPE and Vivit for a
Post Discover Summit
2017

Nine Webinars in 3 days
focusing on ADM/ITOM

<http://www.vivit-worldwide.org/default.asp?page=LondonSummit2017>

YOUR INDEPENDENT HPE SOFTWARE USER COMMUNITY



Thank You

- Complete the short survey and opt-in for more information from Hewlett Packard Enterprise.

www.hpe.com

www.vivit-worldwide.org

YOUR INDEPENDENT HPE SOFTWARE USER COMMUNITY





Thank You

vivit-worldwide.org

